



වයඹ පළාත් අධ්‍යාපන දෙපාර්තමේන්තුව Provincial Department of Education - NWP වයඹ පළාත් අධ්‍යාපන දෙපාර්තමේන්තුව Provincial Department of Education - NWP  
වයඹ පළාත් අධ්‍යාපන දෙපාර්තමේන්තුව Provincial Department of Education - NWP වයඹ පළාත් අධ්‍යාපන දෙපාර්තමේන්තුව Provincial Department of Education - NWP  
වයඹ පළාත් අධ්‍යාපන දෙපාර්තමේන්තුව Provincial Department of Education - NWP වයඹ පළාත් අධ්‍යාපන දෙපාර්තමේන්තුව Provincial Department of Education - NWP  
වයඹ පළාත් අධ්‍යාපන දෙපාර්තමේන්තුව Provincial Department of Education - NWP වයඹ පළාත් අධ්‍යාපන දෙපාර්තමේන්තුව Provincial Department of Education - NWP  
වයඹ පළාත් අධ්‍යාපන දෙපාර්තමේන්තුව Provincial Department of Education - NWP වයඹ පළාත් අධ්‍යාපන දෙපාර්තමේන්තුව Provincial Department of Education - NWP  
වයඹ පළාත් අධ්‍යාපන දෙපාර්තමේන්තුව Provincial Department of Education - NWP වයඹ පළාත් අධ්‍යාපන දෙපාර්තමේන්තුව Provincial Department of Education - NWP  
වයඹ පළාත් අධ්‍යාපන දෙපාර්තමේන්තුව Provincial Department of Education - NWP වයඹ පළාත් අධ්‍යාපන දෙපාර්තමේන්තුව Provincial Department of Education - NWP  
වයඹ පළාත් අධ්‍යාපන දෙපාර්තමේන්තුව Provincial Department of Education - NWP වයඹ පළාත් අධ්‍යාපන දෙපාර්තමේන්තුව Provincial Department of Education - NWP

22 E I

Provincial Department of Education - NWP

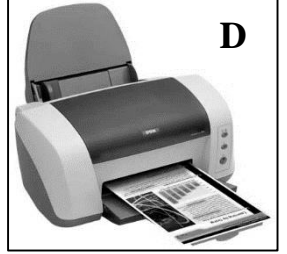
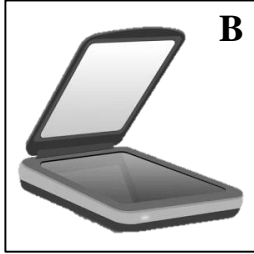
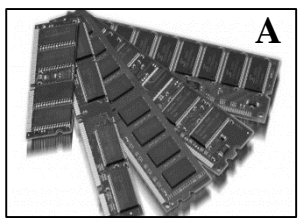
Second Term Test - Grade 13 - 2020

Index No. .... Geography I Three Hours

- This paper consists of three parts
- Part I consists of 40 Questions and write answers them in this paper
- Answer both questions in part II. Part III consists of four questions and write answers only for two questions.
- A part of metric map of Sri Lanka and a World map are provided.

Part - I

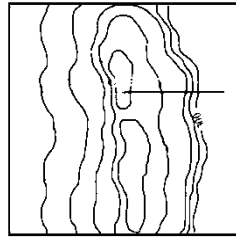
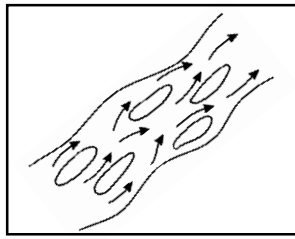
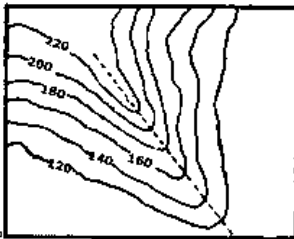
- Write the correct number of correct choice in the brackets.
- 01). How many square kilometers are used in representing a reservoir of 8km<sup>2</sup> of real land in a topographic map?  
 i. 2 cm<sup>2</sup>                      ii. 4 cm<sup>2</sup>                      iii. 8 cm<sup>2</sup>                      iv. 16 cm<sup>2</sup>                      v. 32 cm<sup>2</sup>                      (.....)
- 02). Select the answer that contain measurements of central tendency.  
 i. Median, range, mean    ii. Median, mode, mean deviation  
 iii. Median, mode, mean    iv. Standard deviation, mode, mean  
 v. Standard deviation, mean deviation, interquartile range    (.....)
- 03). Which answer shows respectively an input device and an output device which belong to Geographical Information System.



- i. A and B    ii. B and C    iii. A and D  
 iv. B and D    v. D and B    (.....)

- 04). Select the map numbers which were combined to make one sheet in 1:50 000 topographic map of Sri Lanka.  
 i. 57 - 58                      ii. 02 - 03                      iii. 45 - 46                      iv. 19 - 20                      v. 90 - 91                      (.....)
- 05). Select the name given for the satellites which are located permanently at specific places in the sky and revolving around the earth at a time corresponding to the earth's rotation time.  
 i. Geosynchronous satellites                      ii. Polar orbit satellites  
 iii. Climatic satellites                      iv. Geostationary Satellites  
 v. Communication satellites                      (.....)
- 06). Who is the owner of Global Positioning System (GPS) Which was originally limited to use for military and Security purposes and later, civilian use was allowed with free of charge ?  
 i. Security department of China                      ii. Security department of India  
 iii. Security department of Russia                      iv. Security department of Japan  
 v. Security department to USA                      (.....)

07). Which answer name following topographical features correctly and respectively.



- i. Spur, braided river, gap                      ii. valley, braided river, convex slope  
 iii. Spur, braided river, concave slope                      iv. valley, braided river, concave slope  
 v. spur, braided river, Convex slope                      (.....)

08). To which of the following data types, the data showing height and weight of the students of grade 10 belong.  
 i. Continuous data                      ii. nominal data                      iii. ratio data  
 iv. discrete data                      v. grouped data                      (.....)

09). When vertical aerial photos are taken the optical axis of the camera is perpendicular to the earth's surface its disadvantage is,  
 i. representation of three dimensional features clearly.                      ii. Inclusion of large amount of information.  
 iii. difficulty in analyzing information                      iv. low information obtained.  
 v. not representing three dimensional features clearly                      (.....)

10). Out of the following monitoring stations of Global Positioning System, two centres located in Pacific oceans are.  
 A - Colorado    B - Hawaii    C - Ascension    D - Diego Garcia    E - Kwajalein  
 i. A, C                      ii. B, D                      iii. C, E                      iv. B, E                      vi. D, E                      (.....)

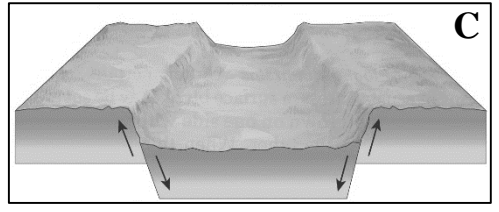
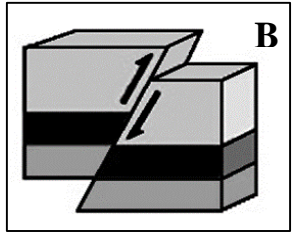
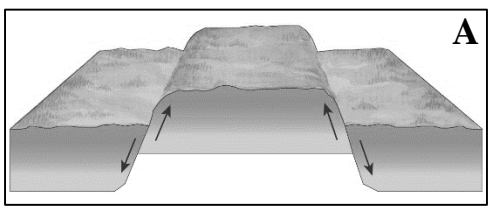
11). Select the answer that contain only landforms formed in arid areas by water  
 i. mushroom rock, zeugen, yardangs                      ii. mushroom rock, zeugen, yardangs,  
 iii. yardangs, playa lakes, pediment                      iv. bahada, playa lakes, pediment  
 v. Bahada, brooks, Mesa                      (.....)

- 12). What is mainly happening in east pacific ocean due to El - Nino phenomena
- freezing ocean water abnormally
  - changing atmospheric pressure and wind pattern due to increasing temperature in ocean water
  - increasing fish population due to increasing temperature in ocean water.
  - Changing atmospheric pressure and wind pattern due to decreasing temperature in ocean water
  - difficulty in engaging fishing due to decreasing temperature in ocean water (.....)

- 13). Select the soil type in which following features are seen.
- high fertility
  - found in mountainous, valley areas.
  - Suitable for cocoa and banana cultivation.
- Reddish brown soil
  - alluvial soil
  - reddish brown latasols.
  - grumusols soil
  - red yellow podsolic soil (.....)

- 14). The topographical feature associated with Alpine glacier which contribute for the formation of is waterfalls
- Cirque
  - drumlin
  - Arete
  - Esker
  - hanging valley (.....)

15). Which answer shows respectively rift valley, normal fault and horst formed by tensional movement,



- A, C, B
- B, C, A
- A, B, C
- C, B, A
- B, A, C (.....)

- 16). rainfall pattern which occur due to the oscillation of ITCZ to the south of Sri Lanka.
- North east monsoon
  - Cyclone
  - South - west monsoon
  - First inter monsoon
  - Second inter monsoon (.....)

- 17). Out of the water deposited in earth interior, water which deposited among sedimentary layers is called,
- magmatic water
  - Surface water
  - meteoric water
  - connate water
  - atmospheric water (.....)

- 18). Select the answer that contain only methods of transportation.
- Solution, Salation, traction
  - Saltation, Corrosion, Solution
  - traction, Suspension, Solution
  - suspension, Saltation traction
  - above all (.....)

- 19). Forest distributed in a zone between latitudes of 50° - 60° in both hemisphere is,
- Tropical forest
  - Mediterranean forest
  - temperate forest
  - tundra forest
  - Tropical savanna forest (.....)

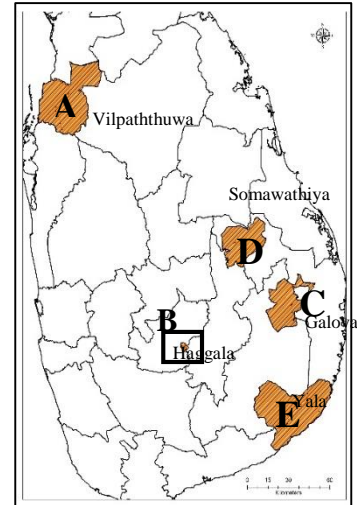
- 20). Atmosphere is divided into four distinctive layers based on the
- Changes in Pressure in atmosphere

- ii. Changes in vertical temperature in atmosphere
- iii. Changes in density in atmosphere
- iv. altitude in atmosphere
- v. Changes in pressure and temperature in atmosphere. (.....)

- 21). Various landforms are produced with the processes of rock disintegration, oxidation, corbonation, and hydration and also by solution and deposition
- i. by surface water
  - ii. by atmospheric water
  - iii. by ground water circulation
  - iv. by ocean waves
  - v. by running water (.....)

- 22). Among wildlife reserve, a national park and strict nature reserve are shown by the letters respectively,

- i. A, E
- ii. D, C
- iii. B, C
- iv. D, B
- v. B, E (.....)



- 23). Epicentres of more than 70 per cent of the world's earthquakes are located
- i. Himalaya region
  - ii. Circum - pacific region
  - iii. Mid Atlantic oceanic ridge region
  - iv. African rift valley zone
  - v. Mediterranean zone (.....)

- 24). out of rivers in Sri Lanka, the river basin which receives highest rainfall (annual precipitation 3605 mm) is
- i. Mahaweli river
  - ii. Malwathu oya
  - iii. Walawe ganga
  - iv. Kelani ganga
  - v. Kalu ganga (.....)

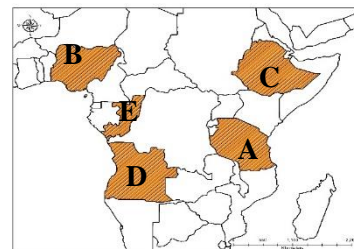
- 25). The breaking waves armed with sand, stones and rocks hit the shore hard is known as
- i. swash
  - ii. drift
  - iii. backwash
  - iv. four - stroke
  - v. off shore drift (.....)

- 26). The answer that shows agro - based industries,
- i. Tyre, electronic equipment, spices, furniture
  - ii. Tube, sugar, Tea, cotton
  - iii. Tube, Sugar, Tea, iron and steel
  - iv. Sugar, ship, electronic equipment, tyre
  - v. Tyre, Tube, motor cycle, ship (.....)

- 27). The letters which show following African countries which are expected to be in the list of 10 most populated countries in the world by 2050

Nigeria - Ithiopia - Republic of congo

- i. B, C, D
- ii. A, B, E
- iii. A, C, E
- iv. B, C, E
- v. A, B, C (.....)



- 28). Select the answer that consists of subject which belong to physical geography
- development geography, economic geography, urban geography
  - climatology, economic geography, historical geography
  - bio - geography, climatology, coastal geography
  - geomorphology, economic geography, archeology
  - economic geography, environmental geography, urban geography (.....)

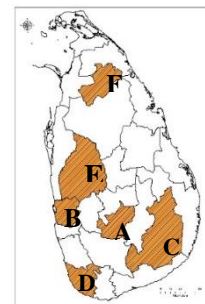
- 29). - Migratory fishing industry  
 - Shifting cultivation  
 - Seasonal migration in search of food  
 - Seasonal changes in climate  
 Type of Settlement formed due to above reasons is,
- Youth settlements
  - fisheries villages
  - NADZA settlement
  - Urban settlement
  - Temporary and semi-permanent settlement (.....)

- 30). Select the answer that contain only main factors which affect for the gradual growth of urbanization process in Sri Lanka.
- Rural - urban migration
  - Natural increase in urban population
  - Changes in administrative boundaries
- Only A
  - Only B
  - A and C
  - B and C
  - A, B, and C (.....)

- 31). The answer that contains two petroleum importing countries though they are the major petroleum producing countries in the world.
- USA and Japan
  - India and Russia
  - Canada and China
  - China and Japan
  - USA and Canada (.....)

- 32). World plan for Food and Agricultural Development which was initiated in 1963 is known at present as
- Gene technology
  - green revolution
  - hybridization
  - Organic agriculture
  - Crossing of seeds (.....)

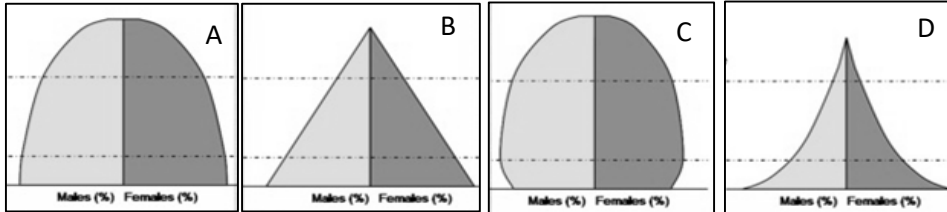
- 33). The answer that contain only districts with more than one million in the map of Sri Lanka is,
- D, E, F
  - A, B, D
  - A, C, E
  - B, D, E
  - B, C, D (.....)



- 34). Select the answer that consists only settlements which can be categorized according to the nature of the functions.
- Linear, scattered, junction
  - rural, urban, semi urban
  - rural, urban, rural
  - rural, urban, plantation
  - rural, dispersed, plantation (.....)

- 35). A field on which great attention was not paid in Sri Lanka under the agricultural technology
- i. greenhut
  - ii. irrigation technology
  - iii. Use of modern machineries
  - iv. gene technology
  - v. organic farming
- (.....)
- 36). An Asian and European country which had more than 95% of level of World urbanization by 2014 is are,
- i. Qatar and France
  - ii. Uruguay and India
  - iii. Taiwan and Germany
  - iv. Singapore and Belgium
  - v. Japan and Norway
- (.....)

37). When following population pyramid are arranged in order,



- i. DBAC
  - ii. BDAC
  - iii. ABCD
  - iv. DCBA
  - v. DABC
- (.....)
- 38). 98% of world iron are production is used for production of,
- i. iron and steel
  - ii. motor vehicle
  - iii. ship building
  - iv. electronic equipment
  - v. aircraft manufacturing
- (.....)
- 39). There are occasions that the reduction or removal of import duties in certain periods have affected the local agro - products / farmer. Two types of crops which affected adversely by above method.
- i. big onion and red onion
  - ii. potato and dhal
  - iii. potato and big onion
  - iv. chille and beans
  - v. dhal and potato
- 40). A major challenge faced by many international organizations like the United Nations and World bank is,
- i. displacement
  - ii. poverty
  - iii. disability
  - iv. food security
  - v. gender issues
- (.....)



වයඹ පළාත් අධ්‍යාපන දෙපාර්තමේන්තුව Provincial Department of Education - NWP  
වයඹ පළාත් අධ්‍යාපන දෙපාර්තමේන්තුව Provincial Department of Education - NWP  
වයඹ පළාත් අධ්‍යාපන දෙපාර්තමේන්තුව Provincial Department of Education - NWP  
වයඹ පළාත් අධ්‍යාපන දෙපාර්තමේන්තුව Provincial Department of Education - NWP  
වයඹ පළාත් අධ්‍යාපන දෙපාර්තමේන්තුව Provincial Department of Education - NWP  
වයඹ පළාත් අධ්‍යාපන දෙපාර්තමේන්තුව Provincial Department of Education - NWP  
වයඹ පළාත් අධ්‍යාපන දෙපාර්තමේන්තුව Provincial Department of Education - NWP  
වයඹ පළාත් අධ්‍යාපන දෙපාර්තමේන්තුව Provincial Department of Education - NWP  
වයඹ පළාත් අධ්‍යාපන දෙපාර්තමේන්තුව Provincial Department of Education - NWP  
වයඹ පළාත් අධ්‍යාපන දෙපාර්තමේන්තුව Provincial Department of Education - NWP

වයඹ පළාත් අධ්‍යාපන දෙපාර්තමේන්තුව  
Provincial Department of Education - NWP

22 E I

Second Term Test - Grade 13 - 2020

Index No. .... Geography I

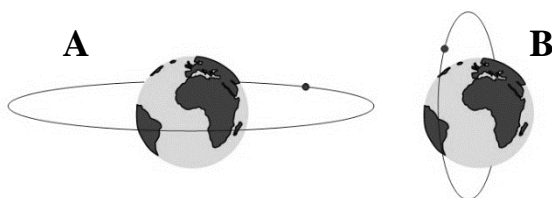
Prat - II

Answer all the questions.

- 1). Write answers for the following questions based the part of 1:50 000 topographic map published by the survey department of Sri Lanka. Contour interval is 20 m
  - i. Name 2 public service providing centres seen in the square no. 01 (2 marks)
  - ii. Name 2 drainage features seen in the square no. 2 (2 marks)
  - iii. Name the administrative boundaries that extend along the river shown by no.3 (2 marks)
  - iv. What is shown in the square no. 4 (1 marks)
  - v. a). What is the main land utilization pattern seen in the mapped area (1 marks)  
b). Name 2 other land utilization patterns seen in the area other than the crop you mentioned above (2 marks)
  - vi. Calculate and state in kilometers the distance of the road BO45 marked by no. 5 (2 marks)
  - vii. Explain how relief and drainage have affected for the land utilization pattern in the mapped area (4 marks)
  - viii. State your views about how transportation system has affected for the development of the area. (4 marks)
  
- 02). Marks and name following things in the world map provided. Use standard colours and symbols.
  - i. Magalon strait
  - ii. Gayana highland
  - iii. Lake Tanganika
  - iv. Gulf warm currents
  - v. Perth city
  - vi. Baltic sea
  - vii. Alutien trench
  - viii. Canal which connect Red sea and Mediterranean sea
  - ix. The longest river in continent of Asia.
  - x. The Asiatic country which reported highest infectious people after Ohina.

### Part III

- 03). i. Define "data" (2 marks)  
 ii. Define grouped and ungrouped data separately. (3 marks)  
 iii. Describe how data is collected using a primary data collection method. (4 marks)  
 iv. Explain advantages and disadvantages of secondary data in geographical studies. (6 marks)
- 04). i. What is meant by Remote Sensing? (2 marks)  
 ii. Name following two types of satellites which can be identified according to the nature of their location and orbital path and describe one of them. (4 marks)  
 iii. Explain briefly about three types of platforms needed for Remote Sensing process (6 marks)



- iv. Describe with Examples the field in which Remote Sensing technology is used at present. (3 marks)
- 05). i. Name 3 measures of dispersion (3 marks)

- Data related to tea - land area which were re - cultivated from 2009 to 2018 in Sri Lanka are given below.

**Re-cultivated tea land (hectare)**

Year	Land area
2009	1218
2010	1683
2011	1851
2012	1832
2013	1748
2014	1293
2015	1476
2016	1060
2017	944
2018	1027

Source:- Socia - economic data 2019, Central bank Sri Lanka

- i. Calculate mean in re-cultivated land from 2009 - 2018 (2 marks)
- ii. Calculated mean deviation Using this equation  $\left(MD = \frac{\sum |x - \bar{x}|}{n}\right)$  (4 marks)
- iii. Represent these data in deviation bar graph. (6 marks)
- 06). i. Name two main types of formats which are used for the representation of data in Geographical Information System (2 marks)  
 ii. Describe with sketch diagrams how basic topology such as point, line and polygon are represented by data formats you mentioned above. (4 marks)  
 iii. Explain two uses of Geographic Information System. (4 marks)  
 iv. Name two field in which Geographic Information System is used and described one of them. (5 marks)





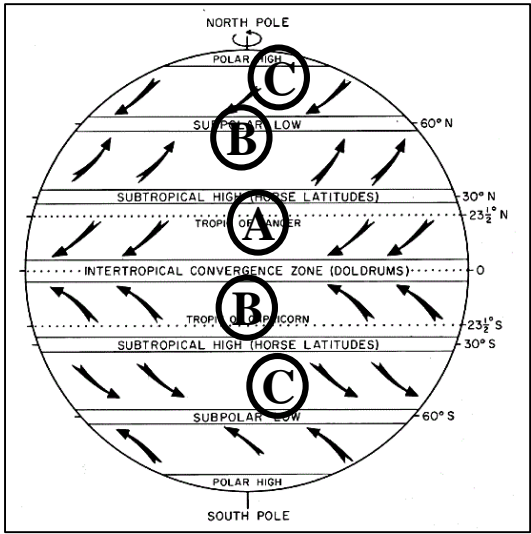
**Second Term Test - Grade 13 - 2020**

**Geography II** **Three Hours**

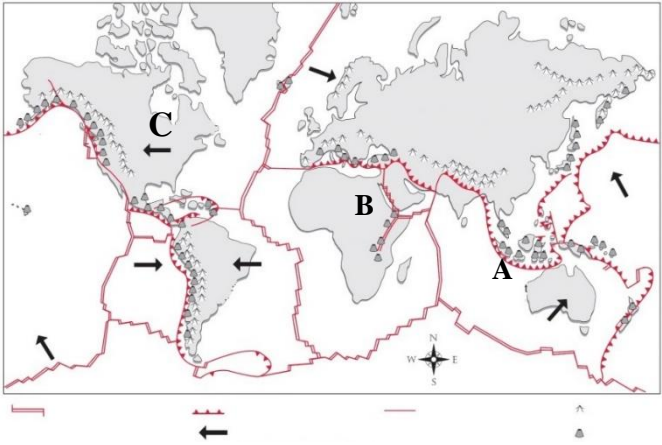
- **Selecting at least two questions form each parts write answers for five questions only.**

**Part - I - Physical Geography**

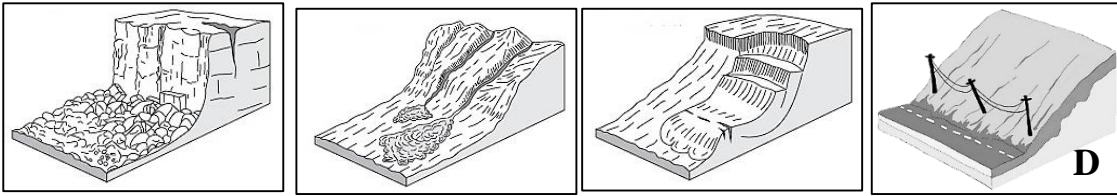
- 02) i) Name 3 main types of wind shown by the letters A, B and C in the following diagram which shows atmospheric wind circulation (3 marks)
- ii) Name sub types of Tropical Climate which belongs to koppen's Climatic classification and explain features of one type. (5 marks)
- iii) Explain with reference to three facts how variation in climate affect human activities. (6 marks)
- iv) Explain with exmples measures which have been taken by the government to minimize and to control releasing greenhouse gases in the field of transportation and energy in Sri Lanka. (6 marks)



- 02) i) Name 3 types of boundaries that can be identified in plate movement. (3 marks)
- ii) Name major plates shown by the letters A, B, C in the map and write 3 countries for each located on those plates. (6marks)
- iii) Draw diagram of 3 landforms formed by compressional movement and describe their formation process. (6 marks)
- iv) Name 3 effects of earthquake and describe one of them. (6 marks)



- 03) i) What is meant by a "mass movement" (3 marks)  
 ii.) Identify and name correctly the types of land slides shown as A, B, C and D below. (4 marks)



- ii) Name 3 probable areas of landslides and 3 predications of a landslide separately. (6 marks)  
 iv) Name 3 factors leading landslide and describe two of them. (7 marks)
- 04) i) Write the difference between a hazard and a disaster. (3 marks)  
 ii) a). Categorized and rewrite following natural disasters which occurred in the world recently in to three main group.  
 A. Bushfire associated with Amazon forest. (2019 November.)  
 B. Cyclone storm that affected Fiji Island.  
 C. Floods in East Africa.  
 D. Taal volcanic eruption in Philippines.  
 E. Desert grasshopper invasion if Africa and South Asia.  
 F. Earthquake that occured in PuertoRico. (3 marks)
- b). Name in order a disaster that occur frequently in wet and dry zone in Sri Lanka. (2 marks)
- iii) Name 3 reasons for the occurrence of thsunami disaster which affects only specific region in the World and explain one of them. (6 marks)  
 iv) Describe 3 human activities that intensify the natural disasters. (6 marks)

## Part - II - Human Geography

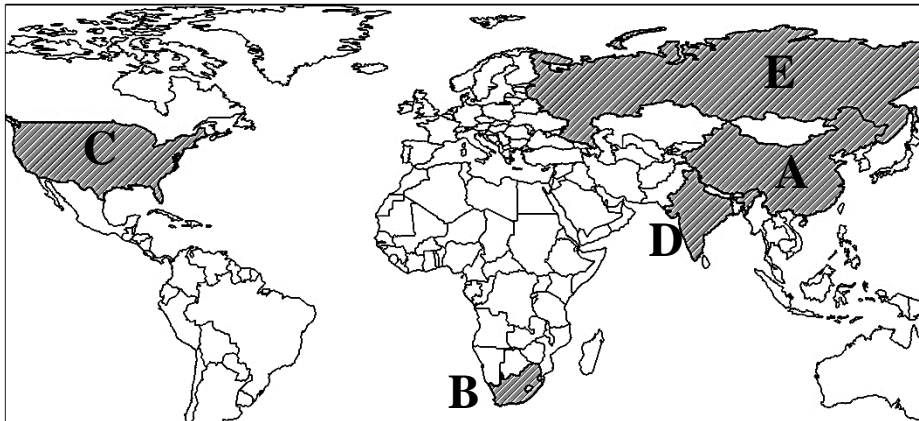
05)

### Population and forest density according to the provinces in Sri Lanka.

Province	Forest density (Km <sup>2</sup> )	Population density per 1 km <sup>2</sup>
Western province	195	1706
Central province	1402	493
Southern Province	932	490
Northern Province	3946	136
Eastern province	3030	183
North western province	1002	338
North central province	3326	140
Uva province	2000	164
Sabaragamuwa province	765	416

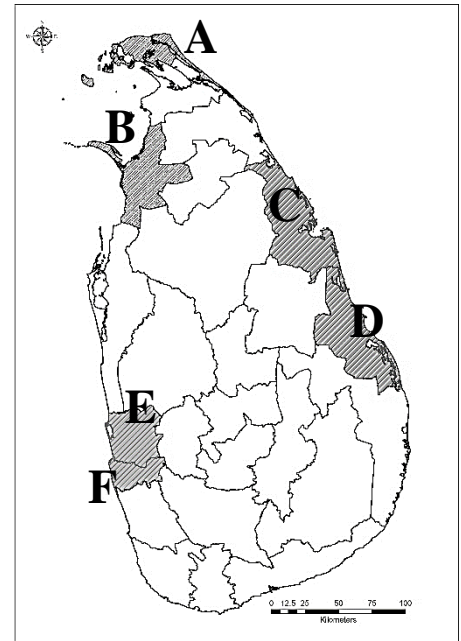
Source :- Socio - economic data, 2019 Central Bank of Sri Lanka.

- i) Name the province with highest and lowest population density relative to the distribution of forest. (2 marks)
  - ii) Explain factors which affect for low forest density in provinces where there is high density of population. (6 marks)
  - iii) Discuss factors which have influenced for Sri Lanka to reach higher value of Human Development Index than developed countries. (6 marks)
  - iv) Describe how changes which occur in sex ratio in Sri Lanka affect the country's socio - economic affairs. (6 marks)
- 06)
- i) Write what is meant by " extractive industry" (3 marks)
  - ii) Name 2 main methods by which mining industry is carried out and explain them briefly with examples. (6 marks)
  - iii) Name major Coal producing countries in the world shown by the letters in the map. (5 marks)



- iv) Describe 3 environment impacts arising from mineral resource exploitation. (6 marks)

- 07) i) Few districts with higher population in western, Northern and Eastern provinces have been marked in the map. Name 3 districts with higher urban population in each provinces. (3 marks)
- ii) a). Write three main methods which affect for gradual growth of urbanization process in Sri Lanka. (3 marks)
- b). Name 4 large urban zones of World. (2 marks)
- iii) Describe 3 Problems associated with urbanization in developing countries. (6 marks)
- iv) Describe 3 measures that have been taken by the government in order to solve problems associated with urbanization in Sri Lanka. (6 marks)



- 08) i) Define "mineral." (2 marks)
- ii) Name 3 types of minerals which are more economically important and write an areas for each where they are distributed in Sri Lanka. (6 marks)
- iii) Explain the importance of Mineral resources of Sri Lanka as industrial raw materials. (6 marks)
- iv) describe 3 measures which can be taken to minimize the environmental impacts arising from mineral resource exploitation (6 marks)