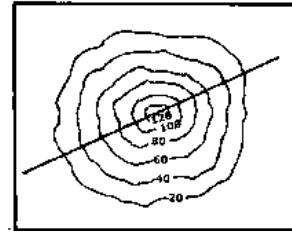
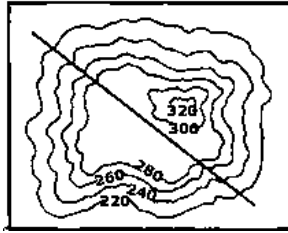
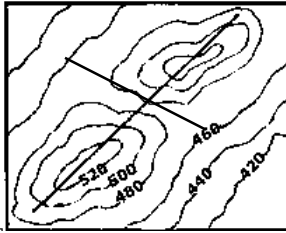


06). Which answer shows the correct order of following topographical features.



- i. gap, depression, conical hill
 - ii. gap, plateau, conical hill
 - iii. valley, plateau, conical hill
 - iv. Spur, plateau, residual hill
 - v. mountain range, plateau, conical hill
- (.....)

07). The number of additional satellites which have been placed in the orbit to be utilized in an emergency situation in GPS is,

- i. 24
- ii. 5
- iii. 31
- iv. 10
- v. 7

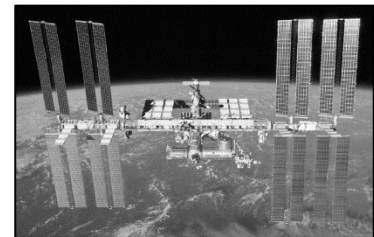
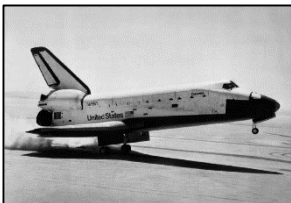
08). Select the answer that contains only specific Geographical Information Systems software,

- i. ArcGIS, QGIS, Photoshop
- ii. MapInfo, Excel, JetAudio
- iii. ArcGIS, MapInfo, ILWIS
- iv. Chrome, ArcGIS, ILWIS
- v. ILWIS, Arcview, ERDAS

09). What is represented by horizontal and vertical blue colour grid lines (grid network) in a topographical map of 1:50000 scale?

- i. grid network which belong to national co - ordinates.
 - ii. Longitude lines
 - iii. latitude lines
 - iv. longitude and latitude lines
 - v. Lines which shows time zone
- (.....)

10). The answer that name correctly the following space platform that used for Remote Sensing is,



- i. Aeroplanes, Apace Centres, Satellite
 - ii. Rocket, Aeroplanes, Space Crafts
 - iii. Space Crafts, Satellites, Space Centers
 - iv. Satellite, Space craft, Rockets
 - v. Space Crafts, space Centres, Satellite
- (.....)

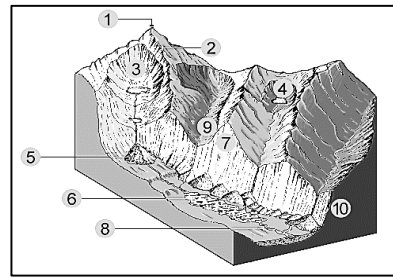
11). Of world earth quakes, more than 70% epicenters are located in,

- i. Mediterranean zone
 - ii. Peri - Pacific ocean zones
 - iii. East African rift valley zones
 - iv. Himalaya mountain range
 - v. Mid Atlantic oceanic zones
- (.....)

12). What are the landforms shown no 1,2 and 3 in adjacent diagram that shows landforms associated with glaciers,

- i. Arete, pyramidal peaks, hanging valley
- ii. pyramidal peaks, Arete, tarn lake
- iii. Arete, pyramidal peaks, cirque
- iv. Pyramidal peaks, Arete, cirque
- v. Pyramidal Peaks, Cirque, Arete

(.....)



13). Most suitable soil groups for paddy cultivation which are seen in both wet and dry zones in Sri Lanka.

- i. reddish brown earth soil ii. reddish brown latasols iii. Alluvial soil
- iv. Grumusols soil v. Red yellow podzol soil

(.....)

14). Large percentage of fresh water (3%) on the earth exist as

- i. Ice and glaciers ii. river water iii. water vapour
- iv. in plant and human body v. Soil water

(.....)

15). The main physical factor that affect the physical features like colour and texture in soil

- i. Time ii. Climate iii. Parent rocks
- iv. relief v. water and drainage

(.....)

16). Landforms formed by the Epeirogenic movement (vertical movement) are

- i. Fault and fold mountain ii. Ocean basin and fold mountain
- iii. fold mountain and Intrusive volcanoes iv. Intrusive and extrusive volcanoes
- v. fault and mid oceanic ridges

17). Main factors that affect the volcanic activity,

- i. pressure ii. Temperature iii. fissures and joints iv. Time v. above all

(.....)

18). Select the correct answer that shows metamorphosed rock which formed by changing the original rock

Original rock

- lime stone
- granite
- Sandstone

metamorphosed rock

- A. quartzite
- B. Shale
- C. gneiss
- D. Marble

i. A B C

ii. D C A

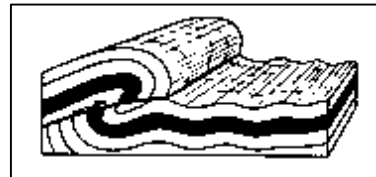
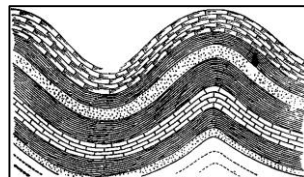
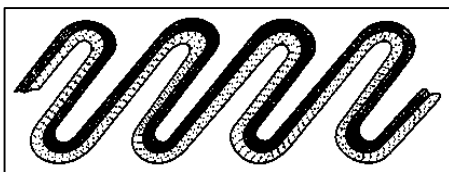
iii. D B A

iv. C A D

v. B C D

(.....)

19). The answer that name correctly the landform shown in following diagrams.



- i. monoclinial fold, symmetrical fold, thrust fold
- ii. Isoclinal fold, Asymmetrical fold, thrust fold
- iii. Isoclinal fold, symmetrical fold, thrust fold
- iv. monoclinial fold, symmetrical fold, asymmetrical fold
- v. Isoclinal fold, monoclinial fold, thrust fold

(.....)

- 20). A - rock particles collide with each other and turn into small particles
 B - Sand and dust particles are carrying away from the ground
 C - removal of rocks creates large depressions on earth's surface
 Above process that takes place in desert area are known as
- Solution
 - abrasion
 - deposition
 - deflation
 - corrosion
- (.....)

- 21). To which geological period, the rocks more than 70 million years old found in Tabbowa, Andigama and pallama areas belong,
- Miocene period
 - Jurassic period
 - Pre Cambrian period
 - Quartionary period
 - Helocene period
- (.....)

- 22). Select the answer when World major volcanoes (Column I) is correctly matched with their lacated countries (Column II)

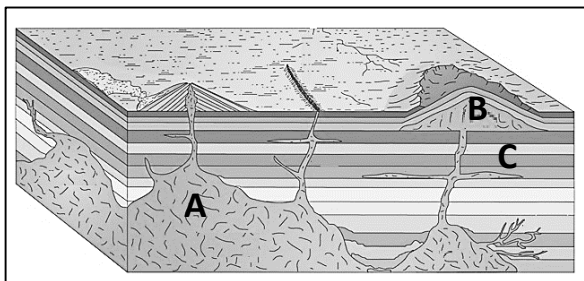
I. Valcano	II. Located country
• Fujiyama	A. Unied States of America
• Hecla	B. Japan
• Krakatoa	C. Indonesia
• St. Helena	D. Italy
	E. Iceland

- B, E, C, A
 - A, B, C, E
 - B, E, D, A
 - E, C, A, D
 - B, E, C, A
- (.....)

- 23). Select the answer that contain only landforms formed by tensional movement
- Symmetrical fold, assymetrical fold, isoclinal fold
 - thrust fault, rift valley, normal fault
 - rift valley, horst, monoclinal fold.
 - normal fault, symmetrical fold, rift valley
 - Synclitorium, normal fault, Step fault
- (.....)

- 24). of the plates by which the lithosphere consists according to the hypothesis of plate tectonics the answer that contatin only continental plates is,
- Indo - Australian plate, Iran plate, Pacific plate
 - Eurasian plate, Indo - Australian Plate, South American plate
 - Nazca plate, Cocos plate, Pacific Plate
 - Cocos Plate, Pacific plate, Antarctic Plate
 - Pacific plate, Phillippine plate, African Plate
- (.....)

- 25). Select the answer that shows intrusive volcanic land forms respectively which marked by the letters A, B, C, in the following diagram.



- Lopolith, Laccolith, Sill
 - Batholith, Laccolith, Phacolith
 - Batholith, Lopolith, Sill
 - Batholith, Lacolith, Dyke
 - Batholith, Laccolith, Sill
- (.....)

- 34). The name given commonly for the type of settlement built by the man Clustering around a tank, church, market or palaces.
- i. Linear settlement ii. Scattered settlement iii. Nucleated settlement
 iv. dispersed settlement v. junction settlement (.....)

- 35). Which answer contain the letter that shows Nigeria, the country with highest world population growth rate,
- i. F ii. A iii. D iv. B v. C



- 36). Which answer contains respectively a South American country shown by "F" and South Asian country shown by "D" which belong to most populated countries of the world 2015.
- i. Mexico and Iran ii. Brazil and India iii. Bangladesh and Cuba
 iv. Brazil and Pakistan v. Pakistan and Brazil (.....)

- 37). Which letter shows the Syria, a country of origin from which emigration occurs to European and African countries due to its internal conflict recently,
- i. E ii. B iii. A iv. D v. C (.....)

- 38). An Asian country where constrictive population pyramid which formed due to decreasing birth rate and increasing elderly population is seen.
- i. Indonesia ii. Phillippines iii. Japan iv. Maldives v. Thailand (.....)

- 39). According to the data published by the World Health Organization, the reason for the occurrence of women's death in the age group 15 - 44 more than due to cancer, malaria and road accidents.
- i. Violence ii. Pregnancy iii. Commiting suicide
 iv. abortion v. parturition (.....)

- 40). Factors affecting the dynamism in World population is given in following equation.

$\text{Population} = \text{Birth} - \text{death} \pm \text{net migration}$
--

here net migration is calculated,

- i. immigration - birth ii. emigration - immigration iii. immigration + emigration
 iv. immigration - emigration v. death - emigration (.....)



වයඹ පළාත් අධ්‍යාපන දෙපාර්තමේන්තුව Provincial Department of Education - NWP
 වයඹ පළාත් අධ්‍යාපන දෙපාර්තමේන්තුව Provincial Department of Education - NWP
 වයඹ පළාත් අධ්‍යාපන දෙපාර්තමේන්තුව Provincial Department of Education - NWP
 වයඹ පළාත් අධ්‍යාපන දෙපාර්තමේන්තුව Provincial Department of Education - NWP
 වයඹ පළාත් අධ්‍යාපන දෙපාර්තමේන්තුව Provincial Department of Education - NWP
 වයඹ පළාත් අධ්‍යාපන දෙපාර්තමේන්තුව Provincial Department of Education - NWP
 වයඹ පළාත් අධ්‍යාපන දෙපාර්තමේන්තුව Provincial Department of Education - NWP
 වයඹ පළාත් අධ්‍යාපන දෙපාර්තමේන්තුව Provincial Department of Education - NWP
 වයඹ පළාත් අධ්‍යාපන දෙපාර්තමේන්තුව Provincial Department of Education - NWP
 වයඹ පළාත් අධ්‍යාපන දෙපාර්තමේන්තුව Provincial Department of Education - NWP

Provincial Department of Education - NWP

22 E I

Second Term Test - Grade 12 - 2020

Geography I

Part - II

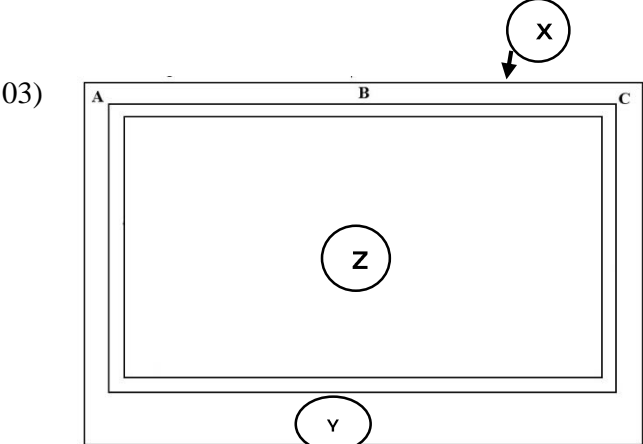
• **Answer all the questions**

- 01) Answer the following questions based on the metric map of 1:50 000 scale provided Contour interval is 20 m.
 - i. Name the feature shown by the line A - B in the map (1 marks)
 - ii. To which direction does the slope of the map extend? (1 marks)
 - iii. Name the type of vegetation shown by the letter "C" and the feature shown by the letter "D" (2 marks)
 - iv. Name main commercial crop seen in the square "E" (1 marks)
 - v. Calculate the distance of main road x - y in kilometers. (2 marks)
 - vi. Name six cultural features found in the square. "H" (3 marks)
 - vii. Calculate the area of the real land represented by the map. (2 marks)
 - viii. Comments on transportation system of the mapped area. (4 marks)
 - ix. Describe the relationship between relief and land utilization. (4 marks)

- 02) Mark and name following things in the outline map of World supplied. Use standard colours and symbols. (10 marks)
 - i. Andes mountain range
 - ii. Zambezi river
 - iii. Ukatan perinsular
 - iv. Barents sea
 - v. Capentarian bay
 - vi. Mongolia
 - vii Aleutian trench
 - viii Brundi state with lowest level of urbanization in Africa
 - ix. World largest fresh water lake
 - x. The country which held a referendum to leave European Union

Part III

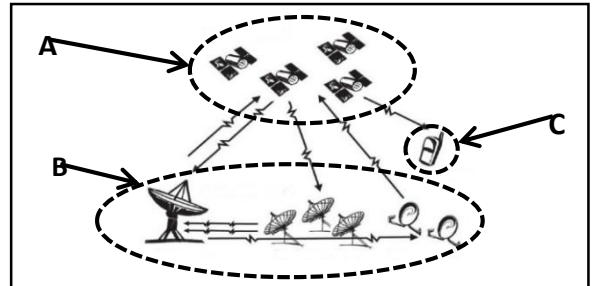
Answer only for two questions.



A model of 1:50 000 topographic map is given below.

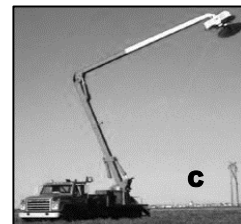
- i. Name the areas marked as X, Y, Z (3 marks)
- ii. Name information shown at the locations A, B, C in the area "X" (3 marks)
- iii. a. Write in centimeters the length and width of the area shown by Z in a map of 1:50 000 (2 marks)
- b. State in square kilometers the above area (2 marks)
- iv. Name 4 type of information shown in the area "Y" (4 marks)
- v. a. Name information shown in inner margin (3 marks)
- b. Name the place which was selected as the base point to prepare the National Grid system and describe how false origin has been located. (3 marks)

- 04). i. Define the term Global Positioning System (GPS) (2 marks)
- ii. Name the segments of Global Positioning System shown in the following diagram as A, B, and C and explain them briefly (6 marks)



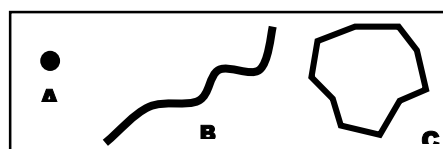
- iii. Describe three factors that affect for the accuracy of data related to Global Positioning System (6 marks)
- iv. Explain with reference to various fields 3 advantages of using of Global Positioning System (6 marks)

- 05). i. What is meant by Remote Sensing (2 marks)
- ii. a). Name the platforms that the following sensing instruments which used to collect data in remote sensing belong? (3 marks)



- b). Name two types of satellite which are identified according to the nature of their location and orbital path (3 marks)
- iii. Describe briefly arial photographic technology that use in Remote sensing. (6 marks)
- iv. Name four fields in which Remote Sensing Technology is used and describe with examples the usage of one field. (6 marks)

- 06). i. Define "Geographic Information System" (3 marks)
- ii. Name two main types of data used in Geographic Information System and describe one of them. (5 marks)
- iii. In a Geographic Information System, geographical features are represented by following symbols (topology) Name them and Write one example for each. (6 marks)



- iv. Describe with diagram above topologies are represented by vector data model or Raster data Model (6 marks)

03). The earth which is believed that it had its origin about 4600 million years ago, consists of several layers.

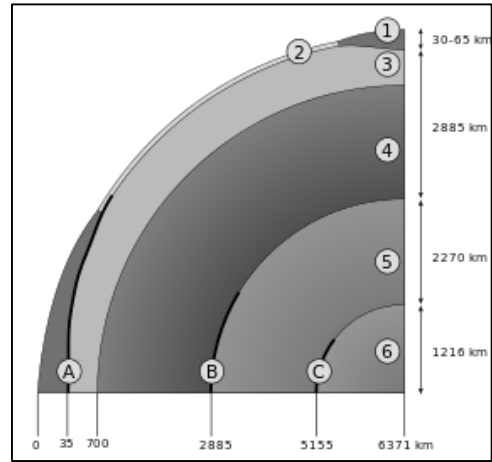
i. In this diagram that shows the structure of the earth's interior.

Name correctly

a). the layers shown by the number ④ and ⑥

b). two discontinuities shown by the letters B and C

(4 marks)



ii. a). What is the common name given for the layers shown by ①, ② and ③ when they are taken together. (3 marks)

b). Describe three features of layers, shown by number ① and ② (3 marks)

iii. Fill in the blanks using information given in the brackets related to Sedimentary rock classification according to the origin. (6 marks)

Disintegrated sedimentary	A	pebbles, Boulder clay, Breccia
	A renaceous	B
Chemically deposited Sedimentary rocks.	C	Salt, Salt rocks
	gypsum	D
E	Carbonaceous	F

(Hematite, Gypsum, coal, chloride, clay, Rudaceous, organic sedimentary, sand stone.)

iv. a). Name 2 fuel minerals with one distribution areas seen in Sri Lanka. (2 marks)

b). Name 4 non - metal minerals found in Sri Lanka and explain economical value of one of them. (4 marks)

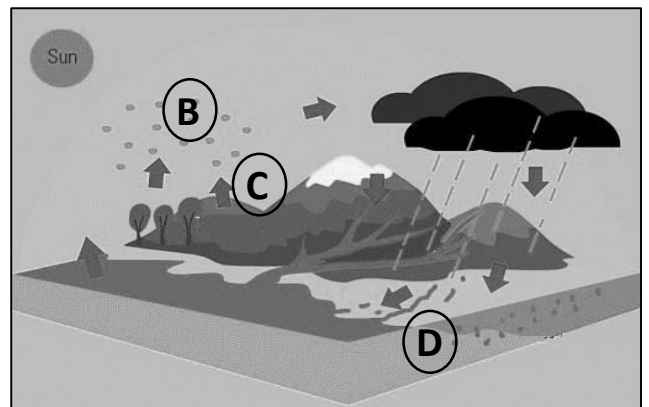
04). Water is needed to sustain life.

i. Define " hydrosphere" (2 marks)

ii. Name and explain briefly the processes shown by the letter A B C and D in this diagram which shows the processes of water cycle (6 marks)

iii. Describe with examples 2 ways how the processes of hydrological cycle affects the environmental phenomena. (6 marks)

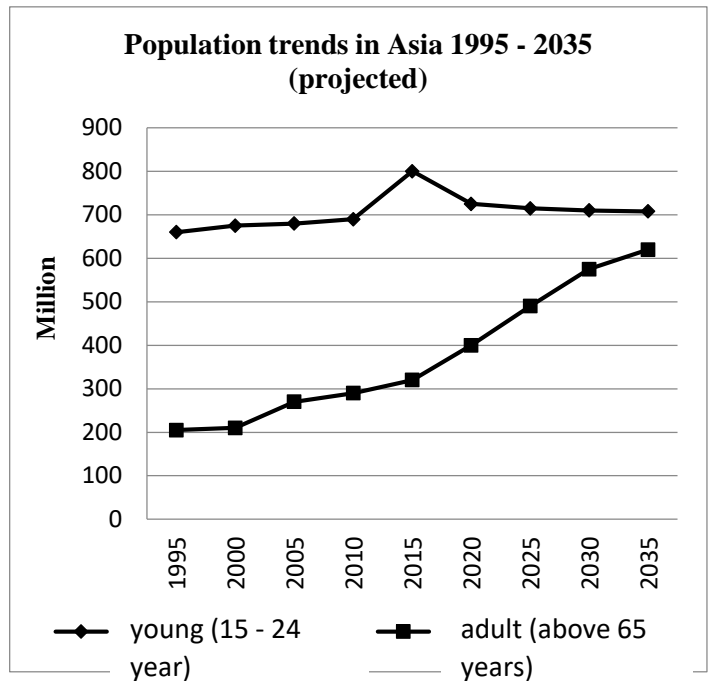
iv. Name 3 human activities which affect for water pollution or changing the quality of water and describe one of them. (6 marks)



Part II - Human Geography

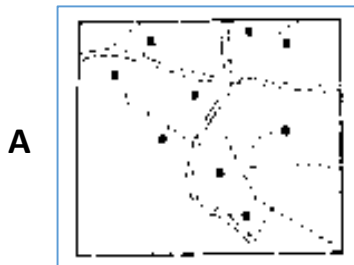
05). The most important resource of a country is its population.

- i. According to this graph, write two main salient features when comparing young population in the age group 15 - 24 and adult population in age group above 65 years from 1995 - 2035 (2 marks)
- ii. Discuss three main problems that should be considered in compiling development strategies for age group 15 - 24 (6 marks)
- iii. Explain two reasons which affect for the growth of adult population in most of the countries in present World (6 marks)
- iv. describe 4 Problems that should be considered for the adult population in socio - economic development in Asian countries. (6 marks)



06). " A habitat made by man on the earth's surface" - Dickinson

- i. Two main settlement patterns that can be identified in the Word is shown in the following diagram Name them correctly.



(2 marks)

- ii. Describe 3 measures which have been taken for the development of settlement seen in the "A" in Sri Lanka. (6 marks)
- iii. a). Name 3 main types of settlement seen in Sri Lanka. (3 marks)
- b). Explain Features seen in one of above settlement (3 marks)
- iv. Name 3 physical and human factors that affect for the origin of settlement and describe one of them. (6 marks)

07). The Urbanization which grew in parallel with the industrial revolution is a phenomenon that has been responsible for many socio - economic changes World over.

i. Following map shows few countries which recorded minimum level of World urbanization in 2014. Name countries A,B, C and D correctly.

(2 marks)

ii. What are the name given for the New urban zone which have distributed by crossing the countries at present and name distribution areas of those zones.

(6 marks)

iii. Explain three sectors which spread to other areas originating form the urban centers.

(6 marks)

iv. Describe 3 measures that have been taken by the government in order to solve problems associated with urbanization in Sri Lanka.

(6 marks)

08). " The movement of people that takes place between geographical units resulting in a change in the usual residence is migration" - United Nation.

i. Write four main features of international migration

(4 marks)

ii. Discuss 2 problems which has to be faced by developed countries due to migration

(4 marks)

iii. Describe factors which induce international migration.

(6 marks)

iv. Explain 3 main features that are seen in migration in Sri Lanka.

(6 marks)

