

දේවි බාලිකා විද්‍යාලය - කොළඹ
DEVI BALIKA VIDYALAYA - COLOMBO



Last Term Test - 2011
Science I

Grade 7

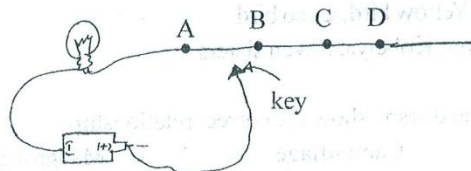
2 hours

- * Underline the most suitable answer.
- Not a relationship between plants and animals.
 - Butterfly sucks nectar from a flower.
 - Making bird hests on trees.
 - A pair of house sparrows living in a pot fixed on a wall of a house.
 - Eating plant leaves by a caterpillar.
 - Not a strategy for protection
 - Rolling the body of milledede & pangolin
 - Drinking milk of a cattle from it's mother
 - Producing a current by electric eel
 - Puffing the body of a porcupine fine
 - Following is a food chain.
Chillie plant \longrightarrow Snail \longrightarrow Coocal \longrightarrow Fox
number of carnivores in the food chain is
 - 4
 - 3
 - 2
 - 1
 - Lorantes is
 - Central Plant
 - Semi Parasitic Plant
 - Xeroplytic Plant
 - Aquatic Plant
 - The group of organisms who migrates.
 - Cannary bird, Coco bird, Avichchiya
 - Pardise Fly Catcher, Avichchiya, Siyakkaraya
 - Kahibella, Yellow bird, Coco bird
 - Wood pecker, Kobeiya, Seven sisters
 - The answer which doesn't show the correct relationship
 - Frog — Camouflage
 - Mangroves — respiratory roots
 - Orchid — arial roots
 - Squirrel —

7. Not a prevention method of soil erosion
- Growing grass
 - Cutting drains along q lines
 - Reforestation
 - Cutting down trees for chena cultivation
8. Examples of homogenous & heterogenous mixtures respectively
- Salt solution, Sugar solution
 - Copper sulphate Solution & Condis solution
 - Flour solution, Salt solution
 - Salt solution, flour solution
9. The group containing metals.
- gold, mercury, carbon
 - Sulper, carbon, nitrogen
 - Silver, phosporous, copper
 - Iron, Alumenium, gold
10. An acid, base and a neutral substance used in domestic work respectively.
- lime juice, water, soap water
 - Salt, kerosine oil, vinegar
 - Tomato, Soap water, water
 - Coconut oil, Kerosine oil, tamarinal
11. The density of kerosine oil 800 kgm^{-3} . The density of water is 1000 kgm^{-3} . The specific density of kerooine oil is
- $\frac{1000 \text{ kgm}^{-3}}{800}$
 - $\frac{800 \text{ gcm}^{-3}}{1000}$
 - 0.8
 - 0.8 kgm^{-3}
12. An egg sinks in a water vessel The correct diagram of showing the position of the egg of which the density of egg is equal to the density of salt solution made by adding salt to the water.



13. When keeping the key on which position will the bulb glow with more brightness in the following circuit.



- A
- B
- C
- D

14. Which type of simple machine contains. Staircase, ladder and screw nail.
- Lever
 - Inclined plane
 - Wheel & axle
 - Endless chains & log wheels
15. The energy transformation occurs when flowing down of water from an upper reservoir
- Potential energy \longrightarrow Mechanical energy
 - Kinetic energy \longrightarrow Potential energy
 - Potential energy \longrightarrow Kinetic energy
 - Kinetic energy \longrightarrow Electrical energy
16. Find the correct relationship.
- Thomas Alva Edison - Gramophone
 - Charles Babbage - Steam engine
 - Robert H. Goddard - Rocket engine technology
 - James Watt - Internal combustion engine
17. An ill effect occurs due to destroying coral reefs.
- Cyclones
 - Tsunami
 - Flood
 - Sea erosion
18. Examples for a circular motion and a rotational motion respectively.
- Turning a top, rotation of the earth around its axis
 - Turning a fire ball, turning a top
 - Moving the earth around the sun, a vehicle taking a bend
 - Turning a fire ball, motion of a pendulum
19. Not an insectivorous Plant
- Nepenthes (බාඳුරා)
 - Drosera (කඳුලැස්ස)
 - Utricularia (නිල්මොණරැස්ස)
 - Ferns (මුවන ශාක)
20. The group containing colourful salts.
- Salt, baking powder, burnt lime
 - iodine, copper sulphate, copper carbonate
 - salt, slaked lime, baking powder
 - flour, baking powder, lime stone

(2 x 20)

දේවි බාලිකා විද්‍යාලය - කොළඹ
DEVI BALIKA VIDYALAYA - COLOMBO



Last Term Test - 2011
Science II

Grade 7

Answer only 5 questions.

1. i. Fill in the blanks using the suitable word
 - a. Removing water in the form of vapour through leaves.....
 - b. The father of the computer
 - c. The place of an object where the force acts
 - d. The outer cover of a plug is made out of
 - e. The simple machine which can be used to change the direction of the effort.....
 - f. The type of motion occurs when falling down an object from an upper place.....

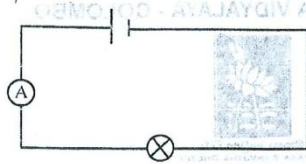
(1x6=6)

b) Mark ✓ or ✗

- a. Speed is a vector quantity. ()
- b. Air is used to transmit energy in hydraulic jack ()
- c. Cobra has the ability to regenerate ()
- d. Cuscuta is not a photosynthetic plant ()
- e. Amount of soil water is very low in loamy soil ()
- f. Tornadoes occur due to the pressure differences occur in the atmosphere ()
- g. Resistance increases when increasing length of the wire ()

(1x6=6)

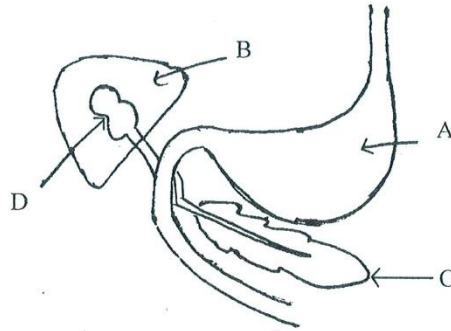
2. Answer the questions using the given circuit.



- i. Name the instrument which should be used to measure the voltage of the bulb. (1)
 - ii. What is the standard symbol of the instrument which you mentioned above. (1)
 - iii. Mention the SI unit of measuring voltage in word and in symbol. (2)
 - iv. Connect that instrument which is used to measure the voltage to the circuit and re-draw the circuit diagram (1)
 - v. If a new torch battery is used for the circuit what will be the voltage of it (1)
 - vi. What is the voltage of domestic current (1)
 - vii. Draw a suitable circuit diagram to show the way of connecting two dry cells in order to increase the intensity of the bulb. Mention the name of the method of connecting the two dry cells to the circuit. (3)
 - viii. Name 2 materials that can be used to generate static electrical chargers (1/2x2=1)
 - ix. State 2 essential features should present in materials which can be used to generate static electricity. (1/2x2 = 1)
- (12)
3. Various types of forces are used in daily activities A force is a push or a pull
- i. What is the SI unit of measuring force. (1)
 - ii. Draw this in a scale diagram $\xrightarrow{10N}$ (2)
 - iii. Name the types of forces used in the following instances
 - a) Stretching a rubber band
 - b) A fruit falling from a tree
 - c) Taking a plastic rod rubbed by polythene near to a small piece of regiform
 - d) When two vehicles colliding each other (4)

- iv. What are the reasons that of "Pluto" is to considered as a "drawft planet"

(B)



- i. Label the parts A, B, C and D. (2)
- ii. Substances are transported throughout the body by blood. Name the Parts of the blood circulatory system. (2)

(C). Atmosphere is very important for all the vital activities of the earth.

- i. Large number of living organisms live on the earth than the upper layers of the atmosphere. Explain the reason for that. (1)
 - ii. State 2 factors for the existance of living organisms only on the earth. (2)
 - iii. Explain the reasons for your answer briefly. (1)
- (12)