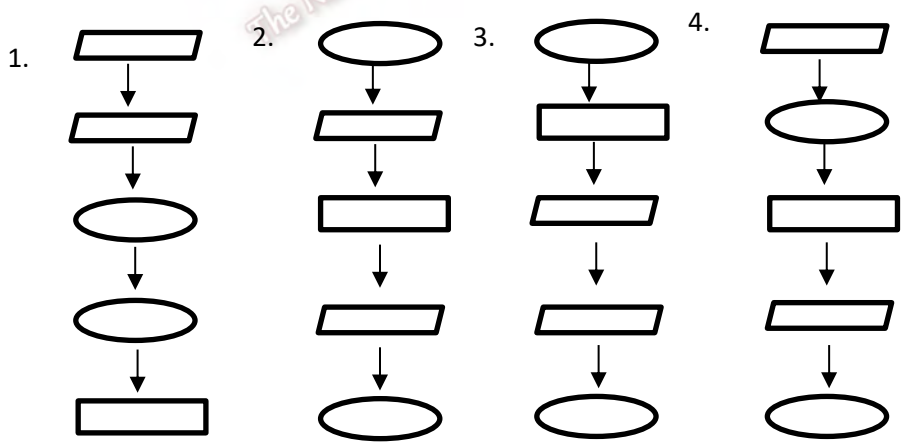


**Part I**

**Answer all questions.**

- 1) Which unit is used to measure the speed of CPU?  
 1. Hz                                      2. GB                                      3. MIPS                                      4. BIT
- 2) Which device is not a magnetic device?  
 1. Magnetic tape    2. Floppy disk                      3. Hard disk    4. Flash drive
- 3) Which tag is used to display an image of a website?  
 1. <image>.                              2. <body>                              3. <imgsrc>                              4. <ul>
- 4) Find out the part of a CPU?  
 1. UPS                                      2. CPU                                      3. ALU                                      4. CPU
- 5) Which device is not a storage device?  
 1. Blu ray disk    2. DVD                                      3. Zip Drive                                      4. CD ROM
- 6) Which key or composition of keys is used to display the word “க” in tamil?  
 1. Shift + F                              2. F                                      3. Shift + K                                      4. K
- 7) What is the software is not used for video conferencing?  
 1. Skype                                      2. Go to Meeting                                      3. Webex                                      4. Scratch
- 8) What is the expansion of WWW?  
 1. Wide World Web    2. Web World Wide    3. World Wide Web    4. Word Wide Web
- 9) What is the correct order of the following structure?




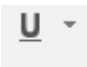


- 10) Which of the following is not necessary for using internet?  
 1. Router    2. scanner    3. Internet Service Provider    4. Computer
- 11) ..... is not found in an e-mail window?  
 1. Sent    2. Delete                                      3. Contacts                                      4. Download

12. The spreading virus of a computer is .....  
1. Computer virus    2. Trojan horse    3. Spyware    4. computer worms

13) What is the correct step for opening a Power Point software?  
1. Start → All Programs → Microsoft Office → Microsoft Power point  
2. Microsoft Power point → Microsoft Office → All Programs → Start  
3. Microsoft Office → Microsoft Power point → All Programs → Start  
4. Start → All Programs → Microsoft Power point → Microsoft Office

14) Which is not an example for word processing software?  
1. Ms Word    2. Ms Power Point    3. Word Starter    4. Works Pages

15) What is the correct step for hiding a slide?  
1. Right click on the expected slide and select hide option.  
2. Right click on the expected slide and select cut option.  
3. Right click on the expected slide and select copy option.  
4. Right click on the expected slide and select paste option.

16) Which tool is used to display bold text?  
1.     2.     3.     4. 

17) Which is not an example for web browser?  
1.     2.     3.     4. 

18) Collections of network is called as .....  
1. Internet    2. router    3. URL    4. e-mail

19) Which action is incorrect for maintaining the physical safety of a computer laboratory?  
1. Avoiding the slippers in computer laboratory.  
2. Avoiding food and drinking in computer laboratory.  
3. Avoiding wet in computer laboratory.  
4. Avoiding cooling fan in the computer laboratory.

20) Which of the following precautionary action is not suitable for protecting computer from virus?  
1. To open suspicious e-mail.  
2. Access secure websites.  
3. Update all software installed in computer including the operating system.  
4. Do not open black listed websites shown by antivirus software.

(20x2=40 marks)

**Part II**

Answer the **first questions** and any other **two** questions.

01) I) Write four usage of website?

1. ....
2. ....
3. ....
4. ....

II) Write two action for protecting computer from virus?

1. ....
2. ....

III) Which technology is used in fourth generation computer?

.....

IV) Write two actions for avoiding unwanted entering of a computer?

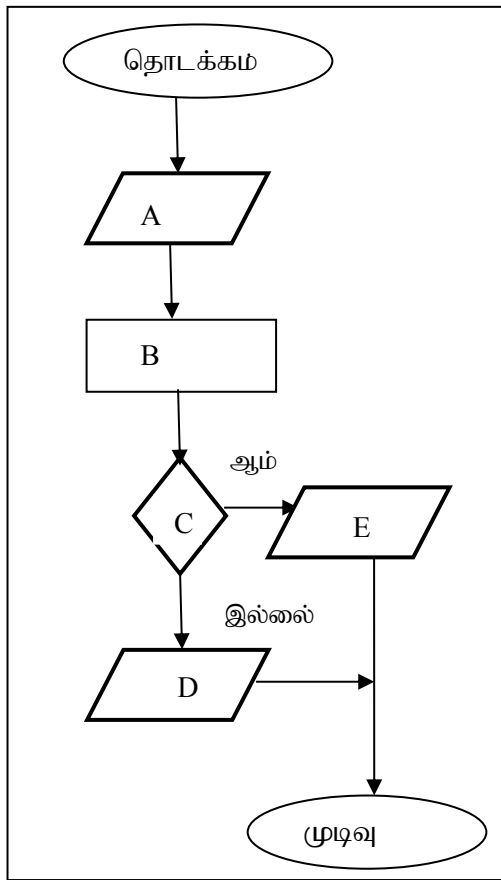
1. ....
2. ....

V) Write two disadvantages of malware software?

1. ....
2. ....

**(5x4=20 marks)**

02) A) The following flowchart draws for finding the odd number or even number. Fill in the blanks using suitable English letter.



1. To input a number;-----
2. Divide the number by two and findout the mod -----
3. If mod=0?-----
4. Odd number -----
5. even number-----

(5x2=10 marks)

b) Fill in the blanks using the answer from brackets.

(Enter, space bar, backspace, arrow, caps lock)

- 1) ..... Key is used to move the cursor up, down, left and right.
- 2) ..... Key is used to delete any character, space, number or any other object to the left of the cursor.
- 3) ..... Key is used to move the cursor down to the next line.
- 4) ..... Key is used to create empty space between two words.
- 5) ..... Key is used to type capital letters.

(5x2=10 marks)

03) A) List out the following hardware devices into the suitable column in the table.

(monitor, motherboard, power supply, keyboard, mouse, cooling fan, hard disk, CD Rom, RAM, CPU)

Externally visible hardware;	Internally visible hardware
1.-----	1.-----
2.-----	--
3.-----	2.-----
--	--
4.-----	3.-----
-	--
5.-----	4.-----
--	-
6.-----	5.-----
--	-
	6.-----
	-

(10x1=10 marks)

B) Write two free internet service Provider?

1.----- 2.-----

(2 marks)

c) Write two examples for video conferencing software?

1.----- 2.-----

(2 marks)

D) Fill in the blanks using the following words.

(To, Trash, sent, junk, subject, attachment)

1) ..... is used to enter the sender's e-mail address.

2) E-mails sent by you are contained in .....

3) The deleted messages are temporarily stored in .....

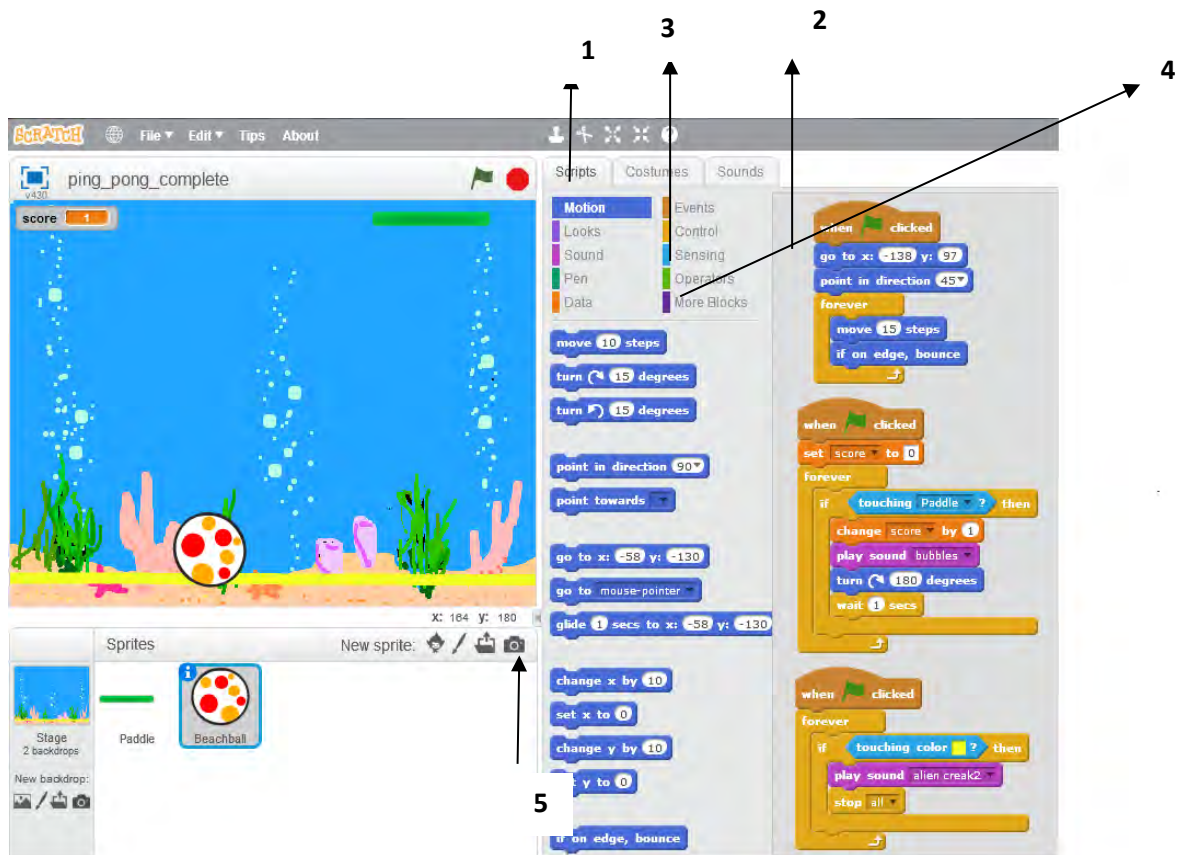
4) The heading of the e-mail is in .....

5) Unnecessary e-mails are in .....

6) ..... is used to attach images in e-mail.

(6x1=6 marks)

04) A) Fill in the blanks using suitable number of the following interface.



- 1) Run .....
- 2) Includes musical instruments and basic notes to create sound and sound patterns.....
- 3) Receive input .....
- 4) Includes command block pertaining to make a variables and assign value.....
- 5) Sprite library tool .....

(5x2=10 marks)

**B) Match A With B**

**A**

- 1) Software privacy
- 2) Computer virus
- 3) Hacking
- 4) Cyber crime

**B**

- Unexpected deletion of files or overwriting
- Unauthorized accessing of data
- Sharing unwanted information through internet.
- Copy and sale the software without any permission of owner.

**(4x1=4 marks)**

c)



list

file:///C:/Users/DAS

1. input device

- key board
- mouse

2. out put

- monitor
- printer

computer

Fill in the blanks using the following tags.

<ol> ,<ul>, <img>, <li.>,<head>

<html>

<.....>

<title> list </title>

</head>

<body>

<-----src ="C:\Users\DAS\Desktop\computer.jpg" > align="center" >

<a href= "computer.html">computer </a>

<ol>

<li> input device </li>

<-----type="disk">

<li> key board </li>

<li> mouse</li>

</ul>

<----->out put</li>

<----- type="circle">

<-----> monitor</li>

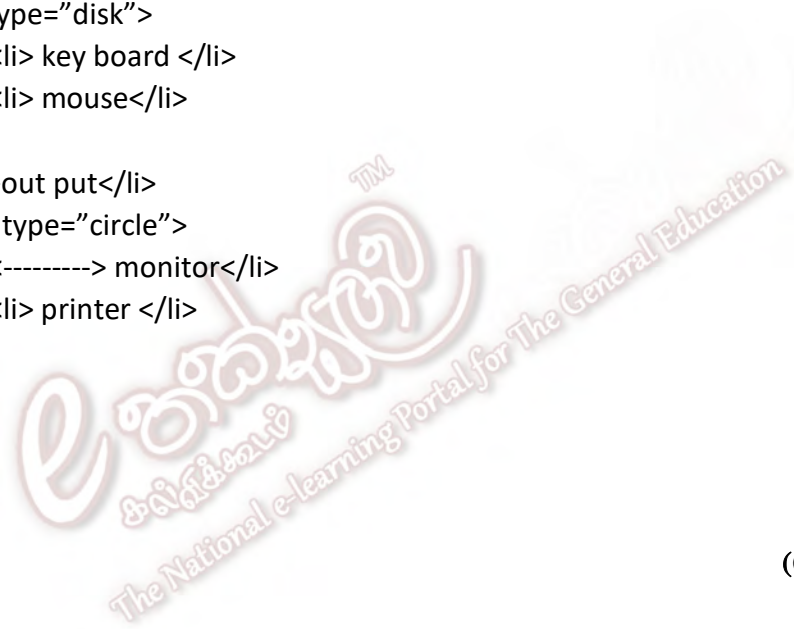
<li> printer </li>

</ul>

</ol>

</body>

</html>



(6x1=6 marks;)