



Zonal Education Office - Vadammarachchy

Second Term Examination - 2019

Information and Communication Technology

Grade - 07

Time: 02 hours

Part – I

Select the suitable answer

1) Which is not a characteristic of computer?

- | | |
|---------------------|---------------|
| 1. Accuracy | 3. Unreliable |
| 2. Storage Capacity | 4. Speed |

2) Which one is an input device?

- | | |
|------------|-------------------------|
| 1. Scanner | 3. Printer |
| 2. Monitor | 4. Multimedia Projector |

3) Which one is not a component of CPU?

- | | |
|----------------------------|--------------------|
| 1. Control Unit | 3. Memory Register |
| 2. Arithmetic logical Unit | 4. System Unit |

4) is a primary memory.

- | | |
|---------------------|-----------------|
| 1. Hard disc | 3. Compact disc |
| 2. Read only memory | 4. Pen Drive |

5) Which one is an example of solid state storage device?

- | | |
|----------------|-------------------|
| 1. Memory Card | 3. Blu – Ray disc |
| 2. Hard Disc | 4. Compact Disc |

6) What is the shortcut key to save a file?

- | | | | |
|-------------|-------------|-------------|-------------|
| 1. Ctrl + C | 2. Ctrl + X | 3. Ctrl + S | 4. Ctrl + V |
|-------------|-------------|-------------|-------------|

7) What is the measurement unit for speed of modern computer?

- | | | | |
|---------|--------|-------|-------|
| 1. Byte | 2. GHz | 3. MB | 4. GB |
|---------|--------|-------|-------|

8) What is the technology used in third generation computers?

- | | |
|----------------|-----------------------|
| 1. transistors | 3. Micro processor |
| 2. Vacuum tube | 4. Integrated Circuit |

9) What is the capacity of compact disc?

- | | | | |
|-----------------|--------------|-----------|---------|
| 1. 650 – 900 MB | 2. 1 – 64 KB | 3. 4.7 GB | 4. 1 TB |
|-----------------|--------------|-----------|---------|

10) Consider the following statement regarding Operating System

Statement 1 – Giving the user interface

Statement 2 – Managing the computer memory

Statement 3 – Controlling the function of storage devices

which statements are correct?

- | | |
|--------------------------------|--------------------------------|
| 1. Statement 1 and Statement 2 | 3. Statement 1 and Statement 3 |
| 2. Statement 2 and Statement 3 | 4. All Statement are correct |

11) What is the Operating System not used in smart phone

- | | | | |
|------------|--------|------------|----------|
| 1. Android | 2. iOS | 3. Windows | 4. MacOS |
|------------|--------|------------|----------|

12) Which one is considered as optical storage device?

- | | |
|--------------|-----------------|
| 1. Zip disk | 3. Blu-Ray disk |
| 2. Pen Drive | 4. Memory Card |

13) What is the shortcut key for delete the file permanently in a computer?

- | | |
|-------------------|-----------------|
| 1. Shift + Delete | 3. Delete |
| 2. Ctrl + Delete | 4. Alt + Delete |

14) Which is the example of search engine?

- | | |
|----------------------|--------------------|
| 1. Google Chrome | 3. Bing |
| 2. Internet Explorer | 4. Mozilla Firefox |

15) Which is the software, while it seems useful software at first sight, it will cause damage to the user secretly once he begins to use it?

- | | |
|-------------------|-------------------|
| 1. Computer virus | 3. Computer worms |
| 2. Trojan horse | 4. Spyware |

16) Which one has more storage capacity?

- | | |
|--------|----------------|
| 1. DVD | 3. Hard Disk |
| 2. CD | 4. Floppy Disk |

17) Which place is store the temporary delete file in computer?

- | | |
|----------------|--------------|
| 1. My Computer | 3. Desktop |
| 2. Recycle Bin | 4. Documents |

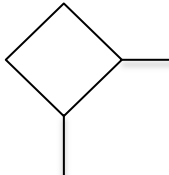
18) Which is the example for special use software?

- | | |
|-----------------------------|--------------------------|
| 1. Library system software | 3. Spread sheet software |
| 2. Word processing software | 4. Database software |

19) When comparing the computer generation growth, which characteristics are increasing?

- | | |
|------------------------------|----------------------------------|
| 1. Speed, Size | 3. Capacity, Speed |
| 2. Size, Consume electricity | 4. Consume electricity, Capacity |

20) What is the symbol for process in flow chart

- | | |
|----------------------------------------------------------------------------------------|-----------------------------------------------------------------------------------------|
| 1.  | 3.  |
| 2.  | 4.  |

(20 X 2 =40 Marks)

Part - II

Answer only three questions including first question

(1) Fill in the blank by choosing the correct answer in the bracket

(Router, Hard disc, Washing Machine, RAM, TIPP10, Open Office Writer, USB, ENIAC, Touchscreen, Windows10)

- is a volatile memory.
- is an example of embedded system.
- is an example of computer software
- is a first generation computer.
- is an input and output device
- is a communication device
- is a word processing software
- is a typing tutor software
- port is used to connect modern printer in computer.
- is a storage device.

(10 X 2 = 20 Marks)

(2)

- Write four precautions to avoid or minimize damages created by malware
- Write three issues created in the computer by malware
- Give three software Protection methods for protect information in computer
- Give three examples of graphical software.
- Give two examples of video editing software.
- Give five examples of computer hardware.

(4+3+3+3+2+5 = 20 Marks)

(3) (I) given some tools in Paint software .write the correct face label in given functions.



P



Q



R



S



T

- Cut the unnecessary part of the image
- Coloring the shape
- Easy to coloring closed part or shape
- Draw a line
- Type the text

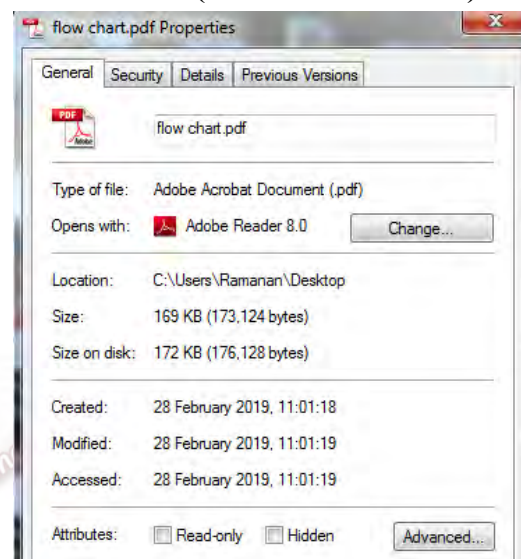
(II) Select the suitable shortcut key in the bracket for the given action
(Ctrl + C, Ctrl + W, Ctrl + X, Ctrl + V, Ctrl + O)

Action	Shortcut Key
Open a file	
Closed a file	
Copy a file	
Paste a file	
Cut a file	

(10 + 10 = 20 Marks)

(4) (I) Answer the following question by using the given figure

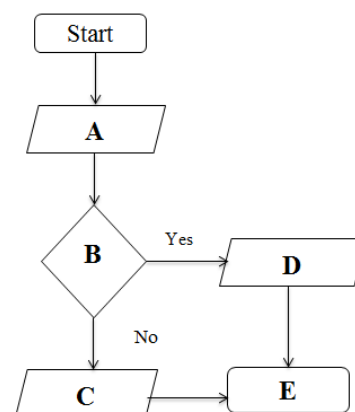
- What is the file extension?
- What is the file name?
- What is the file size?
- What is the created date
- What place is to store this file?



(II) The given flowchart describe, if the Candidate got the marks is Greater than 40 then the result is **Pass** otherwise **Fail** in a particular exam. Select the correct answer from within bracket for face label.

(Stop, Exam Mark, Pass, Fail, Exam Mark > 40?)

- A
- B
- C
- D
- E



(10 + 10 = 20 Marks)