

Educational Zone - Sri Jayawardhanapura
Frist Term Evaluation - 2019
Geography - Part I, II

Grade 11

Time :- 03 hours

Part I

- **Answer to all the questions on this paper itself according to given instructions.**
- **Write answers from question no 1 to question no 10 by selecting correct answer given within brackets in the blank provided.**

01. The two parts of earth crust are continental crust and
(Ocean / hydro / glazier)
02. By using..... it was able to get higher harvest for short term cultivated crop not only in various crops bust also in animal husbandry.
(Human technology / greenhouse effect / usage of machines)
03. Most number of people in Sri Lanka engage in.....
(Agriculture / Industry / Services)
04. Among the problems faced by current tea estate industry.....
take the basic place
(Lack of land / Lack of labour / high cost for fertilizer)
05. The coastal border of 12 m of navy miles from the coastal line of a country is called
.....
(Territorial / nearby / economic zone)
06. Rajanaganaya is an export villiage for
(betel / chillies / cashew)
07. A basic country in the world us pond water for transportation in industries is
.....
(china / India / united states of America)
08. The type of lime stone spread in Jaffna peninsula and North western coastal line is
.....
(gneous / sedimentary / metamorphie)

09. A type of plants that having height over 1400 m spread in hill country and afford to strong wind with twisted nature can be seen in forests.

(hill country wet zone / hill country dry zone / tropical wet zone)

10. A “bogala mine” which provide iron oves basically in Sri Lanka is located indistrict
(Kegalle / kaluthara/ Kurunegala)

11. The equilibrium of lithosphere can be breakdown due to various constructions
(True / False)

12. The crust of continents consist of Basalt rocks (True / False)

13. it is easy to expand the market by variation of agricultural products (True / False)

14. Kurunegala district is the district that shows highest production of paddy.
(True / False)

15. Wind power stations located in “Kerawalapitiya” and Norechchole in Sri Lanka
(True / False)

- There are 2 columns named as (a) and (b) for the questions from 16 to 20.
- Write the number relevant to answer on the dotted line after matching (a) and (b)

16. The basic crops in Sri Lanka is denoted in columns (a) and the research centers relevant to crop is denoted in part (b) select correct answer after matching (a) and (b) in order.

	(a)	(b)
i.	Mahailuppallama	A Coconut
ii.	Agalawatta	B Paddy
iii.	Thalawakele	C Rubber
		D Tea

1. BCA 2. BCD 3. CBA 4. CAD (.....)

17. The basic agricultural crops in Sri Lanka is denoted by column (a) and the relevant type of soil to grow the crop is denoted in column (b) select correct answer after matching (a) and (b) in correct order

(a)

- i. Wheat
- ii. Tea
- iii. Rubber

(b)

- A Clayey soil
- B mixed red soil
- C Virthosm
- D Loamy Laterite soil

1. BCA 2. BCD 3. CBA 4. CAD (.....)

18. The basic rivers in the world is denoted by column (a) and the sea areas that column (b) select correct answer after matching (a) and (b) in correct order.

(a)

- i. Mississippi river
- ii. Nile river
- iii. Hovanho river

(b)

- A yellow sea
- B Bay of Bengal
- C meditation sea
- D Bay of Mexico

1. CDA 2. CBA 3. ADB 4. DCA (.....)

19. The basic type of rocks that earth crust consist of denoted by column (a) and the secondary rocks belongs to above rocks is denoted by column (b) select the correct answer after matching correctly.

(a)

- i. Igneous rocks
- ii. Sedimentary rocks
- iii. Metamorphic rocks

(b)

- A Coal gipsm
- B Granite Grabo
- C Diamond
- D Basalt Dolamite

1. BAC 2. ACB 3. DCA 4. CBD (.....)

20. The basic forests in the world is denoted by column (a) and the special features of above forests in denoted by column (b) select the correct answer after matching (a) and (b) in correct order.

(a)

- i. Tropical rain forests
- ii. Temperatue climatic forests

(b)

- A Plant leaf is like needles
- B Less bio diversity

iii. Coniferous forests

C Has strong bark and leaf blade is broad

D The speed growth of plants

1. BDA 2. CAB 3. DBA 4. ADC (.....)

• Write the correct answer from question no 21 to 30 in the given blank.

21. The gas needed for photosynthesis is
22. The zone that gives highest fish production from fishery industry in Sri Lanka is
23. The agricultural technical garden is located at
24. type of soil is commonly spread in down wet zone of Sri Lanka
25. The type of maps that is created by the combination of physical features and cultural features of earth is
26. ASmbalantota paddy research center was located at district
27. Mineral oil distillation factory of Sri Lanka is located at
28. Meethiyagoda where the "Thedalin" clay are was located belongs to .. districts.
29. The year was a year that relatively highest paddy production has been recorded in "Yala" and "Maha" seasons
30. Haggala, Yala, Ritigala are three conservatives.

• From question no 31 to 40 select most suitable answer and write on dotted lines.

31. What is the border that in earth atmosphere the ozone layer is located inside the sphere?
1. between 20km - 30 km 2. between 35km - 45 km
3. between 30 km - 40 km 4. between 40 km - 50 km
-)
32. Select the year the international ocean law of which belongs to all the Coastal line countries has been established?
1. In 1972 2. In 1982 3. In 1994 4. in 1996
-)

33. The order of countries which two areas namely Tecsas and New carcel which famous for cotton cultivation belongs to?

- | | |
|---|-------------------|
| 1. United states of, Australia, America | 2. Britain Mexico |
| 3. Canada, Britain | 4. Rassia, France |

(.....)

34. Select the correct statement which show coconut triangle correctly,

1. Colombo, Chilaw and Gampaha included area
2. Colombo, Kurunegala and Puttlam including area
3. Colombo, Chilaw and Puttalam including area
4. Colombo, Chilaw and Kurunegala including area

(.....)

35. The country which take first place in production of wheat in the world,

- | | |
|----------|-----------------------------|
| 1. Chine | 2. United states of America |
| 3. India | 4. Rassia |

(.....)

36. Thorin - 10 is called

- | | |
|-------------------|------------------|
| 1. type of paddy | 2. type of wheat |
| 3. type of cotton | 4. type of Barli |

(.....)

37. Select two types of gneous rocks

- | | |
|----------------------|---------------------|
| 1. Coal, Gipsm | 2. Granite, Basalt |
| 3. Diamond, Dolomite | 4. limestone, Gabro |

(.....)

38. The area that the mineral llmant is commonly found as oves,

- | | |
|-----------------------------|---------------------------|
| 1. Nilaweli and Marawila | 2. Kaikawala and Pulmudai |
| 3. Iranamadu and Naththandi | 4. Pulmudai and Nilaweli |

(.....)

39. According classification of minerals select a mineral which not belongs to metal,

- | | | | |
|-----------|--------------|-----------|-------------|
| 1. Rutile | 2. Manganese | 3. Ferrus | 4. Graphite |
|-----------|--------------|-----------|-------------|

(.....)

40. Select the plant and animal group in order which can be seen only in tropical rain forests,

1. Soft timbered trees with straight stem, ox, tiger
2. Trees having strong bark, tiger wolf

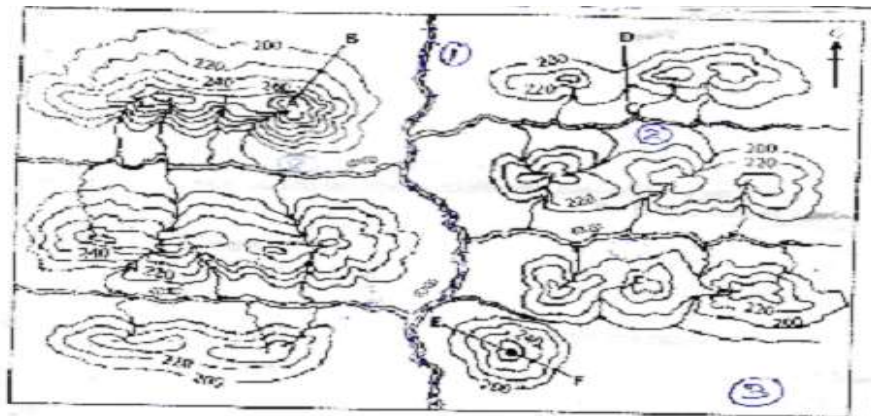
3. Trees having leaves like needles. deer, ox
4. Trees having most no of leaves of broad leaf, Gorilla, tiger

(.....)

Geography - Part II

- There are 2 parts of this paper
- Part I questions are compulsory. Write answers for all the parts of (a) , (b) and (c)
- Answer only 4 questions from part II
- The total no of questions to be answered is 05.

Part I



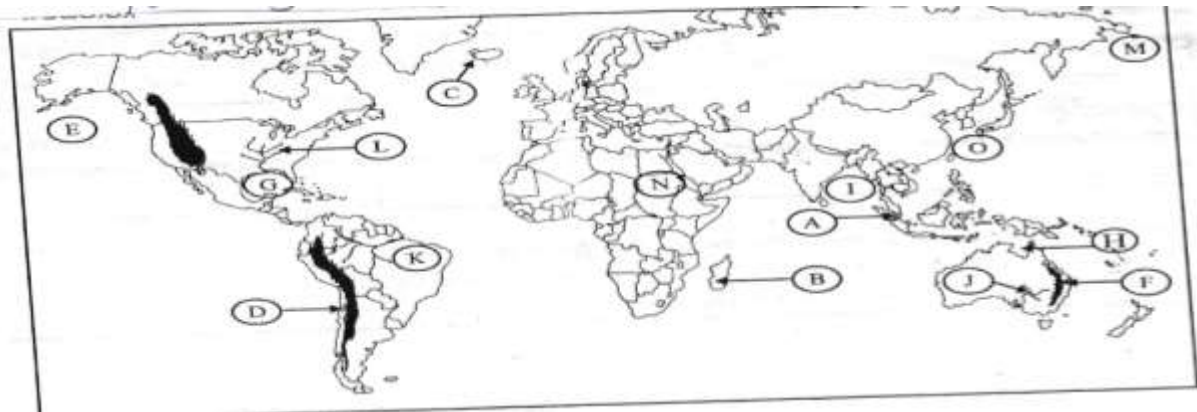
01. (a) Answer the questions by considering the part of map drawn to scale
1 : 50000

Select answers from part (i) to part (iv) from the answers given in brackets

- i. A-B line of the figure indicatesslope
(convex / concave / ESCARPMENT) (1 mark)
- ii. Select the geographical feature indicate by the line C- D
(mountain rangel / passes) (1 mark)
- iii. Select the geographical feature shown the line E-F
(Top of mountain / Conical hill / isolated hill) (1 mark)
- iv. What is the water supply pattern of the given part of the map ? (1 mark)
- v. What is the administration border of the river indicated by no 1 ? (1 mark)

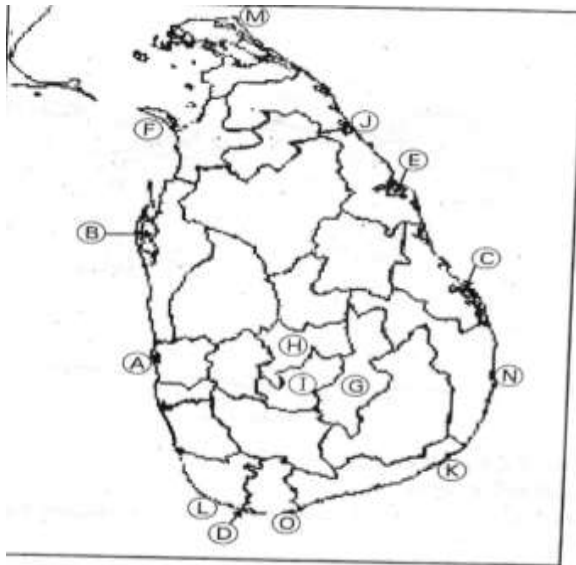
- vi. What is the geographical feature shown by the area indicated by no 2 ? (1 mark)
- vii. What is the geographical feature shown by the area indicated by no 3? (1 mark)
- viii. if the length of the part of the map given is 12 cm and bread this 8 cm, find the area of the map using square kilometers. (1 mark)
- ix. Draw the linear scale (length 12cm) (2 mark)

02. Answer the following questions by studying the given world map



- i. using the letters for island A, B and C shown by the map select the letter shows Sumathra island.
- ii. using the letters for mountains D, E and F marked on the map select the letter which shows rocky mountain.
- iii. using the letters for bays G, h and I marked on the map select the letter which shows the bay of Bengal
- iv. using the letters for rivers J, k and L marked on the map select the letter and which shows the Amazon river
- v. using the letter for seas M, n and O marked on the map select the letter which shows Japanese sea.

03. Answer the questions by using the given Sri Lankan map



- i. Using the letters for lagoons A, b and C marked on the map select the letter which indicate the Negambo lagoon.
- ii. using the letters for bays D, E and f marked on the map select the letter which indicate the bay of Mannar
- iii. using the letters for the areas that tea plantation has been commonly spread G, h and I select the city Niuwara Eliya of which tea plantation has been spread abundantly
- iv. using the letters J, k and l marked on the map select the letter which indicate pulmoidail mineral oves.
- v. using the letters M, n and O marked on the map select the letter which shows "Sangaman kanda"

Part II

02.

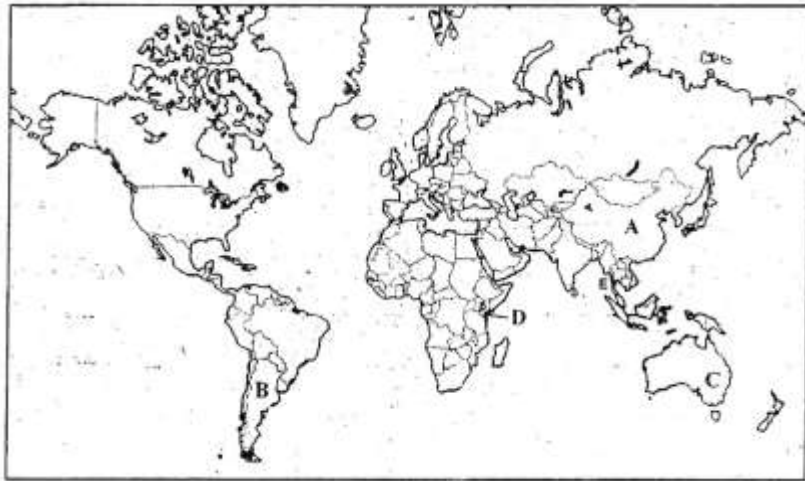
- i. Name the 2 layers belongs to lithosphere (2 marks)
- ii. Write 3 special features of one of the layer that you mentioned in part (i) (3 marks)

iii. (a) Name 2 factors affect for the operation of Biosphere (2 marks)

(b) Name 3 human activities that influence the operation of Lithosphere (3 marks)

03.

i. The following model of world map shows the two countries which cultivate wheat in the world by the letters A and B Name A and B (2 marks)



ii. (a) Name the African country which cultivate tea shown by the letter D. (1 marks)

(b) Write 2 trends associated with tea plantation in the world (2 marks)

iii. (a) Write 2 difficulties associated with tea plantation industry in Sri Lanka. (2 marks)

(b) Write 2 difficulties associated with rubber industry in Sri Lanka (3 marks)

04.

i. Write 2 self-employment industries carried out in Sri Lanka. (2 marks)

ii. Write 2 difficulties associated with self-employment industry carried out in Sri Lanka (3 marks)

iii. Write 3 implementations introduced by the Sri Lankan government to solve above mentioned difficulties in part (ii). briefly describe one of the above mentioned implementation (5 marks)

- 05.
- i. Name 2 fishery industries conducted in Sri Lanka (2 marks)
 - ii. Write 3 difficulties associated with fishery industry in Sri Lanka (3 marks)
 - iii. (a) write 2 problems associated with land consumption of agricultural industry in Sri Lanka (2 marks)
 - (b) Write 3 difficulties associated with productions of agriculture (2 marks)

- 06.
- i. What is called petrc chemical industry? (2 marks)
 - ii. Write 3 productions associated with petro chemical industry (3 marks)
 - iii. Describe 3 problems arises in associated with petro chemical industry (5 marks)

- 07.
- i. Rocks in the world has been categorize according to their origin of birth. Name 2 types of rocks according to it's origin (2 marks)
 - ii. (a) Write example each for above mentioned 2 types of rocks (2 marks)
 - (b)Write 2 uses of rocks (3 marks)
 - iii. (a) Name the type of soil in the districts Ampara and Batichloae (2 marks)
 - (b)Write 2 difficulties faced in conservation of soil and write 2 ways of conservation of soil (5 marks)

- 08.
- i. name 2 energy sources adanduntly used in Sri Lanka (2 marks)
 - ii. Write 3 problems faced in consumption of energy sources. (3 marks)
 - iii. (a) Write 2 things used as bio mass to used as energy sources (2 marks)
 - (b)Explan by using 2 points the importance of conservation of energy sources. (5 marks)