

බස්නාහිර පළාත් අධ්‍යාපන දෙපාර්තමේන්තුව
 மேல் மாகாணக் கல்வித் திணைக்களம்
 Department of Education - Western Province

දෙවන වාර ඇගයීම
 Mid Year Evaluation - 2018

ශ්‍රේණිය } 08
 தரம் }
 Grade }

විෂය } Science
 மெய் }
 Subject }

පත්‍ර } I,II
 வினாத்தாள் }
 Paper }

කාලය } 2 Hours
 காலம் }
 Time }

Part 1

Note

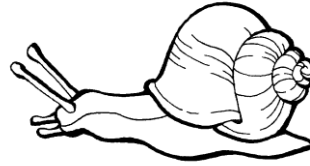
- Answer all questions
- Underline the most suitable answer

1. What is the colour of micro organisms when you observed microbial growth on a wet piece of bread ?

- i. Ash colour ii. Black colour
 iii. White colour iv. Brown colour

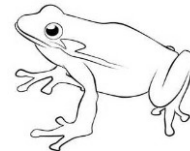
2. Which one is **not** the feature of the group belongs to below given organism.

- i. Soft bodied organisms
 ii. Has a muscular foot
 iii. Possess a radially symmetrical body
 iv. The body is moistened by mucus



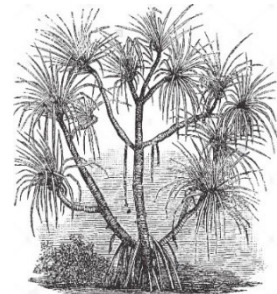
3. Given below is a vertebrate. What is the vertebral group of the organism given below ?

- i. Amphibia ii. Reptelia
 iii. Aves iv. Pisces



4. Which type of roots can be seen in the plant given below?

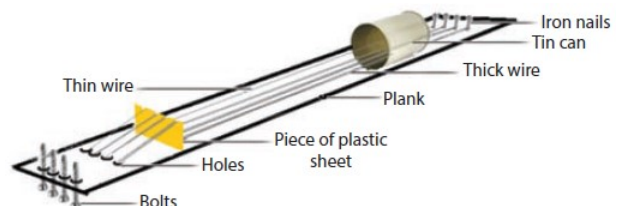
- i. Prop roots ii. Storing roots
 iii. Respiratory roots iv. Stilt roots



5. Given below is a sound generating instrument.

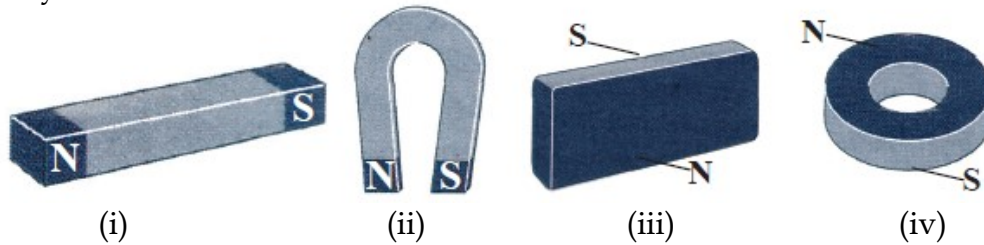
What is the source of generating its sound?

- i. Vibrating membranes
 ii. Vibrating an air coloumn
 iii. Vibrating string
 iv. Vibrating plates

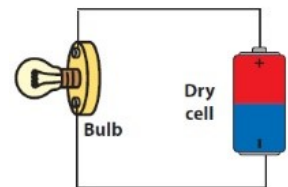


6. A and B are two small and large cups tightened by rubber membranes with similar strength. What can you observe when you tap the two membranes in the same manner?
- A produces more sound than B
 - B produces more sound
 - The sound of A is sharp
 - The sound of A is coarse

7. Given below are four permanent magnets with same magnetic power. When an iron stripe is brought towards them, which magnet attracts the iron stripe very well?



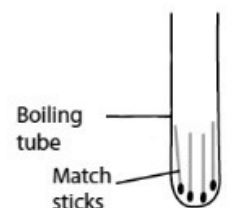
8. What is the correct statement about the flow of electric current through the circuit given below?
- Current flows towards the battery from the bulb.
 - Current flows from the battery towards the bulb.
 - From the positive terminal to the negative terminal.
 - From the negative terminal to the positive terminal



9. Change of state of ice is given here A indicates
- Fusion
 - Vaporization
 - Freezing
 - Condensation



10. What can you observe, when the matches burn, and allowing the boiling tube to cool?
- When the matches burn, it reduces the total mass of the boiling tube.
 - When the matches burn, it increases the total mass
 - When the matches burn, there is no change in the total mass.
 - A physical change has taken place here

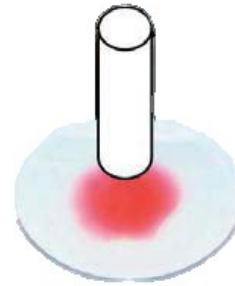


11. Which one is considered as a solid fuel?
- i. Wax ii. Petrol iii. LP gas iv. Diesel
12. Of the factors given below, which ones are essential for the corrosion of iron
- A. Water B. Oxygen C. Salts
- i. A only ii. B only iii. A,B only iv. B,C only
13. When you compare the masses by filling the same density bottle with fresh water, brackish water, brine and tank water, which one gives the highest mass?
- i. Fresh water ii. Brine water
- iii. Brackish water iv. Tank water
14. Out of the following substances which one shows the brittleness
- i. Plastic ii. glass iii. clothes iv. dried skin
15. What is the name given to microbial activity on food high in fat ?
- i. Fermentation ii. Rancidity
- iii. Putrefaction iv. Sour
16. What can you observe, when you float the slice of cork, with the magnetize needle on the basin of water?
- i. XY turns to North and South directions
- ii. XY turns to West and East directions
- iii. XY turns to South - East and North - West directions
- iv. XY turns to North - East and South - West directions



18. When the piece of chalk is placed on the red ink solution in the watch glass, what does it confirm?

- i. The piece of chalk becomes red
- ii. The piece of chalk becomes wet
- iii. Reduces the white colour
- iv. Solid matter is discontinuous

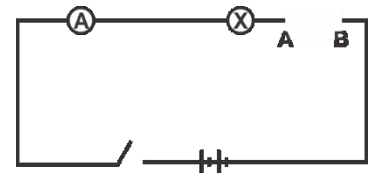


19. What is the frequency of a substance which produces 500 vibration in 10 seconds?

- i. 5Hz
- ii. 50Hz
- iii. 500 Hz
- iv. 5000Hz

20. Of the following which type of substance should be kept at A and B terminals to illuminate the bulb brightly.

- i. Copper wire
- ii. Nicrome wire
- iii. Clip of a pen
- iv. Plastic ruler



Part II

- Answer the first question and 4 other questions

01.

(A) You are provided with a carbon and iron rods

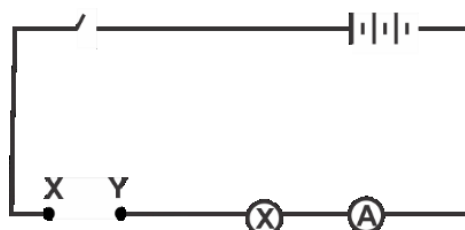
i. Suggest a method to separate these two rods.

ii. Write one use of iron and carbon rod

iron -.....

carbon -.....

iii. Complete the table of the nature of illumination of the bulb, when connecting iron and carbon rods separately to X and Y terminals of the circuit given here.



	illuminate	don not illuminate
Iron rod		
carbon rod		

- (B) i. What is the potential difference of a dry cell ?

- ii. What is the type of energy wasted when illuminating a bulb ?

- iii. Draw a circuit diagram with a voltmeter to measure the potential difference between two ends of the bulb

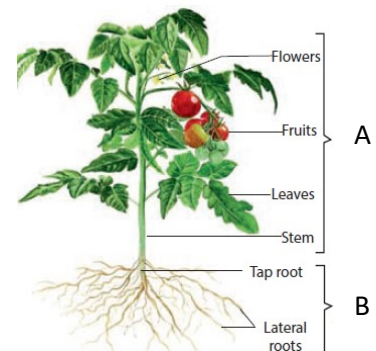
- (C) i. Name the things need to make an electromagnet

- ii. Write a use of electro magnet

- iii. How do you measure the power of electro magnet ?

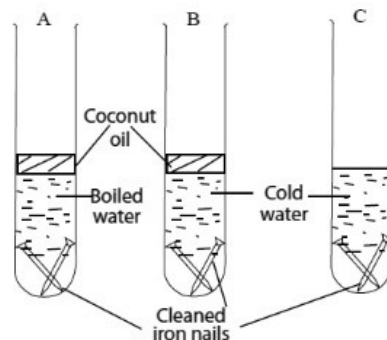
02.

- (A) i. Name the plant parts A and B given in the following diagram.
- ii. What is the part of the plant which is directly responsible for photosynthesis ?
- iii. How does the above mentioned plant part is well adapted for efficient photosynthesis?
- iv. In which environments can we see plants with fleshy leaves.
- v. What is the process of evaporation of water from plants ?



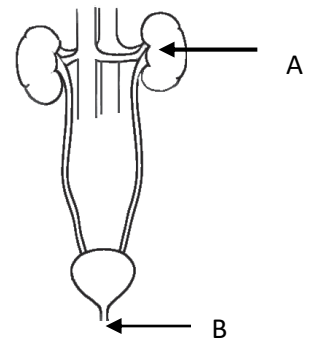
- (B) i. Name 2 raw materials used to produce bio gas
- ii. Name 2 gases produced by combustion of bio gas
- iii. Name the substance given above, which can be identified by using Anhydrous copper sulphate.

03. i. What is meant by corrosion of metal?
- ii. A and B are two test tubes with iron nails to investigate the factors essential for rusting of iron. What is the factor, that doesn't get in test tube A and B ?

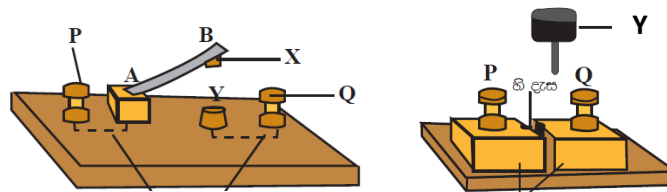


- iii. What is the function of having a layer of coconut oil here ?
- iv. What is the colour of iron rust ?
- v. Write 2 ways of preventing corrosion of iron
- vi. Write a method of removing gas inside a test tube
04. i. Write a list of things you used to produce sound generating instrument
- ii. How does the above mentioned instrument produce its sound ?
- iii. Mention whether the sound produced in the above instrument is a musical note or a noise
- iv. Write 2 uses of Musical therapy?
- v. What is the limit of hearing of sound that human ear can hear ?
05. Spider, Swan, butterfly, snail, snake, leech, star fish, sea anemone, frog
- i. Name vertebrates among above mentioned animals
- ii. What is the group of spider ?
- iii. Name the organism that can be seen only in aquatic environment
- iv. Name the animal which has a soft body
- v. Which organism lead a sedentary life ?
- vi. Name the which animal consists of segmented body ?
- vii. Which animal possess a dry skin with scales ?
- viii. Of the above animals, which one respire by using lungs, wet skin and mouth.
- ix. Draw a dichotomous key using any three animals given above.

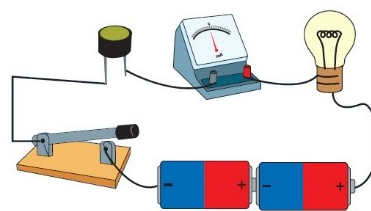
06. (i) Name 2 excretory substances of man
(ii) Name A and B parts
(iii) Write 2 human behaviors that occur kidney stones.
(iv) What is the name given or adaptation according to the changes of body organs external and internal environments?
(v) Which part of the brain important in co-ordination?
(vi) Write functions of the skin.
(vii) Name a diseases associated with excretory system caused by incorrect usage of chemical fertilizers.



07. (i) Name a bulb which is considered as highly efficient than the filament bulb.
(ii) Name the 2 types of keys shown in the below circuit.



- (iii) Name a metal with high electric resistance.
(iv) Write a difference that take place when using an electric resistance in a circuit.
(v) Given below is a circuit with light sensitive resistor.



What is the change that occur when light falls and when dark.

- (vi) Write a strategy to prevent an electronic device from heating.
(vii) Draw a circuit diagram to show a series circuit with two bulbs and a battery