[illegible]

No :- .....

Class :- .....

- Answer all questions.
- Underline the correct answer.

- (01) Which is not a flowering plant,  
(i) rose                      (ii) temple flower (araliya)                      (iii) grass                      (iv) ferns
- (02) Select the group of plants only with the fibrous root system.  
(i) jak, bread fruit, temple flower (araliya)  
(ii) grass, coconut, kithul palm  
(iii) grass, coconut, papaya  
(iv) grass, coconut, temple flower (araliya)
- (03) The function of climbing roots,  
(i) store food                      (ii) support the stem  
(iii) help the stem to climb up                      (iv) absorb water vapour from the atmosphere
- (04) The group of plants only with compound leaves,  
(i) jak, bread fruit, curry leaves                      (ii) curry leaves, mara tree, bread fruit  
(iii) curry leaves, mara tree, kathuru murunga                      (iv) curry leaves, jak, mango
- (05) Three main parts in a flower,  
(i) stamen, pedicel, petals                      (ii) sepals, pedicel, petals  
(iii) pedicel, petals, androecium                      (iv) sepals, petals, gynoecium/androecium
- (06) An instrument which is used to detect static electrical charges,  
(i) gold leaf electroscope                      (ii) Ammeter  
(iii) Galvanometer                      (iv) Capacitor
- (07) An instrument which is used to store static electric charges,  
(i) gold leaf electrocope                      (ii) ammeter  
(iii) galvanometer                      (iv) capacitor
- (08) The unit of measuring electric charges,  
(i) ampere                      (ii) volt                      (iii) Farade                      (iv) joule

- (09) Which is not a source of electricity,
- (i) Galvanometer      (ii) dry cell      (iii) vehicle battery      (iv) Simple cell
- (10) The standard unit of measuring electricity is,
- (i) ampere      (ii) volt      (iii) farade      (iv) joule
- (11) The chemical known as battery acid is,
- (i) diluted nitric acid      (ii) diluted sulfuric acid  
(iii) concentrated nitric acid      (iv) citric acid
- (12) The body organ which produced urea is,
- (i) stomach      (ii) kidneys      (iii) pancreas      (iv) liver
- (13) The water,
- (i) has a definite shape & definite volume  
(ii) has not a definite shape but has definite volume  
(iii) has a definite shape but has not a definite volume  
(iv) has not a definite shape & a definite volume
- (14) Not a vertebrate animal,
- (i) millipede      (ii) tortoise      (iii) snake      (iv) cat
- (15) Select the group of animals only with warm blooded animals,
- (i) frog, cat, tiger      (ii) cat, tiger, dog  
(iii) frog, snake, dog      (iv) snake, tiger, dog
- (16) By acids,
- (i) red litmus turned to blue      (ii) red litmus turned to yellow  
(iii) blue litmus turned to red      (iv) not changing the colour of blue litmus
- (17) The boiling point of water,
- (i) 100°C      (ii) 75°C      (iii) 110°C      (iv) 102°C
- (18) The colour of pH paper,
- (i) blue      (ii) yellow      (iii) red      (iv) green
- (19) The group of animals only with invertebrates,
- (i) man, dog, tortoise      (ii) man, cockroach, beetle  
(iii) tortoise, cockroach, beetle      (iv) butterfly, dragonfly, earthworm
- (20) When two objects with similar charge bring together,
- (i) an attraction occur      (ii) no attraction, no repulsion  
(iii) a repulsion occur      (iv) first attract then repel

(2 x 20 = 40)

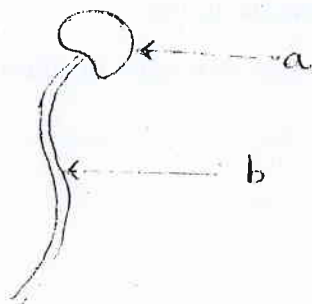
• Answer all questions.

(01) (i) You have prepared a field book as the first term science assignment. Write  $\frac{1}{5}$  parts of plant that you have used to prepare the above book. (15)

(1) .....

(ii) Name the part of a flower given below.

.....

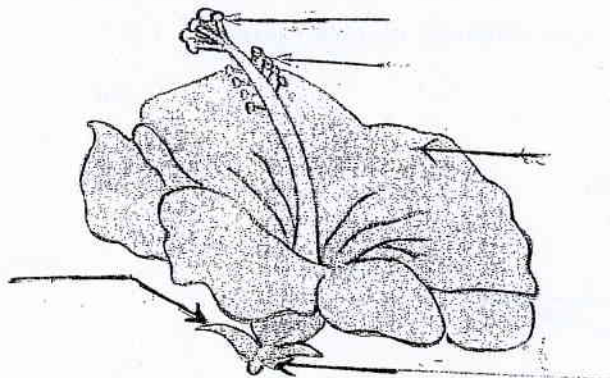


Name a & b parts.

(a) .....

(b) .....

(iii) Name all the parts of the flower given below.



(iv) Some rice grains & green gram seeds were soaked & planted.

(1) Which is the monocot plant from above plants. ( $\frac{1}{2}$ )

.....

(2) Which is the dicot plant from above plants ( $\frac{1}{2}$ )

.....

(v) Write three difference between monocot & dicot plants in the table given below. (15)

	Monocot plants	Dicot plants
(1)	•	
(2)		
(3)		

(vi) Write three methods of propagation of seeds. ( 3 )

- (1) .....
- (2) .....
- (3) .....

(vii) Some plants that you found during a field visit were listed below.

*Centella* (gotukola / *Sonneration* (Kerala), Pepper, pandanus, Orchid,

*Ficus* (nuga), *Mimosa* (Nidikumba)

Answer the questions given below by using the above list of plants.

- (a) A plant with aerial roots. ....
- (b) A plant with respiratory roots ....
- (c) A plant with root nodules ....
- (d) A plant with prop roots ....
- (e) A plant with stillt roots ....

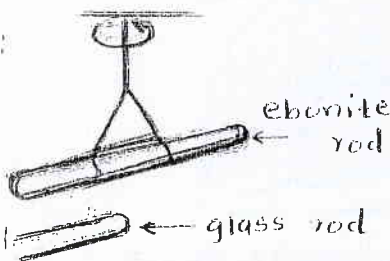
( 5 )

(02) Some materials can attract light objects after rubbing against some other materials.

(i) What are the types of static electric charges. ( 2 )

- (a) .....
- (b) .....

(ii)



What would be the observation when bringing charged ebonite rod towards the charged glass rod. ( 1 )

.....

.....

.....

.....

(iii) Complete the table given below.

	Hanging rod	Rod brought towards	Observations
(1)	glass	glass	
(2)	ebonite	glass	
(3)	ebonite	ebonite	

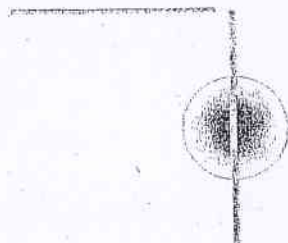
( 3 )

(iv) Write two phenomena in our day today life related with the static electricity. ( 2 )

- (a) .....
- (b) .....



(v)



(a) What would be the observation when bringing another charged drinking straw towards the charged drinking straw in the above diagram. (1)

.....  
.....

(b) What would be the observation when bringing another charged polythene sheet towards the straw in the above diagram. (1)

.....  
.....

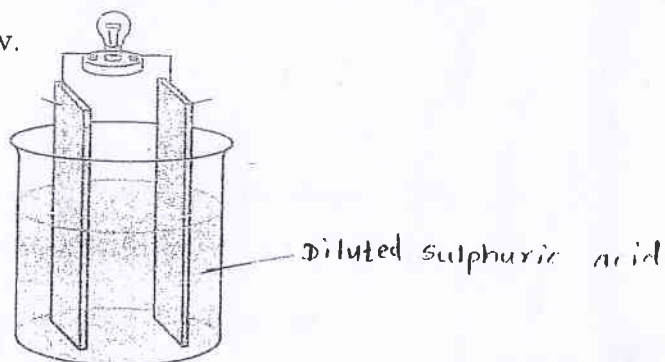
**(03) Electricity is very useful for us to make our lives comfortable**

(i) Write two uses of electricity. (2)

(a) .....

(b) .....

(ii) A diagram of simple cell is given below.



(i) What are the metals used as electrodes? (1)

(a) ..... (b) .....

(ii) Name the positive and negative electrodes? (1)

(a) + electrode ..... (b) - electrode .....

(iii) Write two weaknesses of the simple cell. (2)

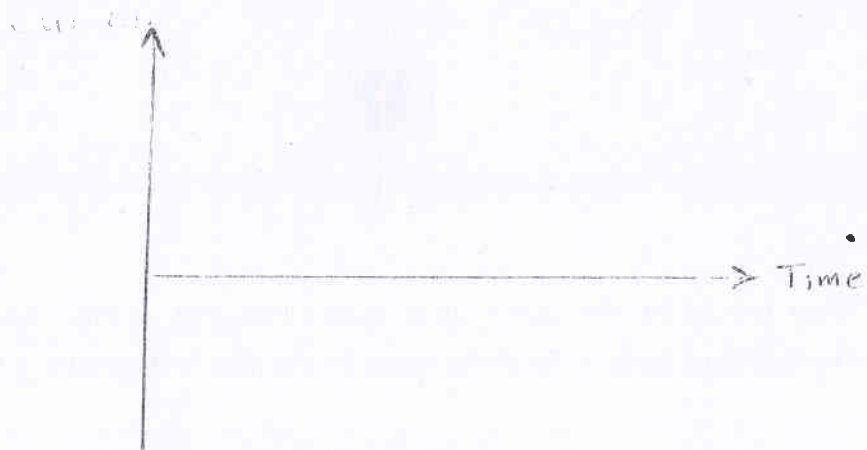
(1) .....

(2) .....

(iv) Write two sources of electricity. (2)

(1) .....

(2) .....



- (i) Plot the graph for the simple current against the time in the above space. (2)
- (ii) What is the type of electricity produced by electrical cells. (1)

.....

**(04) Water is one of the basic needs of man.**

- (i) Write two properties of water. (1)

- (a) .....
- (b) .....

- (ii) Write two uses of water. (1)

- (a) .....
- (b) .....

- (iii) Complete the table given below by considering the solubility with water. Mark with (✓) in the relavant column.

Material	Dissolved well	Dissolved Slightly	Not Dissolved
Sugar			
Tamarind			
Salt			
Kerosene Oil			
Oxygen			

$\frac{1}{2} \times 6 = 3$

- (iv) Write an activity to prove that water has no definite shape. (1)

- (i) .....
- (ii) .....

(v) Complete the sentences with the suitable words. ( 5 )

- (a) ..... is a gas dissolved in water.
- (b) The type of sugar in the sap of the sugarcane plant is .....
- (c) The water is used to cool down machinaries, because water act as .....
- (d) ..... is produced by evaporating sea water.
- (e) Artificial vinegar is made by mixing ..... with water.

8

(05) Water is one of the basic needs of man.

(i) Name two acids used at home?

- (a) ..... (b) ..... ( 2 mark )

(ii) Name two bases used at home?

- (a) ..... (b) ..... ( 2 mark )

(iii) Name a natural substance we found at home?

..... (1 mark)

(iv) (a) Name three natural indicators. ( 3 )

- (1) ..... (2) .....
- (3) .....

(v) Name two acids used in the laboratory. ( 2 )

- (a) ..... (b) .....

(vi) Mention the colour change of the indicators given below. ( 4 )

	Indicator	Colour with acids	Colour with bases
(1)	Red litmus		
(2)	Blue litmus		
(3)	Phenolphthalene		
(4)	Methyl Orange		

(4 marks)

\*\*\*\*

