

සබරගමුව පළාත් අධ්‍යාපන දෙපාර්තමේන්තුව  
சபரகமுவ மாகாணக் கல்வித் திணைக்களம்  
Sabaragamuwa Provincial Department of Education

දෙවන වාර පරීක්ෂණය - 2018  
இரண்டாம் தவணைப் பரீட்சை 2018  
Second Term Test - 2018

11 ශ්‍රේණිය  
தரம் 11  
Grade 11

ඉංග්‍රීසි භාෂාව - II  
ஆங்கிலம் மொழி - II  
English Language - II

පැය දෙකයි  
இரண்டு மணித்தியாலம்  
Two Hours

Name/Index Number: .....

Answer all the questions.

**Test 9:** There is a mistake in each sentence given below. Rewrite the sentences correcting the mistakes. The first one is done for you.

1. The blue whale is the large creature lives on Earth.

The blue whale is the largest creature lives on Earth  
.....

2. Everyone in my class enjoy cricket.  
.....

3. Water rafting is an adventure outdoor activity.  
.....

4. The aircraft disappeared when flying over the Indian Ocean.  
.....

5. The people in Japan are busy and hardwork.  
.....

6. Do you go to the canteen in the interval?  
.....

[Total: 5 marks]

**Test 10:** Select a word from the box which has a similar meaning to the phrases given within brackets and write it in the spaces given. There are three extra words.

proposed, inspired, caused, expected, powerful, selected, destruction,

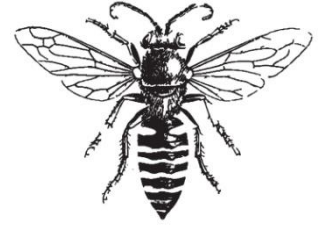
The idea of an organisation of countries was first (1) ..... (made a suggestion) by the German philosopher Immanuel Kant. His idea came to life after World War 1. The war (2) ..... (became a reason) great (3) ..... (causing so much damage). Countries realised how (4) ..... (very dangerous) war was. They were (5) ..... (encouraged by something) to come and work towards peace.

[Total: 5 marks]

**Test 11:** Fill in the blanks with the words given below;

together	in	member	unlike	hatched	such
that	into	male	with	rest	other
after	collect				

The honey bee is a very unusual kind of insect. (1) ..... other insects which live alone, the honey bee lives as a (2) ..... of a community. These bees live (3) ..... in what is known as a bee colony.



The head of the colony is called the queen bee. She is larger than the (4) ..... of the bees. Her main task (5) ..... the colony is to lay eggs. Most of the (6) ..... bees are the worker bees. These bees (7) ..... nectar and pollen from flowers. The nectar (8) ..... is carried by the worker bees is deposited on the hive and then converted (9) ..... honey. The worker bees also help look (10) ..... the young bees. As soon as the eggs are (11) ..... ,the worker bees feed the young bees (12) ..... pollen and nectar.

The third type of bee found in the colony is the drone or (13) ..... bee. The main task of (14) ..... a bee is to mate with a new queen. The queen bee has a life span of about three years.

[Total: 7 marks]

**Test 12:** A man wanted to sell his scooter. Imagine that you met him one day. These are the statements he made to describe it.

1. "It's a brand-new scooter."
2. "I bought it from Kegalle last month."
3. "This scooter always starts with the first kick."
4. "My company is going to give me a new car."
5. "I will sell it for Rs. 200000.00."
6. "You can pay me cash."



Now report what the young man said. The first one is done for you.

1. The young man said that it was a brand-new scooter.
2. He .....
3. ....
4. ....
5. ....
6. ....

[Total: 5 marks]

**Test 13:** Read the following notice and answer the questions given below.

**Students Volunteers Needed!**

Uthuwankanda Maha Vidyalaya will hold a drama festival in the school auditorium on Saturday the 4<sup>th</sup> of August from 2.00 p.m to 5.00 p.m. A number of professional actors, actresses and artists will take part in this festival.

The tasks assigned to the volunteers

Task	Time	Date
Designing posters	1.30 p.m – 5.00 p.m	30 <sup>th</sup> July
Setting up auditorium	12 noon – 4.00 p.m.	3 <sup>rd</sup> August
Helping performers	11.00 a.m. – 1.30 p.m.	4 <sup>th</sup> August
Welcoming guests	1.45 p.m. – 2.15 p.m.	4 <sup>th</sup> August
Cleaning up auditorium	5.00 p.m. – 6.30 p.m.	4 <sup>th</sup> August

Interested students should talk to Ms.Ranathunga for more information. The students who would like to come and help at this festival should bring a written permission from their parents or guardians.

1. At what time will the festival begin?

.....

2. Who will participate in the festival?

.....

3. What will be done the day before the festival?

.....

4. Who are asked to speak to Ms.Ranathunga?

.....

5. What must the students who would like to help make this event a success should bring?

.....

[Total: 5 marks]

**Test 14:** Write one of the following.

a) Your school co-operative society wants to buy stationery items to be sold at the school co-operative shop. As the secretary of the society, write a letter to a dealer inquiring about the supply of stationery. Include the following.

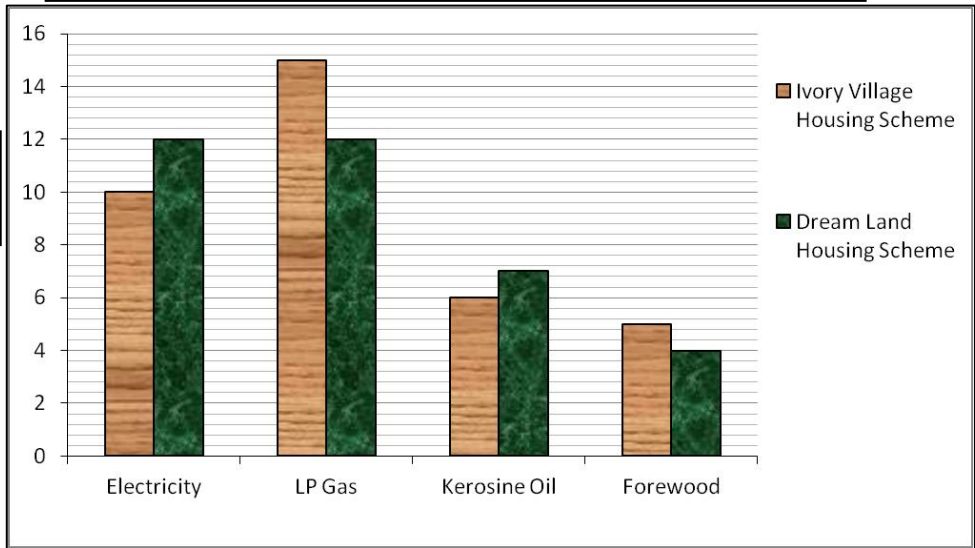
- Mention the purpose
- Give a list of stationery required (example: pens, books)
- Request a reasonable discount

**OR**

b) The following bar graph shows the families of two housing schemes using different fuel for cooking. Study it and write a description in about 100 words.

highest, majority, less than, most popular,  
almost equal, least, higher than, least popular

Number of families



.....

.....

.....

.....

.....

.....

.....

.....

.....

.....

.....

.....

.....

.....

.....

.....

.....

.....

.....

.....

.....

.....

.....

[Total: 10 marks]

**Test 15:** Read the text and answer the questions.

When I got to the airport, I learnt that the plane from Cairo, on which my brother was travelling, had been delayed at Paris with engine trouble and was expected to be about an hour late. As a rule I can pass the time quite happily, watching the planes land and take off, but that evening I had a headache which I thought that the noise of the engines might make worse. I decided, therefore, to walk around to make the time pass quickly.

First of all, I went back to the place where I had left my car to make sure that all the door were locked. The walk in the fresh air did me good, for I felt slightly better as I entered the main airport building again. I made my way to the restaurant, where I ordered a cup of black coffee. As I stood drinking this at the counter, I studied the faces of people around me. Some passengers were obviously anxious about the time, and kept looking at their watches; others checked to see that they had tickets, passports and money. Where there was a group of people, it was easy to tell which one was about to leave. He was the object of everyone's attention and looked either very happy or sad at the thought of departure. There was one woman who burst into tears as she said goodbye to the relatives or friends who had come to see her off.

When I had finished my coffee, I went along the bookstall, where I bought a couple of magazines, both of **them** about travel, which would help to make time pass pleasantly. Then I went into one of the waiting-rooms and made myself comfortable in a big armchair. I had hardly had time to open one of my magazines when someone came up and put his hand on my shoulder. It was an old friend, who was just about to leave on a business trip to South America. Since we had not seen each other for a long time, **we** found plenty to talk about until the arrival of my brother's plane from Paris was announced.

1. Say whether the following statements are true or false by writing 'T' or 'F' against each of them.

- a) Writer went to the airport to go to Cairo. [.....]
- b) Writer got the headache because of the noise of the engines. [.....]
- c) Writer read one of the magazines. [.....]
- d) After finishing coffee, writer went to the bookstall. [.....]

2. How does the writer usually pass time in the airport?

.....

3. Why didn't he watch the planes land and take off?

.....

4. Underline the correct answer.

'I had hardly had time to open one of my magazines', means

- a) Writer had enough time.
- b) Writer had no time.
- c) Writer had too much time.

5. Underline the most suitable word that completes the following sentence.

People who were in the restaurant had different .....

- a) emotions                      b) watches                      c) tickets

6. Find a word/phrase from the passage which has the same meaning as the following

- aggravated - .....
- marginally - .....

7. What do the following words in the text refer to

- a) 'them' in line 2 of the 3<sup>rd</sup> paragraph - .....
- b) 'we' in line 6 of the 3<sup>rd</sup> paragraph - .....

[Total: 8 marks]

**Test 16:** Write on one of the following. Use about 200 words.

(a). Write an essay on 'Write an essay on 'Let's grow our own food'. You may include the following.

- Advantages of growing food by ourselves
- How we can use spaces available
- How to support the society/country

OR

(b). Write an article to a newspaper on

'Say 'No' to polythene'. You may include the following.

Environmental issues - accumulates in the environment as it is non decaying

- blocks waterways and sewage systems
- harmful to animals
- emit harmful gases when burnt

Solutions - reduce, reuse and recycle

OR

(c). Write a folktale which you have heard or read. It should carry a moral.

OR

(d). Complete the dialogue between Sulari and Kasuni. They are concerned about the safety on roads.

Sulari : Hi, Kasuni! What happened? You look very sad today!

Kasuni: You are correct, Sulari. I saw an accident while I was walking to school this morning.

Sulari : .....

