

# ANSWERS

1.
  - 1) C Major
  - 2) A minor
  - 3) a. Gradually getting softer  
b. Gradually getting louder
  - 4) From 5th bar
  - 5) E.



- 6) Minor 3rd



IVb

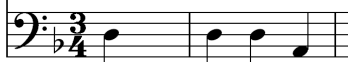
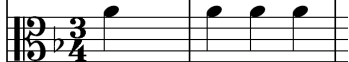
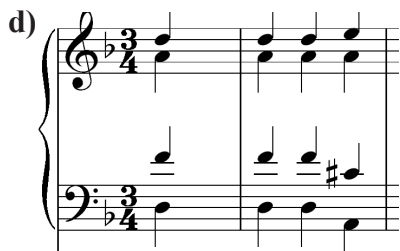
- 8)  $\frac{6}{8}$

- 9) Modern Period

- 10)



## PART -A

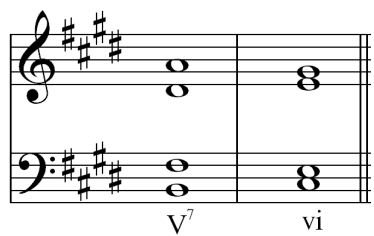
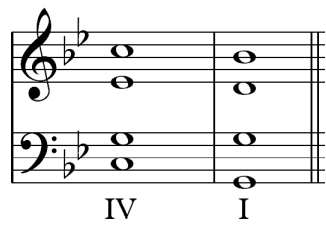


3. a) 

b) 

c)

A	B
(a)	(iii)
(b)	(iv)
(c)	(ii)
(d)	(i)

4. a. (i)  (ii) 

- b) i) Major  
 ii) Minor  
 iii) Major  
 iv) Minor

c. 

5. a.

	Type of work	Composer	Nationality	One composition
(i)	Symphonies	F. J. Haydn	Austrian	Surprise symphony/ Tragic symphony etc.
(ii)	Lied	F. Schubert	Austrian	Erlking, The Trout
(iii)	Oratorios	G.F. Handel	German	Messiah
(iv)	Operas	L. V. Beethoven	German	Fidelio

b) i) Waltz –

Waltz is a dance in Triple time.

Example for Waltz, The Blue Danube Waltz Johann Strauss II

ii) Opera –

A music play set to music usually for solo voices and chorus and orchestra performed on stage with costium and scenary. it also includes Recitatives and Arias.

Examples for Operas, Rianaldo by G.F. Handel, The Magic Flute- Mozart

iii) Overture – An overture is usually an orchestral introduction to an Opera

Examples for overtures, William Tell Overture -By Rossini

iv) Concerto - A musical composition for a solo instrument or instruments accompanied by an orchestra, especially one conceived on a relatively large scale.

Examples for concertos : Violin Concerto in E major by J.S.Bach

c) i) String section

Double bass

ii) Woodwind section

Bassoon

6. a) Bhupali / Bilawal

ii) Waramathi / Rajathi raja

iii) Gajaga/ Thuranga/ Ukusa

iv) Mihikatha Nalawala/ Diyagoda Sama Thana etc.

b) Two violins, viola and cello

c) A – Principal theme

B – Episode 1

A – Principal theme

C – Episode 2

A – Principal theme

Ex: Fur Elise / Rondo alla turka / Humoresque

d) i) Ternary Form

It consist of 3 sections. The second section is called an Episode which is contrasted in key and style to the principal theme.

A – Principal theme in Tonic

B – The Episode

A – An exact statement of A. Beginning and ending in Tonic

Coda – Optional

Ex : Ash grove, Three blind mice , Drink to me only

ii) Binary Form – It has 2 divisions. Aslo known as 2 part form, AB form, simplest form etc.

A- Begins in Tonic and modulates to the Dominant

B- Begins in the Dominant ( Which the section A ended) and modulates to the Tonic

Ex: Folk tunes/ Nursery rhythms

iii) Variation Form – The basic musical idea is repeated over and over and is changed each time.

A theme                  Variation 1          Variation 2          Variation 3

Change of melody, rhythm , harmony , accompaniment, dynamics or tone color may be used to give variety.

Ex: Mozart Sonata A.K.331

Harmonious Blacksmith

Trout Quintet

7. a)

<b>B</b>	He is the concert master
<b>A</b>	All players follow his directions
<b>E</b>	Non transposing double reed instrument
<b>H</b>	Definite pitched percussion instrument
<b>D</b>	Smallest and highest pitched instrument
<b>G</b>	Transposing brass instrument commonly used in school bands
<b>C</b>	Grandfather of the string family
<b>F</b>	Fagotto is the Italian name for this

b) National Youth Orchestra  
Symphony Orchestra of Sri Lanka

c) Mary Poppins, Lion King, Sound of Music, Singing Nun,  
My Fair Lady, Wizard of Oz

d) **MIDI** stands for Musical Instrument Digital Interface. MIDI is simply a standard way of connecting one keyboard with another or several instruments altogether. Ex. MIDling up a digital piano to a digital synthesizer.

**Guitar**- It is a fretted/ plucked string instrument. The parts of the Guitar- body, frets and strings. There are different types of guitars. a) Acoustic b) Electric c) Flamenco d) 12 string guitar.  
Usually the guitar consists of 6 strings. - E A D G B E

**Getaberaya** - A sri Lankan drum used for traditional Kandyan dances. it has two faces played with both hands. The other names given to this instrument - magul Beraya, udarata Beraya

**Baila** - Baila is originally a dance for Kaffringna music. It has a Portuguese origin . Today Baila is a form of music in  $\frac{6}{8}$  popular in Sri Lanka. Baila songs are played during parties. popular Baila singers are M.S. Fernando, Wally Bastian, Desmond de Silva etc.

**J.S. Bach** - Baroque period, German composer, born in the year 1685. He came from a family of musicians. He became the church organist and later appointed as the court organist and court conductor to Prince Leopold. He wrote music in every known form except Opera. His famous works were 48 preludes and Fugues, Anna Magdalene Note Book, 6 Brandenburg Concertos, Christmas oratorio, St. John's Passion and St. Mathew's Passion