



G.C.E. A/L Examination July - 2017

Conducted by Field Work Centre, Thondaimanaru
In Collaboration with
Provincial Department of Education Northern Province

Grade :- 12 (2018)

General Information Technology

Marking scheme

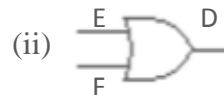
Part I

- | | | | |
|-------|-------|-------|-------|
| 1) a | 11) d | 21) a | 31) b |
| 2) c | 12) d | 22) c | 32) b |
| 3) b | 13) b | 23) b | 33) c |
| 4) d | 14) b | 24) c | 34) c |
| 5) c | 15) d | 25) b | 35) d |
| 6) d | 16) c | 26) b | 36) c |
| 7) c | 17) c | 27) c | 37) d |
| 8) c | 18) c | 28) d | 38) a |
| 9) d | 19) c | 29) c | 39) c |
| 10) c | 20) d | 30) c | 40) a |

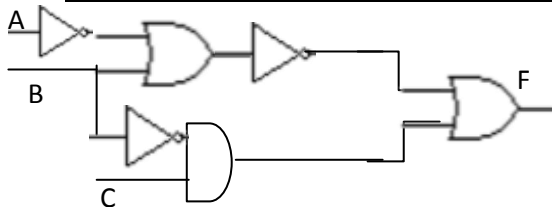
Part II

(1) (a) (i)

| E | F | D |
|---|---|---|
| 0 | 0 | 0 |
| 0 | 1 | 1 |
| 1 | 0 | 1 |
| 1 | 1 | 1 |



(b)



(c)

- i) CD
- ii) Hard Disk
- iii) Magnetic tapes

(2) (a) i) WWW, FTP, e-mail, Search engines, Remote Access

ii) Computer/Smart phone/tablet/ipad, ISP, Web browser, Modem/Router

iii) Mozilla firebox, Grome, Internet Explorer, Safari, opera (suitable answers)

iv) “BCC” stands for “Blind carbon copy”. This is similar to the CC: feature, except that BCC: recipients are invisible to all of the other recipients of the message.

- (b) i) inexpensive, often available in existing phone system, well tested and easy to get
- ii) Data and information sharing, Resource sharing, Software sharing, Reliable data storages
- iii) Network topology is the pattern of connection in designing of computer network.
Examples:- bus, star, ring, mesh, tree

(3) (a) (i) The primary purpose of this is to recover data after its loss, due to data deletion or corruption

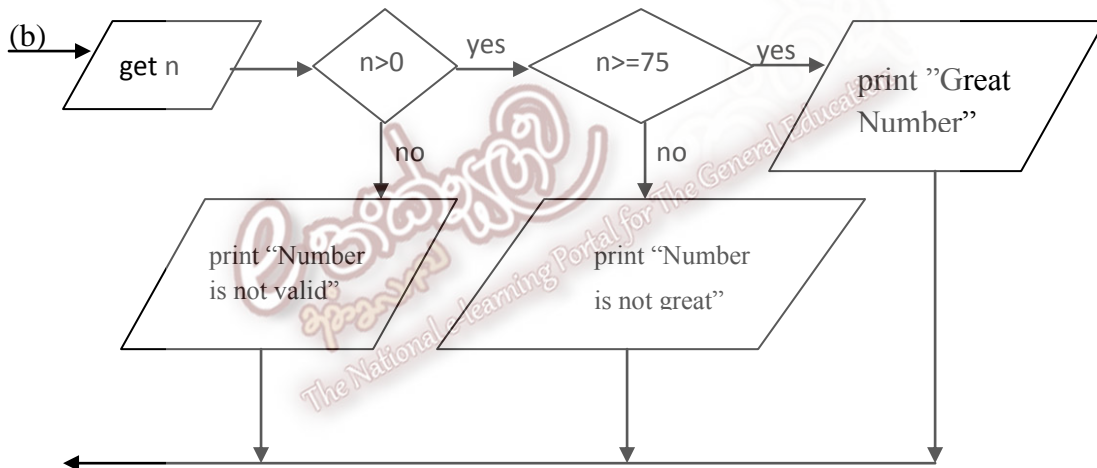
(ii) This converts plain text or other data into a form that is unreadable by humans.

(b) The digital divide is a division in the world population between those who are with and without access to ICT, knowledge of ICT and understanding of the opportunities presented by ICT. It consists of an infrastructure gap and knowledge gap

(c) MRI, CAT, EEG Machine, ECG Machineetc

(d) Carpel tunnel syndrome is the feeling of a numbness and pain in the fingers. The pain arises due to the pressure exerted on the wrist. Incorrect use of the key board and the mouse or placing them in the incorrect positions is reasons for the syndrome.

(4) (a) Sequence, Selection Repetition



(c)

| | | | | |
|-------|---|----|----|----|
| x | 6 | 4 | 2 | 0 |
| c | 8 | 14 | 18 | 20 |
| ouput | 8 | 14 | 18 | 20 |

(5) (a) (i) 5 (ii) 14 (iii) 2 (iv) 1, 3 (v) 9 (vi) 16 (vii) 4 (viii) 18 (ix) 10

(b) (i) Title bar (ii) Zoom (iii) transition

(6) (a) (i) =SUM(B4:E4) (iii) =MIN(B4:B7) (iv) =MAX(B4:B7)

(ii) Select the cell F4, Click copy button, Select the cell range F5:F7

Click Paste icon (give marks for suitable answers)

(v) =SUM(B4:B7) (vi) Bar chart/ Column Chart

(b) (i) if a field of one table can be used to uniquely identify records of another table. In Marks Table Stid is foreign key.

(ii) one to many (iii) S001, S002, S003