

Answer all the questions

Read the questions carefully. Select the most suitable answer.

- Which of the following is true?
 - The first generation computers were based on transistors.
 - UNIVAC belongs to first generation of computers.
 - Ada Lovelace is the inventor of ENIAC.
 - Joseph Jacquard introduced the punch card system.
- Which of the following is a component of a central processing unit?
 - Power supply unit
 - ALU
 - RAM
 - ROM
- Which of the following is the **incorrect** statement with respect to computers?
 - Gottfried Leibnitz developed Pascaline.
 - Vacuum tubes are used in microprocessors.
 - ICs consume less power than the transistor circuits.
 - Analytical engine was based on punch card system
- The binary equivalent of 163 is
 - 10100111
 - 10100011
 - 10110111
 - 01111011
- The hexadecimal number A8 has the decimal value equivalent to
 - 127
 - 256
 - 283
 - 168
- The minimum number of bits required to store the hexadecimal number 1A3 is
 - 12
 - 9
 - 5
 - 7
- 124 and 457 can be represented by
 - $7C_{16}$ and $1C_8$
 - 714_{16} and 711_8
 - 174_8 and $1C9_{16}$
 - $111\ 1100_2$ and 147_8
- Which of the following is not an optical media device?
 - CD
 - Blue -ray
 - Hard disk
 - DVD

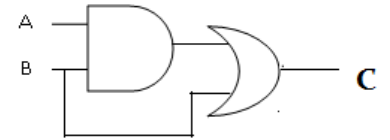
9. Select the operation represented by the following truth table:

- (1) OR (3) AND
 (2) NOT (4) XOR

Input 1	Input 2	Output
0	0	0
0	1	1
1	0	1
1	1	1

10. Which of the following is incorrect if $A = 1$ and $B = \bar{A}$ in the given logic circuit?

- (1) $C = 0$ (3) $A \cdot B = 0$
 (2) $B = 1$ (4) $B = 0$



Questions from **11 and 12** are based on the following worksheet.

11. The cell O33 contains the formula =O31*O\$32. What is the value displayed If we copied this formula in to cell O35?

- (1) 32
 (2) 63
 (3) 9
 (4) 16

	O	P	Q	R	S
30					
31	7	8	9		
32	3	4			
33	21				
34					
35					
36					
37					
38					

12. The cell Q31 contains the formula =O31+P31 - 6 .When we copy that formula into Q32 it will be displayed as

- (1) =P32-O32 - 6 (3) =O31+P31 - 6
 (2) =O32+P32 - 6 (4) =O33 -P33 - 6

13. Browsing internet to get information belongs to

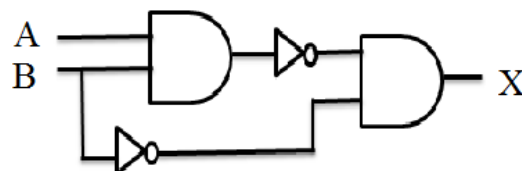
- (1) Half-Simplex mode (3) Full-Duplex mode
 (2) Simplex mode (4) Half-Duplex mode

14. What is incorrect about the IP address of a device?

- (1) It is usually represented in dotted decimal notation.
 (2) An IP address has 32-bytes.
 (3) It is a unique identifier for a computer or device on a network.
 (4) It consists of four bytes.

15. The correct Boolean expression for the X in the following circuit is

- (1) $(\bar{A} + \bar{B}) \cdot \bar{B}$
 (2) $(\bar{A} \cdot \bar{B}) + \bar{B}$
 (3) $(\bar{A} \cdot \bar{B}) \cdot \bar{B}$
 (4) $(\bar{A} + \bar{B}) \cdot \bar{B}$



16. Which of the following function keys activate the spell checker, slide show and Help respectively?

- (1) F9 ,F12 and F1
- (2) F7 ,F5 and F1
- (3) F7,F8 and F9
- (4) F5 , F1 and Shift + F7

17. is not an open source web editor.

- (1) Kompozer
- (2) Frontpage
- (3) ckseditor
- (4) Bluegriffon

18. Internet uses

- (1) Packet switching
- (2) Telephone switching
- (3) Circuit switching
- (4) Telex switching

19. Which of the following is not a service of the Internet

- (3) WWW
- (4) Remote access
- (3) E-mail
- (4) HTML

Questions **20 to 22** are based on the given address typed into the address bar of a web browser.

<https://www.bargainbooks-r-us.co.uk/index.htm>

20. The domain name of the given address is

- (1) https
- (2) www.bargainbooks
- (3) bargainbooks-r-us.co.uk
- (4) us.co.uk/index.htm

21. What is incorrect about index.htm?

- (1) It is the requested web page
- (2) It is the requested name of the file
- (3) It is the URL
- (4) It is the home page of the web site

22. Which of the following is incorrect about the given address?

- (1) This is an encrypted web site.
- (2) This site should not be used to send data.
- (3) It uses the secure version of HTTP.
- (4) https and http are protocols.

23. Which of the following statements are true?

- A.** A step by step description of solving a program is known as an algorithm
- B.** Algorithms can be represented only by using flow charts.
- C.** A pseudocode is a textual representation of an algorithm.

- (1) A and B only
- (2) B and C only
- (3) A and C only
- (4) All are correct

24. Which of the following statements are **true**?

- (1) Machine languages execute programs slower than high level programming languages
- (2) First generation programming languages are machine dependent.
- (3) Machine dependency is a feature of high level programming languages
- (4) Assembly language does not need a translator.

25. Which of the following statements are correct?

- A.** HTML is a computer language.
- B.** In order to write HTML we need an internet connection.
- C.** To make a list of items from A to E, tag should be used.

- (1) A only
- (2) B only
- (3) C only
- (4) All of the above

26. What is incorrect about identifiers in Pascal language?

- (1) Reserved words cannot be used as identifiers.
- (2) They should start with an English letter.
- (3) They are case sensitive.
- (4) Space is not allowed in identifiers.

27. is not a data type in Pascal language.

- (1) char
- (2) Int
- (3) real
- (4) boolean

28. When $7 + 25/5 * 7 \text{ MOD } 3$ is evaluated according to operator precedence the answer is

- (1) 1
- (2) 7
- (3) 21
- (4) 4

29. What is the first output of the following code segment?

- (1) y is 0
- (2) y is -1
- (3) y is 1
- (4) y is 3

```
x = 0
y=2
while x = < 4
    x = x + 1
    y = x-2
print ("y is", x)
```

30. Which of the following gives a correct matching of the contents of Column A with those of Column B when we consider school as a system?

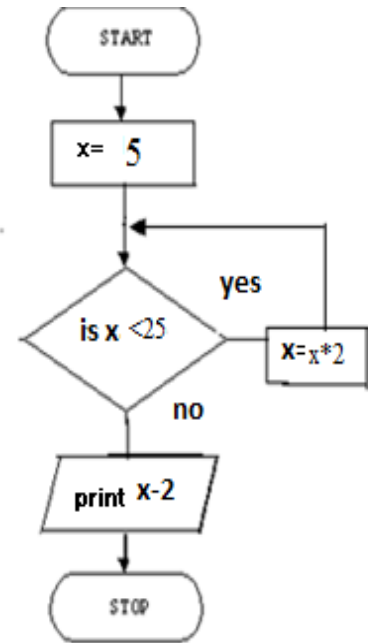
A	
p	input
q	output
r	process

B	
i	Good citizens.
ii	children
iii	All activities done in school

- (1) (p-i),(q-ii),(r-iii)
- (2) (p-ii),(q-i),(r-iii)
- (3) (p-iii),(q-i),(r-ii)
- (4) (q-iii),(r-ii),(p-i)

Consider the given flow chart to answer the questions **31 to 33**.

31. Which of the following represents process, decision and output respectively?
- (1) $X=5, X=X*2, \text{ Is } X > 25$
 - (2) $X=X*2, \text{ Is } X < 25, \text{ print } X-2$
 - (3) $\text{ Is } X > 25, X=X*2, \text{ print } X-2$
 - (4) $X=X*2, X=5, \text{ print } X-2$



32. What is the output of the flow chart?
- (1) 20
 - (2) 40
 - (3) 38
 - (4) 10
33. The most suitable structure to implement the above flow chart is to use a
- (1) While loop
 - (2) For loop
 - (3) case
 - (4) until loop

Questions **34 to 36** are based on the Book table.

Book table

ISBN	Title	Numpages	Price
2342	DigitalDesign	245	200
2540	E commerce	110	400
2367	Web design	455	500
1345	E commerce	782	150
2343	Networking	643	275

34. Most suitable data types for the fields ISBN, Numpages and Title are
- (1) Text, Text, Text
 - (2) Number, Text, Text
 - (3) Number, Text, Text
 - (4) Text, Number, Text
35. The primary key of Book table is
- (1) Title
 - (2) Price
 - (3) ISBN
 - (4) Numpages
36. Number of fields in the Book table is
- (1) 6
 - (2) 3
 - (3) 4
 - (4) 5

37. Which one of the following statement is correct?
- (1) Ctrl + M can be used to create a new presentation.
 - (2) Hyperlinks cannot be inserted in slides.
 - (3) Ctrl + Z will undo the last action we perform
 - (4) Ctrl + Home brings you to the next slide in your presentation

38. Which one of the following statement is incorrect regarding health hazards related to ICT?

- (1) The computer keyboard should be lower than the elbow and top of monitor at eye level.
- (2) Any repetitive movement can result in a health problem called CVS.
- (3) Looking away from the monitor at regular intervals will prevent eye strain
- (4) Should use wrist-rests to support the wrists while typing to prevent RSI.

39. Which one of the following statement is **correct** about the Most Significant Bit of a number?

- (1) MSB is the value in the right extreme in a whole number.
- (2) It is the value which is not zero, in the left extreme in a whole number.
- (3) MSB is the value in the left extreme in a decimal number.
- (4) MSB is the value which is zero, in the left extreme in a whole number.

40. Which of the following statement is **incorrect** about harmful software and resultant damages?

- (1) Spam is unauthorized e mail.
- (2) Adware misdirects users to different web sites.
- (3) Bots are used to collect personal information.
- (4) Trojan horse does not spread by itself.