



G.C.E Ordinary Level | අ.පො.ස. සාමාන්‍ය පෙළ | 2023(2024)

අනුභූරු ප්‍රශ්න පත්‍රය
மாதிரி வினாத்தாள்
Model paper

Geography

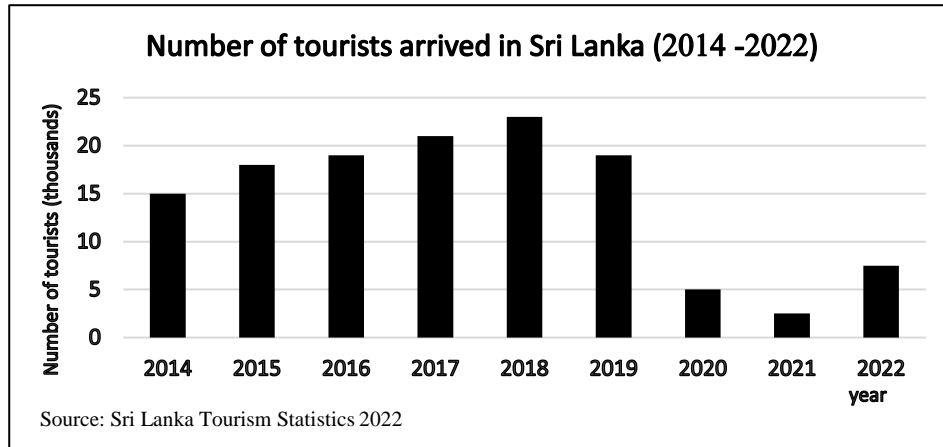


Question Paper I, II | ප්‍රශ්න පත්‍රය I, II | (English Medium)

National Languages and Humanities Branch

- Use the graph given below to answer the questions 16-19.

The number of tourists arrived in Sri Lanka in 2014 – 2022 is shown in the graph below.



- The highest number of tourists visited in Sri Lanka in
- The least number of tourists had arrived in
- The total number of tourists arrived in Sri Lanka after 2019 is
- The arrival of tourists was equal in the years and

- There are two columns as A and B for the questions 20-25. Match the information in B with the facts in A to the given order and write the correct number that shows the correct order of matching.

20.

'A'	'B'
Type of forest	Features
1. Conifer forests	A. No clear layers
2. Tropical rain forests	B. Needle shape leaves
3. Temperate forests	C. High biodiversity
	D. Slow growth of plants
1. ABC 2. ACD 3. BCA 4. DBA	(.....)

21.

'A'	'B'
Area	Protected area
1. Knuckles	A. National parks
2. Ritigala	B. Sanctuaries
3. Anawilundawa	C. Forest Reserves
	D. Strict Nature Reserves
1. ABC 2. ADC 3. CAB 4. CDB	(.....)

22.

'A'	'B'
Hazard type	Hazard
1. Geological hazards	A. Tsunami
2. Climatic hazards	B. Epidemics
3. Biological Hazards	C. Earthquakes
	D. Droughts
1. BAD 2. CDA 3. CDB 4. DAB	(.....)

31. Which answer contains a natural factor that contributes to increase global warming?
1. Animal husbandry
2. Nuclear experiments
3. Sunspots
4. Industrialization (.....)
32. A main criterion that is used in measuring the Human Development Index.
1. Life expectancy at birth
2. Maternal mortality rate
3. Infant mortality rate
4. Aging population (.....)
33. A special characteristic of red yellow podzol soil,
1. Mainly distributed in Ampara and Batticaloa districts
2. More suitable for cultivation of vegetable and grass
3. Spread over river valleys and plains
4. Spread in the low country wet zone (.....)
34. According to the central bank report of Sri Lanka in 2012, which crop from the following earned the highest export income?
1. Coconut 2. Tea 3. Spices 4. Rubber (.....)
35. Across which river was 'Senanayake Samudraya' constructed?
1. Walawe 2. Kumbukkan
3. Galoya 4. Kelani (.....)
36. Select the pair of symbols that is indicated in yellow in colour in 1:50000 map of Sri Lanka.
1. Tea and other roads 2. Main Road and rubber
3. Home Garden and dam 4. Other roads and home gardens(.....)

• Study the pairs A, B, C and D given below to answer the questions from 38-40.

A - 1. Deaths
2. Natural growth

B - 1. Altitude
2. Atmospheric pressure

C - 1. Usage of chemical fertilizer
2. Environmental pollution

D - 1. Literacy
2. Aging population

37. Which pair causes a decrease in the first to decrease in the second and an increase in the first to increase in the second?
1. A 2. B 3. C 4. D (.....)
38. Which pair will produce negative impact even if the increase of the first one results in the decrease of the second one?
1. A 2. B 3. C 4. D (.....)
39. The pair in which a decrease of the first one causes the increase of the second one is shown by,
1. A 2. B 3. C 4. D (.....)
40. Which pair of topics does not show any relationship between each other,
1. A 2. B 3. C 4. D (.....)

(c) Study the map of Sri Lanka to answer the questions provided. Use the column next to the map to write answers.

Refer to the letters on the map of Sri Lanka and select the correct letter out of the three letters given at the end of each statement to answer the questions (i) - (v). Write the answers in the column next to the map.

- i. 'Bombuwala', A paddy research institute - (G, H, I)
 ii. 'Bogala', the graphite mine - (A, B, C)
 iii. 'Solar Universe', the first solar power station of Sri Lanka - (D, E, F)
 iv. Port city - (O, P, Q)
 v. The district in which the new land area was introduced for rubber cultivation - (L, M, N)
 (5 marks)

Part II

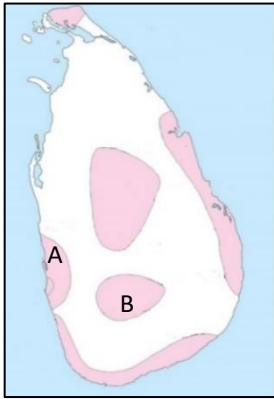
2. (i) Define atmosphere. (2 marks)
 (ii) State **three** salient features of troposphere. (3 marks)
 (iii) a) Write **two** human activities that cause atmospheric pollution. (2 marks)
 b) Suggest **three** measures to minimize the impacts of the human activities you mentioned above. (3 marks)
3. (i) Name **two** none-Asian countries that cultivate tea (2 marks)
 (ii) State **three** salient features of plantation agriculture. (3 marks)
 (iii) a) Write **two** strategies followed by different countries in the world to increase tea production. (2 marks)
 b) Write **three** benefits of tea production to the economy of Sri Lanka. (3 marks)
4. (i) Name the **two** continents where most of the world population lives. (2 marks)

Age group	%
Young dependents	25.8
Labour force	62.0
Older dependents	12.2

Gender	%
Male	48.5
Female	51.5

- (ii) According to census data in 2012, state **three** features of the population structure of Sri Lanka. (3 marks)
 (iii) State **three** problems of aging of population and explain **one** of them in brief. (5 marks)
5. (i) Name **two** leading countries/zones in the production and trade of electronic industry in 2008 - 2013. (2 marks)
 (ii) Write **three** salient features of the electronic industry of the world. (3 marks)
 (iii) a) Write **two** problems in the usage of electronic equipment. (2 marks)
 b) State **two** trends of electronic industry in Sri Lanka and explain **one** of them in brief. (3 marks)

6.



- (i) Name the **two** tourist zones denoted by A and B on the map. (2 marks)
- (ii) State **three** problems of tourist industry in Sri Lanka. (3 marks)
- (iii) State **three** trends of tourist industry in Sri Lanka and briefly explain **one** of them. (5 marks)

7. (i) Write the names of cyclones that occur in following two areas.

A) In the Indian ocean around Bay of Bengal

B) In the Indian ocean near Northwest coast of Australia

(2 marks)

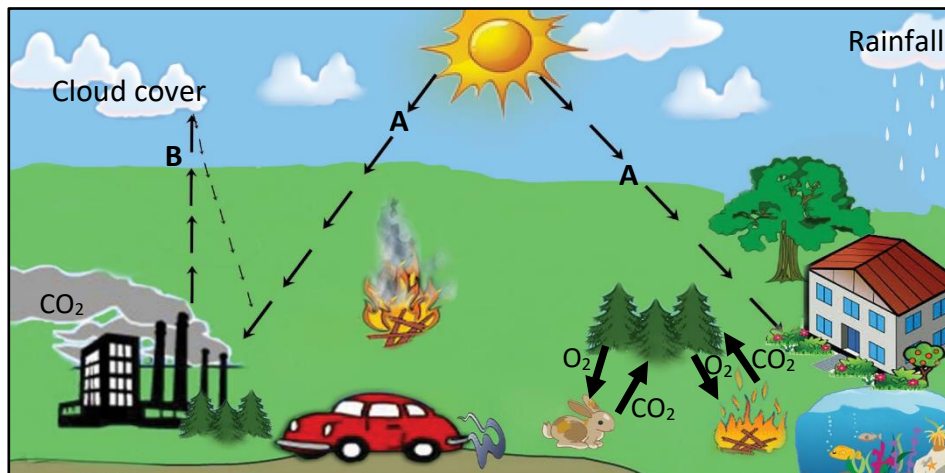
(ii) Mention **three** impacts of cyclones to physical and human environment.

(3 marks)

(iii) Write **three** actions taken to respond disasters and explain **one** of them.

(5 marks)

8.



(i) Name the occasions A and B in the picture above.

(2 marks)

(ii) Name **three** greenhouse gases that increase global warming.

(3 marks)

(iii) a) State **two** impacts of global warming on human activities.

(2 marks)

b) Write **two** strategies taken by the government of Sri Lanka in reducing the impacts of climate change and explain **one** of them in brief.

(3 marks)

Geography II

1. (a)

i.-----

ii.-----

iii.-----

iv.-----

v.-----

vi.-----

vii.-----

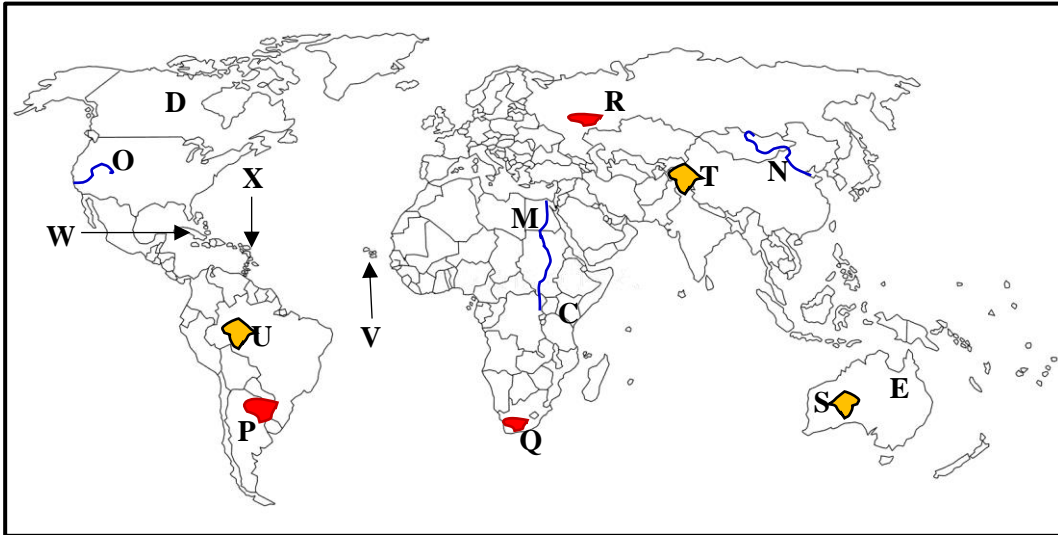
viii.-----

ix.-----

x.-----

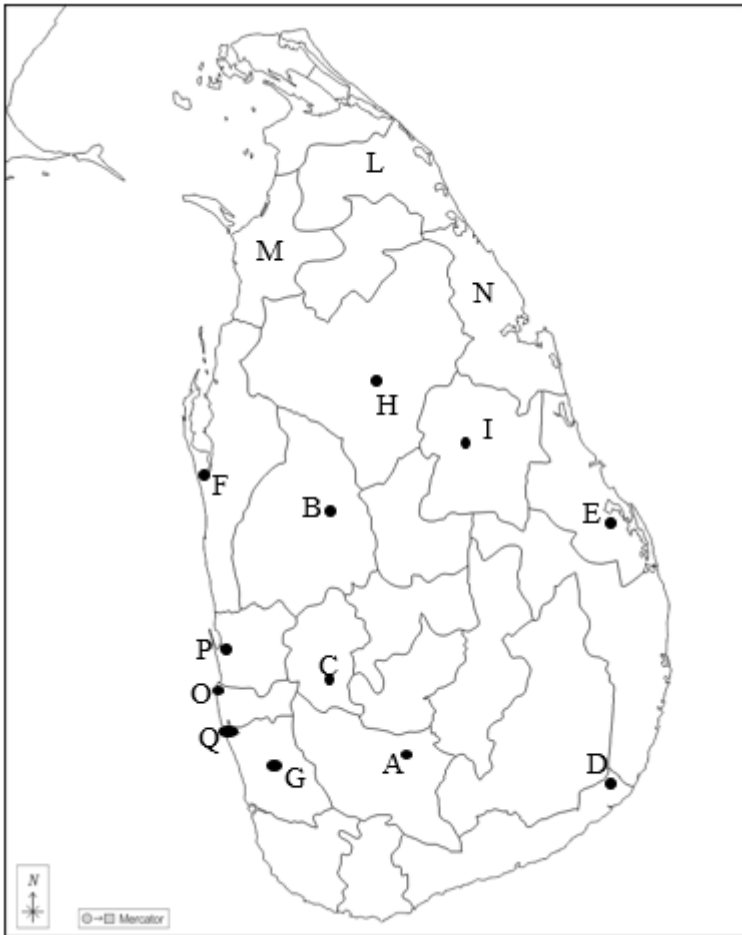
10

(b)



- (i)
- (ii)
- (iii)
- (iv)
- (v)

(c)

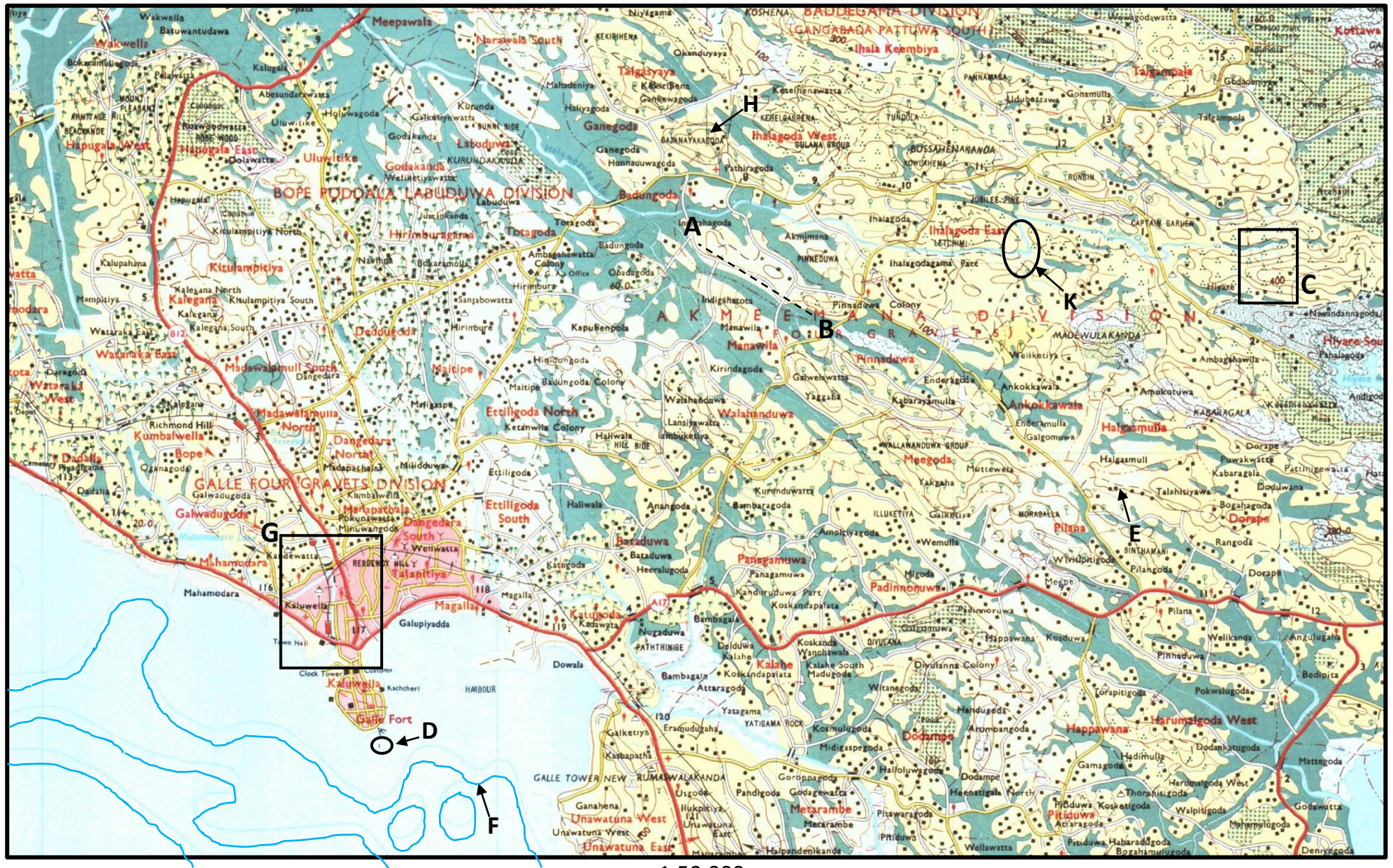


- (i)
- (ii)
- (iii)
- (iv)
- (v)

1. (a) $\frac{\quad}{10}$ + (b) $\frac{\quad}{5}$ + (c) $\frac{\quad}{5}$ = $\frac{\quad}{20}$

G.C.E. (Ordinary Level) Model Paper - 2023 (2024)

Geography



1:50,000

