

සියලු ම හිමිකම් ඇවිරිණි / முழுப் பதிப்புரிமையுடையது / All Rights Reserved]

ශ්‍රී ලංකා විභාග දෙපාර්තමේන්තුව ශ්‍රී ලංකා විභාග දෙපාර්තමේන්තුව ශ්‍රී ලංකා විභාග දෙපාර්තමේන්තුව ශ්‍රී ලංකා විභාග දෙපාර්තමේන්තුව ශ්‍රී ලංකා විභාග දෙපාර්තමේන්තුව  
 இலங்கைப் பரீட்சைத் திணைக்களம் இலங்கைப் பரීட்சைத் திணைக்களம் இலங்கைப் பரීட்சைத் திணைக்களம் இலங்கைப் பரීட்சைத் திணைக்களம் இலங்கைப் பரීட்சைத் திணைக்களம்  
 Department of Examinations, Sri Lanka Department of Examinations, Sri Lanka Department of Examinations, Sri Lanka Department of Examinations, Sri Lanka Department of Examinations, Sri Lanka  
 இலங்கைப் பரීட்சைத் திணைக்களம் இலங்கைப் பரීட்சைத் திணைக்களம் இலங்கைப் பரීட்சைத் திணைக்களம் இலங்கைப் பரීட்சைத் திணைக்களம் இலங்கைப் பரīட்சைத் திணைக்களம்  
 Department of Examinations, Sri Lanka Department of Examinations, Sri Lanka Department of Examinations, Sri Lanka Department of Examinations, Sri Lanka Department of Examinations, Sri Lanka

**84 E I, II**

අධ්‍යයන පොදු සහතික පත්‍ර (සාමාන්‍ය පෙළ) විභාගය, 2022(2023)  
 கல்விப் பொதுத் தராதரப் பத்திர (சாதாரண தர)ப் பரீட்சை, 2022(2023)  
 General Certificate of Education (Ord. Level) Examination, 2022(2023)

ශ්‍රී ලංකා විභාග දෙපාර්තමේන්තුව ශ්‍රී ලංකා විභාග දෙපාර්තමේන්තුව ශ්‍රී ලංකා විභාග දෙපාර්තමේන්තුව ශ්‍රී ලංකා විභාග දෙපාර්තමේන්තුව ශ්‍රී ලංකා විභාග දෙපාර්තමේන්තුව  
 இலங்கைப் பரීட்சைத் திணைக்களம் இலங்கைப் பரīட்சைத் திணைக்களம் இலங்கைப் பரīட்சைத் திணைக்களம் இலங்கைப் பரīட்சைத் திணைக்களம் இலங்கைப் பரīட்சைத் திணைக்களம்  
 Department of Examinations, Sri Lanka Department of Examinations, Sri Lanka Department of Examinations, Sri Lanka Department of Examinations, Sri Lanka Department of Examinations, Sri Lanka  
 இலங்கைப் பரīட்சைத் திணைக்களம் இலங்கைப் பரīட்சைத் திணைக்களம் இலங்கைப் பரīட்சைத் திணைக்களம் இலங்கைப் பரīட்சைத் திணைக்களம் இலங்கைப் பரīட்சைத் திணைக்களம்  
 Department of Examinations, Sri Lanka Department of Examinations, Sri Lanka Department of Examinations, Sri Lanka Department of Examinations, Sri Lanka Department of Examinations, Sri Lanka

පැය තුනයි  
 மூன்று மணித்தியாலம்  
 Three hours

අමතර කියවීමේ කාලය - මිනිත්තු 10 යි  
 மேலதிக வாசிப்பு நேரம் - 10 நிமிடங்கள்  
 Additional Reading Time - 10 minutes

Use additional reading time to go through the question paper, select the questions you will answer and decide which of them you will prioritise.

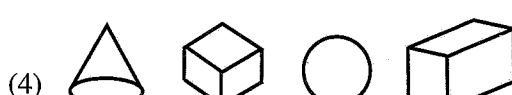
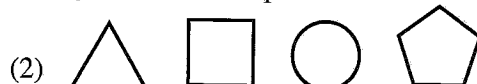
### Arts and Crafts I

#### Note :

- \* Answer all questions.
- \* In each of the questions from 1 to 40, pick one of the alternatives (1), (2), (3), (4), which is correct or most appropriate.
- \* Mark a cross (X) on the number corresponding to your choice in the answer sheet provided.
- \* Further instructions are given on the back of the answer sheet. Follow them carefully.

1. The folk art that is used to express all emotions including prosperity, happiness, entertainment, sadness, and comfort is,
- (1) wood carving. (2) bobbin lace art.  
 (3) mask art. (4) jewellery art.

2. What is the option which contains only the plane geometrical shapes?



3. What is the option which contains only the values of angles included in the pair of set squares?
- (1) 30°, 45°, 60°, 90° (2) 45°, 60°, 75°, 90°  
 (3) 45°, 60°, 75°, 80° (4) 30°, 60°, 90°, 120°

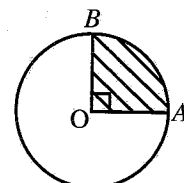
4. \_\_\_\_\_

The image given above depicts a type of a standard line used in mechanical drawing. These lines are used to

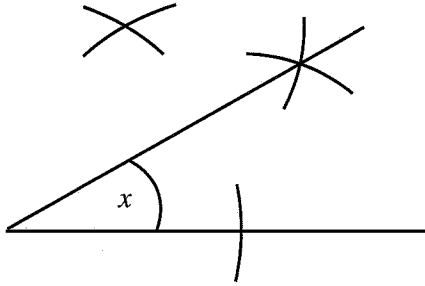
- (1) indicate the invisible edges of a creation.  
 (2) indicate the visible edges of a creation.  
 (3) to indicate the locations of intersect.  
 (4) to indicate the central axis of the symmetrical nature.

5. The shaded part of the circle in the given figure is called,

- (1) quadrant of a circle.  
 (2) chord.  
 (3) sector of circle.  
 (4) segment of a circle.



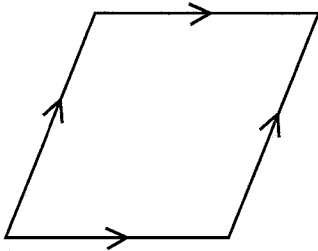
6.



The value of the angle X in the image given above is

- (1) 15°.                      (2) 30°.                      (3) 40°.                      (4) 60°.

7.



In the creation shown in the above picture,

- length of all sides are equal and opposite angles are equal.
- although the diagonals are unequal in length, they intersect rectangularly.
- opposite sides are of equal length and they are parallel.

This geometrical shape is known as,

- (1) square.                      (2) rhombus.                      (3) rhomboid.                      (4) rectangle.

8. The evolution of the curved surface of a solid object takes the shape of a rectangle in a

- (1) cube.                      (2) cylinder.                      (3) globe.                      (4) pyramid.

9. The data that should be fed when creating an ellipse according to arc method are

- (1) the length of the major and minor axis.  
 (2) distance between two foci.  
 (3) the distance from the directrix to minor axis.  
 (4) the distance from the intersected point to directrix.

10. Consider the following statements.

A - ability to minimize the wastage of resources.

B - increase the strength of the output.

C - ability to create a number of creations correctly and methodically

From the above, what are the statements that indicate the advantages of designing evolutionary drawings in the creation process.

- (1) only A and C.                      (2) only A and B.                      (3) only B and C.                      (4) All A, B and C.

11. Several steps followed in heat'n bond method are given below.

A - Cut the design or shapes from a plain coloured or printed clothing material.

B - Pre treatment of the piece of cloth.

C - Place the cut shapes on the rough surface of the heat'n bond paper and iron only the design with a well heated iron.

D - Cut the pasted design part from the paper.

E - Place the design on the location marked and fix it with a heated iron.

Select the answer that includes the correct order of the steps.

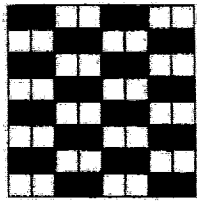
- (1) A, B, C, D, E                      (2) B, A, C, D, E                      (3) C, D, E, A, B                      (4) D, A, B, C, E

12. Design patterns are created by applying varnish and lacker layers on the rest of the parts except the part that should be printed in,  
 (1) printing by hand. (2) screen printing.  
 (3) stencil method. (4) mould printing method.
13. The most suitable brush type to colour a wider area at once in painting is,  
 (1) fine finishing brushes. (2) round brushes.  
 (3) flat brushes. (4) wash brushes.
14. Among the natural fibre used in the production of cloths, which fibre is used after carbonization?  
 (1) cotton fibre (2) wool fibre (3) flax fibre (4) silk fibre
15. Which durable environmental friendly materials can be used in creating artificial jewellery?  
 (1) paper (2) plastic (3) wire (4) glass
16. Several steps followed in the decorative item production process using pieces of cloths are given below.  
 A - cut the pieces of cloth using a pattern  
 B - preparing the pattern  
 C - select colourful clothing materials in which colours do not change with washing  
 D - making a creation with a fine finish  
 E - assemble the pieces of cloth using correct stitching methods  
 Select the answer that includes the correct order of steps.  
 (1) A, B, C, D, E (2) B, A, C, D, E (3) C, B, A, E, D (4) E, A, C, D, B
17. In batik creating process, double boiling method is used to prepare the wax mixture,  
 (1) as it is easy to melt wax.  
 (2) to maintain the temperature of the wax mixture at a constant level.  
 (3) to minimize the amount of wax that is used.  
 (4) as it is easy to remove the wax.
18. The first step of making a creation of knitting is,  
 (1) single twist fill knitting. (2) twine fill knitting.  
 (3) chain knitting. (4) centipede knitting.
19. In screen printing, what is the chemical segment used to apply on the screen under light sensitive methods?  
 (1) sodium chloride, caustic soda, gelatin (2) caustic soda, clatec, sodium chloride  
 (3) clatec, gelatin, dichromate (4) gelatine, thinner, dichromate
20. In textile production, a special attention is paid on stabilizing the dye and durability. The process that is followed in this regard is,  
 (1) bleaching. (2) pre treatment.  
 (3) carbonization. (4) post treatment.
21. Cloth weaving is done by putting weft in to a loomed warp. What tool is used to put weft for weaving is,  
 (1) shuttle. (2) winding machine.  
 (3) warp roller. (4) swift.
22. The weight of a single thread metric number 12 of a bale of yarn is 5 kg. What is the number of skeins in that bale?  
 (1) 05 (2) 12 (3) 50 (4) 60
23. For weaving a serviette warp, 10 two-ply skeins of thread have been used. If one kilogram contains 20 of those skeins of thread, the number of the yarn would be,  
 (1)  $2/20^S$ . (2)  $2/30^S$ . (3)  $2/40^S$ . (4)  $2/50^S$ .

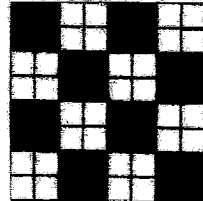
24. 30 threads have been used for one centimetre to weave table mats of 50 metre in length and 20 centimetres in width. What is the number of long threads that are there on this warp?  
 (1)  $50 \times 20 = 1000$  (2)  $20 \times 30 = 600$   
 (3)  $50 \times 30 = 1500$  (4)  $50 \times 20 \times 30 = 30000$

25. A number is assigned to threads to identify them easily. The number of a thread used to weave a curtain cloth is  $2/20^S$ . That type of thread is known as,  
 (1) single twist thread. (2) twined thread.  
 (3) three core thread. (4) multiple core thread.

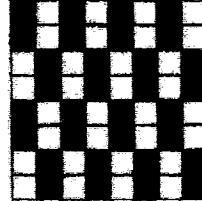
26. Frock, saree, fabric cloths are weaved by using plain weave. Select the plain weave among the patterns given below.



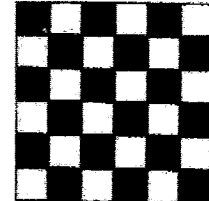
(1)



(2)

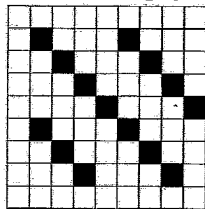


(3)

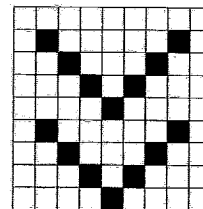


(4)

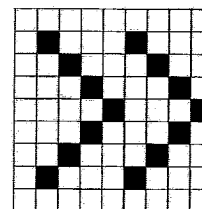
27. Select the weaving pattern used to weave denim cloths.



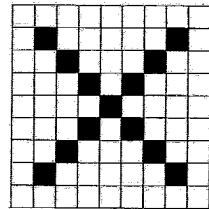
(1)



(2)



(3)

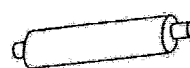


(4)

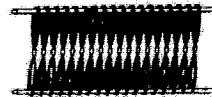
28. Heels are used to draw threads according to the pattern in weaving machines. Select the heels from the images given below.



(1)



(2)



(3)



(4)

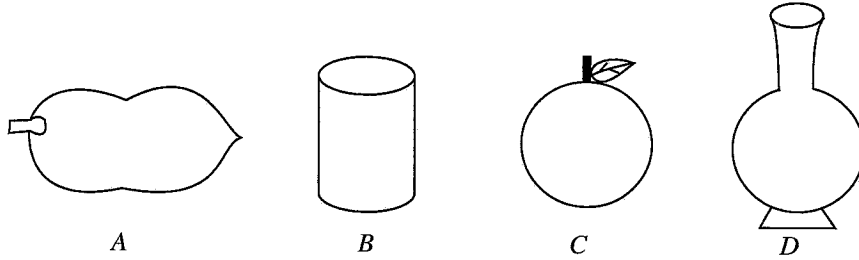
29. A tool set is used to elongate thread for the warp. The tool used to lease the warp is,  
 (1) neck. (2) bobbin creed. (3) warp roller. (4) lever frame.

30. In handloom production, different tools are connected in relation to different tasks. The task done by the tool 'batten' fixed to the handloom machine is,  
 (1) help to get shed. (2) help to press the weft in weaving.  
 (3) to weave rows of head. (4) connect treadles.

31. Clay used to produce goods is categorized for identification ease as,  
 (1) primary clay and residual clay. (2) secondary clay and 'diyalu' clay.  
 (3) primary clay and secondary clay. (4) secondary clay and 'agam' clay

32. The material with plasticity with two chemical water particles and a minimum amount of iron percentage used in porcelain goods production is,  
 (1) Kaolaniet (2) Bentoniet (3) Feldspar (4) Kaolin

33. In the production of ceramic items the glaze mixture is added with different types of minerals to obtain an appearance like glass with transparent nature and to obtain the colour
- (1) different oxides are used. (2) different acids are used.  
 (3) different stones are used. (4) different types of clay are used.
34. In the production of higher standardized items, non-sticky materials are turned into powder using machines. The machine used in this process is,
- (1) Boll mill. (2) Pug mill. (3) Joy crusher. (4) Filter Press.
35. Out of the products shown by following figures, what are the products that can be moulded by free hand?



- (1) A and B (2) A and C (3) A and D (4) B and D

36. The prepared clay items are fired in a klin. Select the answer which contains the change that **does not** take place when burning clay products.

- (1) becomes light (2) turns into a state that can hold water  
 (3) obtains a soft surface (4) does not change colour

37. The following methods are used to decorate clayware.

- A - carving  
 B - use marble pattern  
 C - glazing  
 D - decoupage pattern

The decorative methods that can be used from the above to decorate a clay pot which is fired to bisquit level is,

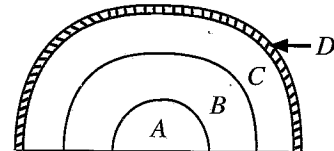
- (1) B and D only. (2) A, B and C only.  
 (3) A, C and D only. (4) B, C and D only.

38. By centring the lump of clay in the potter's wheel when producing clay pots, it is expected to,

- (1) maintain the balance of the produced clay pot.  
 (2) maintain the height of the produced clay pot.  
 (3) mould the bottom of the produced clay pot.  
 (4) remove the produced clay pot from the potter's wheel easily.

39. A model of a local klin is given in the picture. What is denoted by letters A, B, C, D respectively?

- (1) goods storing place, klin, hay layer, clay layer  
 (2) hay layer, klin, goods storing place, clay layer  
 (3) klin, goods storing place, hay layer, clay layer  
 (4) klin, goods storing place, clay layer, hay layer



40. You are given the task of creating a suitable sculpture to be placed outside in front of the principal's office in the school. The most suitable medium and method used for that creation is,

- (1) pulp medium and semi-elevated method.  
 (2) clay medium and fully elevated method.  
 (3) cement medium and little elevated method.  
 (4) steel medium and semi-elevated method.

සියලු ම හිමිකම් ඇවිරිණි / முழுப் பதிப்புரிமையுடையது / All Rights Reserved

ශ්‍රී ලංකා විභාග දෙපාර්තමේන්තුව ශ්‍රී ලංකා විභාග දෙපාර්තමේන්තුව ශ්‍රී ලංකා විභාග දෙපාර්තමේන්තුව ශ්‍රී ලංකා විභාග දෙපාර්තමේන්තුව ශ්‍රී ලංකා විභාග දෙපාර්තමේන්තුව  
 இலங்கைப் பரீட்சைத் திணைக்களம் இலங்கைப் பரීட்சைத் திணைக்களம் இலங்கைப் பரීட்சைத் திணைக்களம் இலங்கைப் பரීட்சைத் திணைக்களம் இலங்கைப் பரීட்சைத் திணைக்களம்  
 Department of Examinations, Sri Lanka Department of Examinations, Sri Lanka Department of Examinations, Sri Lanka Department of Examinations, Sri Lanka Department of Examinations, Sri Lanka  
 ශ්‍රී ලංකා විභාග දෙපාර්තමේන්තුව ශ්‍රී ලංකා විභාග දෙපාර්තමේන්තුව ශ්‍රී ලංකා විභාග දෙපාර්තමේන්තුව ශ්‍රී ලංකා විභාග දෙපාර්තමේන්තුව ශ්‍රී ලංකා විභාග දෙපාර්තමේන්තුව  
 இலங்கைப் பரීட்சைத் திணைக்களம் இலங்கைப் பரීட்சைத் திணைக்களம் இலங்கைப் பரීட்சைத் திணைக்களம் இலங்கைப் பரීட்சைத் திணைக்களம் இலங்கைப் பரීட்சைத் திணைக்களம்  
 Department of Examinations, Sri Lanka Department of Examinations, Sri Lanka Department of Examinations, Sri Lanka Department of Examinations, Sri Lanka Department of Examinations, Sri Lanka

84 E I, II

අධ්‍යයන පොදු සහතික පත්‍ර (සාමාන්‍ය පෙළ) විභාගය, 2022(2023)  
 கல்விப் பொதுத் தராதரப் பத்திர (சாதாரண தர)ப் பரீட்சை, 2022 (2023)  
 General Certificate of Education (Ord. Level) Examination, 2022 (2023)

ශිල්ප කලා I, II  
 நுண்கலை I, II  
 Arts and Crafts I, II

Arts and Crafts II

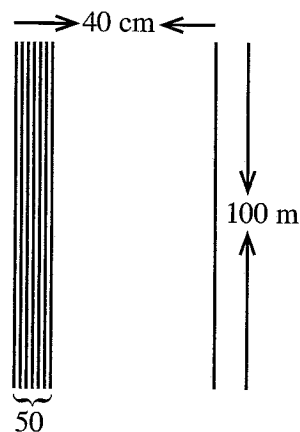
\* Answer five questions, including question one and four other questions.

1. It is proposed to conduct a leadership training camp for students in several schools in the area with the patronage of your school. Most of the tasks of that programme are to be entrusted to students studying Art and Craft subject.
  - (i) Draw a poster suitable to inform the schools of the area about the leadership training.
  - (ii) Draw the front side of an invitation made with paper quelling to be sent to the resource persons and the guests attending the leadership training programme.
  - (iii) Draw a creative badge to be worn on the uniform of the external students attending the training camp.
  - (iv) Name **two** environmental resources that can be used to create a same patterned necklace for all the students of school dancing group to welcome the students of other schools and guests.
  - (v) A bag should be used to keep the tools used inside the camp and it should be created using an environmental friendly medium. Name **two** materials that can be used for that.
  - (vi) Draw a flower arrangement that can be used to decorate the place where lunch is served in the camp site.
  - (vii) The production cost of a cushion cover produced during a group activity which are decorated with different attractive stitching methods is Rs. 600/= . It is expected to be sold for 20% profit. Calculate its sale price.
  - (viii) The challenge given to one group participating in the training camp is to create a package to pack short eats offered to the guests. Draw a sketch of a creative package suitable for that.
  - (ix) It is expected to give instructions to use coloured flags to identify the locations of the groups. Draw a creative flag that can be used for that using weaving patterns.
  - (x) Draw a sketch of a creative product for a souvenir made with clay to give each participating student.
2. In creating physical resources, by designing diagrams, the production process can be carried out with correct shapes and measurements.
  - (i) Draw **two** geometrical shapes suitable for wallpaper holder to display in a classroom.
  - (ii) Draw a circle with a radius of 4 cm and mark the sector, chord and segment.
  - (iii) Draw the evolution of a tea package of a regular pentagon shape in which the length of side is 3 cm and height is 4 cm.

3. It is very common to decorate the environment with textile and home decorative items.
- Mention a method to give a brightness and durability to flower arrangements made of paper used as a home decoration.
  - Describe how to create a cushion cover using the method of ribbon work.
  - Draw a design suitable for screen printing to decorate the front of a sports wear and shade the areas that **should not** be printed.

4. Given below is a sketch and the description of a warp prepared to weave a serviette warp.

- \* The length of the warp is 100 m.
- \* The width of the warp is 40 cm.
- \* The number of warp threads used per centimetre is 50.
- \* The number of warp threads is  $2 / 20^S$ .



- Name a pattern used to weave a serviette.
  - Calculate the amount of warp threads needed to weave the serviette warp.
  - Draw in a graph two units of a 'regular twill' weave used to weave trouser cloths.
5. In textile production, the need as well as decoration has been paid attention to.
- Draw a creation with geometrical shapes for a wall decoration using 'patch work' method.
  - Explain with an illustration how a small block with an environmental friendly medium is made for cloth printing.
  - Draw the reed fixed to the weaving machine and write a brief description.
6. Different media are used for clay creations.
- Name **two** types of kiln in which electricity and gas are used to burn clay items.
  - Name **two** techniques of decorating a clay item during leather hard stage and write a short description.
  - Description with diagrams on how to produce a clay item using coiled pottery.
7. There is much evidence that there were decorative items to beautify gardens since pre 'stone age.
- Draw a wall carving that can be used to decorate the front of a house.
  - Explain what a fully elevated sculpture is and give **two** examples.
  - Describe with illustration how a sculpture is made of pulp medium.

\* \* \*