



අධ්‍යාපන අමාත්‍යාංශය
கல்வி அமைச்சு
Ministry of Education

G. C. E. Ordinary Level | අ. සො. ස. සාමාන්‍ය පෙළ | 2022 (2023)

Student Seminar Series

ශිෂ්‍ය සම්මන්ත්‍රණ මාලාව

Practice Paper | උපකාරක ප්‍රශ්න පත්‍ර

English Language

ඉංග්‍රීසි භාෂාව



Question Paper - I, II | ප්‍රශ්න පත්‍රය - I, II (English Medium)



ද්‍රව්‍යාපන අමාත්‍යාංශය

கல்வி அமைச்சு

Ministry of Education, Sri Lanka

31

E

I

අ. පො. ස. සාමාන්‍ය පෙළ විභාගය - උපකාරක සම්මන්ත්‍රණ මාලාව - 2022 (2023)
கல்விப் பொதுத் தராதரப் பத்திர சாதாரண தரப் பரீட்சை ஆதரவு கருத்தரங்கு தொடர் - 2022 (2023)
G. C. E. Ordinary Level Examination - Support Seminar Series - 2022 (2023)

ඉංග්‍රීසි භාෂාව I
ஆங்கில மொழி I
ENGLISH LAUGUAGE I

පැය එකයි
ஒரு மணித்தியாலம்
One Hour

ඉංග්‍රීසි භාෂාව I

ප්‍රශ්න සියල්ලට ම පිළිතුරු මෙම පත්‍රයේ ම ලියන්න .

எல்லா வினாக்களுக்காகும் இவ்வினாத்தாளிலேயே விடை எழுதுக.

ANSWER ALL QUESTIONS ON THIS PAPER ITSELF

Test 1

Match the following posters with the captions given below. Write the relevant number in front of the caption. *One has been done for you.*

a	b	c	d	e	f
Limited stocks Hurry!	Eat to stay healthy	To all members	Caution! Road under construction	To all book lovers	Keep right

- | | | | |
|----------------------------------|----------------------|--------------------------------|----------------------|
| 1. Exhibition extended till 30th | <input type="text"/> | 4. Prices slashed on all items | <input type="text"/> |
| 2. Use alternative routes | <input type="text"/> | 5. Safety on road | <input type="text"/> |
| 3. Nuts lower the risk of cancer | <input type="text"/> | 6. Annual General Meeting | <input type="text"/> |

(1×5=5)

Test 2

Fill in the blanks in the following notice using the words given in the box. Write the letter of correct word in the space given. *The first one is done for you.* (1×5=5)

NOTICE

Audition for the Singing Competition

An audition will be held for those who are (1) _____ b _____
in taking part in the (2) _____ Singing Competition on 30th December 2022 from 9am (3)
_____ in the school (4) _____. Those who would (5) _____ to
join this competition are (6) _____ to come for the audition with a handwritten application.
20-12-2022

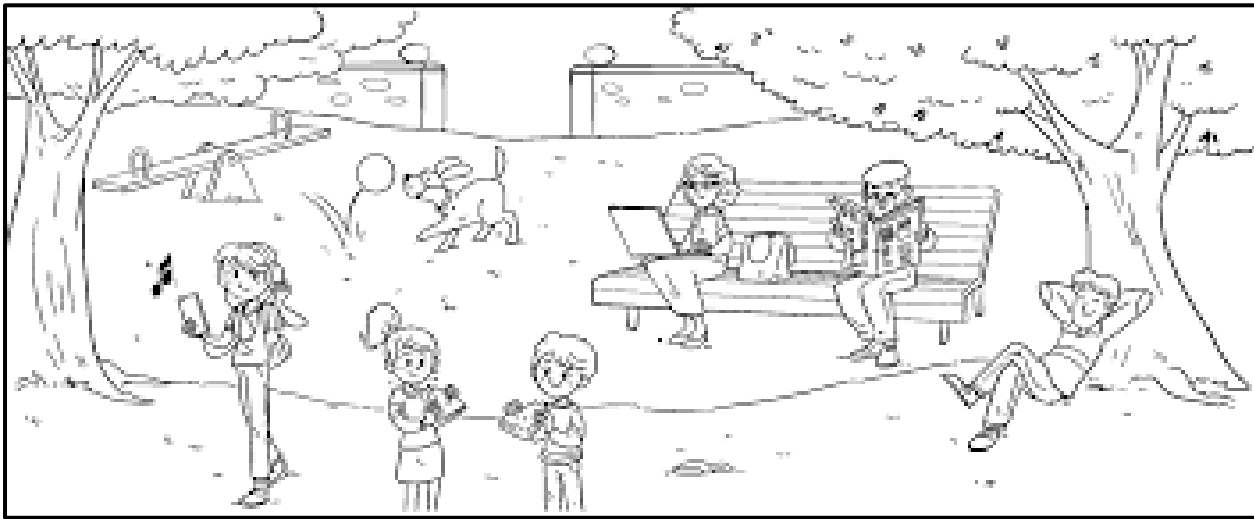
Secretary

Music Society

a) Auditorium	b) interested	c) annual	d) requested	e) like	f) onwards
---------------	--------------------------	-----------	--------------	---------	------------

Test 3

Study the picture and fill in the blanks using the words given in the box. Write the letter of the correct word in the blank. *The first one is done for you.*



a) relaxing	b) between	c) three	d) foreground	e) her
f) practising	g) children's	h) seesaw	i) the	j) bench
k) a				

This picture illustrates a (1) g park. There are three adults and (2) _____ children in the picture. Two of the people are on a (3) _____ and the other one is (4) _____ under a tree. The two on (5) _____ bench are busy. The lady on the left of the bench is working on (6) _____ computer while the man next to her is reading (7) _____ newspaper. In (8) _____ them, there is a handbag. There are two girls and a boy in the (9) _____ of the picture. They seem to be (10) _____ a drama. In the middle of the picture there is a dog. It is playing with a ball. In the top left hand corner, there is a (11) _____. This is a fine place for a family to relax in the evening.

(1/2×10=5)

Test 4

Underline the most suitable word to fill in each blank. *The first one is done for you.*

Six men have been trapped in a mine for seventeen hours. If (1) _____ (them/they/their) are not brought to the surface soon (2) _____ (they/them/it) may lose (3) _____ (your/their/them) lives. However, rescue operations are proving difficult. Meanwhile, to keep the men aware of the rescue process, a microphone has been lowered into the mine to keep (4) _____ (they/them/ their) in touch with (5) _____ (themselves/they/their) close relatives. The men seem to be cheerful among (6) _____ (they/themselves/their) since they are confident they will get out soon.

(1×5=5)

Test 11

Fill in the blanks with the words given in the box. There is one extra word. (1/2×14=7)

examinations, campus, reproduce, bewildered, notes, find, degree, library, devote, lectures, different, freedom, work, rarely, friends

When Raja entered the (1) _____ for the first time he was rather (2) _____, and it took him some time to (3) _____ out where to go for lectures and tutorials and how to use the (4) _____. To his surprise, he found that no one forced him to attend (5) _____ or tutorials, and at first, he misused his new-found (6) _____ and preferred to spend a lot of time enjoying himself with his (7) _____ in Kandy. Suddenly he found that he could not cope with the (8) _____ he had missed, and from then on he became a (9) _____ person and began to (10) _____ himself to his studies. Many of Raja's friends, including Gamini made the mistake of thinking that studying for a (11) _____ was the sole object of entering a university. They hoped to take down (12) _____ of the lectures they heard and (13) _____ them in their tutorials and (14) _____. But they soon found how impossible it was to write good tutorial assignments without doing intelligent reference work.

Test 12

Complete the following passage using the most appropriate form of the verb given within brackets (1×5=5)

Film making (1) was invented (invent) hundred years ago. The first real film (2) _____ (produce) by French brothers Luniers in 1895. In Sri Lanka it came slightly later. Cinemas in earlier days (3) _____ (be) black and white and silent. Then it (4) _____ (find) that series of signals (5) _____ (can apply) to one side of role of film. Special machines (6) _____ (turn) these signals into sound.

Test 13

Read the following paragraph taken from an encyclopedia. Select the most suitable caption for each paragraph and write the letter of the caption in the box given against paragraph. There is one extra caption.

Captions

- A -** A close bond **B -** Life away from Earth **C -** Healthy eating
D - A rare opportunity **E -** They started long ago **F -** The path ahead

(1)	A balanced diet is one that provides everything that our body needs for health and growth. Energy-giving foods contain carbohydrates and fats, which the body burns up slowly. Energy in food is measured in calories. A ten – year – old child, for example, needs about 2000 calories a day.	
(2)	People first marked out boards to play games four thousand years ago. Board games such as chess and draughts originally resembled a battle field in which players captured enemy soldiers. Many modern games, on the other hand, imitate peaceful aspects of life, such as buying and selling as in Monopoly.	
(3)	Space is a perilous place for human beings. There is no air to breathe, and without a spacesuit for protection an astronaut would explode. This is because the human body is built to function under the constant pressure of the Earth's atmosphere, which is not present in space.	

(4)	Bats find their way in the dark by making squeaks and clicks, which are so high-pitched that most humans cannot hear them. This is called echolocation. The sounds made by the bat bounce off a nearby object such as a tree or a moth. The bat can detect the returning echoes with its large, pointed ears.	
(5)	Dogs have lived in harmony with human beings for more than 10,000 years. It is quite possible that over thousands of years human beings have caught and tamed dogs, at first to help with hunting, herding and guarding, and, much later, to keep as pets.	

Test 14

- (a) The principal of your school asked you to organize a workshop for the members of the Drama Club before the students participate in the Zonal Drama Competition. As the Secretary of the Drama Club, write a letter to the Director of 'Rantaru Performing Arts Centre' requesting him to send a guest speaker for the event.

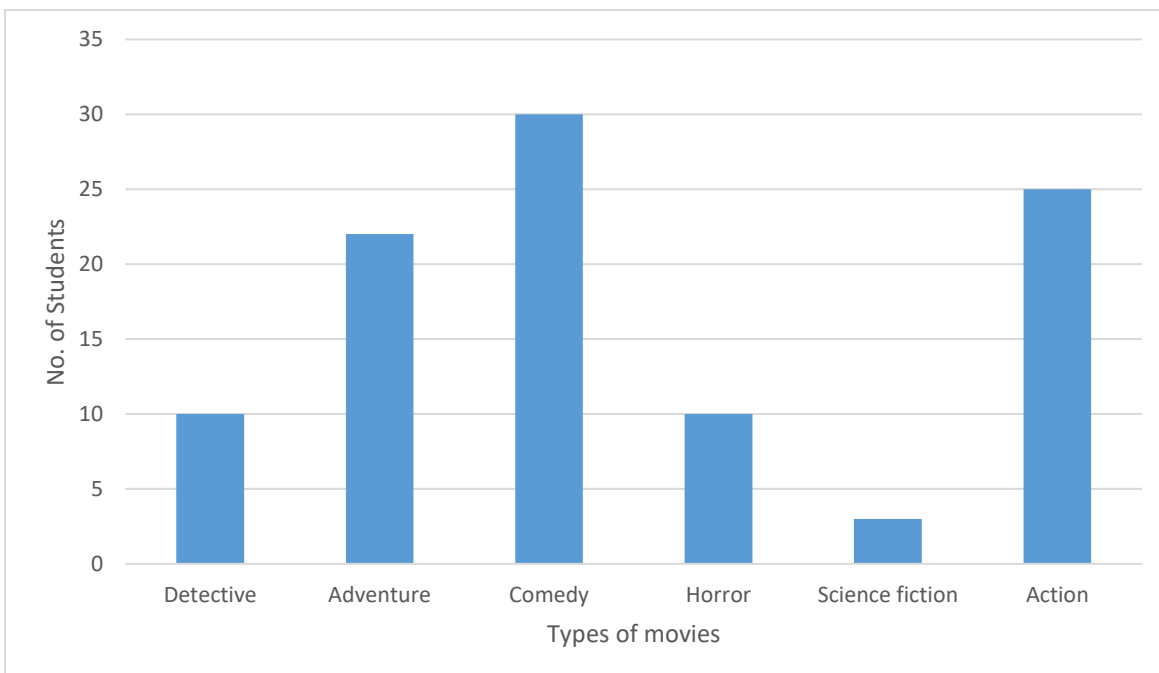
Include the following:

- The reason for writing
- Mention who the audience will be
- Ask for a convenient date and time
- Ask whether any special equipment is needed

OR

- (b) The following bar graph shows the results of a survey conducted among a hundred grade eleven students about what they like to watch during their free time. Study the chart and write a description about it. Use about 100 words. The following words will help you.

more than, less than, most, least, equal, more popular, highest, lowest



Test 15

Read the following text and answer the questions given below.

Rice is our staple food and paddy is cultivated in all parts of our country. A hot climate, fertile soil and plenty of water are needed for the successful cultivation of paddy.

Long ago, people lived chiefly in the dry zone. There was not enough water in these areas and tanks were constructed to irrigate fields. An earthen dam was built across a stream and the water was held up to form a reservoir. The early reservoirs were built, maintained and repaired by the people of each village, who were good engineers. These small lakes were known as village tanks.

Later, large reservoirs were constructed by kings like Vasabha, Mahasen, Datusena and Parakramabahu. These giant tanks were used to irrigate large districts, and canals were cut to bring water to these tanks and to connect one tank with another. The Kala wewa was connected to the tanks near Anuradhapura by means of Jaya Ganga, a canal fifty-four miles long. The Minneri, Kavdulu, Giritale and Kantalai reservoirs near Polonnaruwa were combined into a vast irrigation scheme by means of the Alahera canal. The waters of Kala Oya, the Malwathu Oya, the Amban Ganga and the Mahaweli Ganga were utilized to form these early irrigation works which reveal the engineering skills of our ancestors.

In ancient times, water rates were charged by owners of tanks, and a grain tax was collected by royal officials. Since the grain tax was the chief source of revenue, large tanks and canals were constructed and maintained under royal supervision, and the construction of the irrigation works was considered one of the chief duties of a good king.

In times of war or rebellion, however, bunds and canals were damaged and crops were destroyed. Feeder canals were breached and water supplies were cut off whenever rebellions organized by discontented princes or when the country was invaded by foreign armies. During such times central administration of the country was disorganized. Consequently, large reservoirs and canals were not repaired and fields were not cultivated.

In the thirteenth century, when the northern part of the island was conquered by foreign invaders, the ancient cities of Anuradhapura and Polonnaruwa were deserted. The irrigation works in these areas were neglected, human habitation was abandoned and Dry Zone reverted to jungle. It remained in this condition for centuries.

(1) Say whether the following statements are **True** or **False**. Put a tick (✓) in the relevant column.

	True	False
(1) Paddy is cultivated in some parts of our country.		
(2) Long ago people chiefly lived in the Wet Zone.		
(3) Jaya Ganga is fifteen miles long.		
(4) The Grain tax was the chief source of revenue.		

(1/2 X4 = 02 marks)

(2) Complete the following statements.

(a) The small lakes were known as _____.

(b) Large tanks and canals were constructed and maintained under royal _____.

(2 marks)

(3) Read paragraphs 2 and 3 and find a word which has the same meaning as the following.

(a) Made of earth : _____

(b) A place where water is stored : _____

(2 marks)

(4) Underline the best title for the passage.

(a) Great Kings of Sri Lanka

(b) Our Staple Food

(c) Engineering is not new

(1 mark)

