



Jaffna Hindu College

1st Term Evaluation Exam - 2022

Grade - 06

Information & Communication Technology

Time : 2 Hours

Name / Index No.

Part i

01) Select the correct answer.

- 1) Which one is producing after the process in the computer?
 - 1. Instructions
 - 2. Data
 - 3. Information
 - 4. Facts
- 2) Which one is not a significant features of computer
 - 1. Reliability
 - 3. Consistency
 - 2. Accuracy
 - 4. Natural Intelligence
- 3) Select the input device from the following
 - 1. Speaker
 - 2. Router
 - 3. System Unit
 - 4. Microphone
- 4) Which one is not an embedded computer system
 - 1) Smart T.V
 - 2. Smart watch
 - 3. Smart board
 - 4. Smart phone
- 5) Primary storage is
 - 1) DVD
 - 2. CD
 - 3. CPU
 - 4. RAM



- 6) Select the name of the device
 - 1. Webcam
 - 2. Scanner
 - 3. MODEM
 - 4. Router
- 7) Which one is not a computer software
 - 1. MS DOS
 - 2. MS Word
 - 3. MS Paint
 - 4. MS Excel
- 8) Which one is not a ICT application in banking.
 - 1. Electronic Card
 - 2. Robot
 - 3. ATM
 - 4. Internet Banking
- 9) Which one is giving uninterrupted power to the computer
 - 1. CPU
 - 2. RAM
 - 3. ROM
 - 4. UPS
- 10) Pen drive is a device.
 - 1. Input
 - 2. Output
 - 3. Storage
 - 4. Communication

02) Fill in the blanks.

- 11) The Central Processing Unit is located inside the
- 12) Network Interface Card is device.
- 13) All the things that you can touch in the computer are called
- 14) is using to read the price of the things in trading centers.
- 15) The person who operates the computer is called
(user, motherboard, hardware, Barcode reader, communication)

03) Put the mark for the following are right or wrong.

- 16) System Unit is an essential component in the computer. ()
- 17) RAM is a primary storage. ()
- 18) Web camera is a output device. ()

- 19) Digital thermometer is an embedded computer system. ()
 20) Robot technology is using in factories. ()

Part ii

01) Answer the following questions.

- 1) What are the basic functions of the computer?

- 2) Write two examples for the output devices.

- 3) What are the two types of storage devices?

- 4) Mention two places where computer is using?

- 5) Mention two situations you are using computer.

- 6) What is the meaning of embedded computer system?

- 7) What is computer hardware?

- 8) Mention the two situations you use computers in schools.

- 9) Write two examples for using computer system in hospitals.

- 10) Give two examples for using computer system in agriculture sector.

(10 2 = 20 Marks)

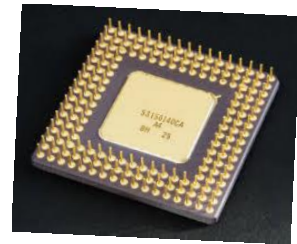
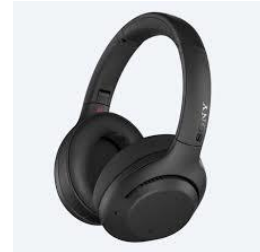
02) Write the name of the following devices.



.....



.....



(10 3 = 30 Marks)

03) Describe the following heading briefly.

- 1) Computer
- 2) Central Processing Unit
- 3) Computer software
- 4) Communication devices
- 5) Main memory

(5 X 2 = 10 Marks)