

**Mid Year Examination 2015**  
**Information & Communication Technology I**  
**තොරතුරු හා සන්නිවේදන තාක්ෂණය I**

Grade 11

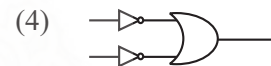
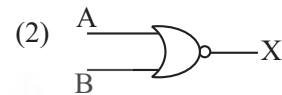
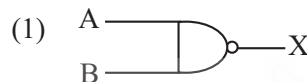
Time: 1 hour

Name/ Index No.

- Answer all questions.
  - In each of the question 1 to 40, pick one of the alternative (1), (2), (3), (4) which you consider as correct or most appropriate.
01. What is the most accurate statement about the computer.
- (1) A computer is an electric equipment which fulfill all needs.
  - (2) It is an equipment which turns data in to information.
  - (3) It is an electronic equipment which takes data and provide information after processing and can store many data and information.
  - (4) Not any of the above answers.
02. What is the correct order of processing technology which used in the classification of computer generation.
- (1) Vacuum Tubs, IC, Transistors
  - (2) Transistors, Vacuum Tubs, IC
  - (3) Transistors, IC, Vacuum Tubs
  - (4) Vacuum Tubs, Transistors, IC
03. What can be considered as an information.
- (1) Names of the students in a class.
  - (2) The last four digits of a telephone number
  - (3) The graph which shows the number of students who has passed ICT in GCE OL
  - (4) The admission numbers of students.
04. ALT, CTRL, DEL are some of the keys in the computer key board. They are known as,
- (1) Control Keys
  - (2) Typing keys
  - (3) Numeric keys
  - (4) Special keys
05. The answer which includes only Pointing Devices
- (1) mouse, light pen, touch pad, web camera
  - (2) light pen, scanner, mouse, Joystick
  - (3) Digital camera, mouse, light pen, web camera
  - (4) Touch pad, mouse, light pen, joystick
06. Consider the following statements.
- A - RAM is a volatile memory
- B - Register memory has the high data transmission Speed
- C - Floppy Disk has large memory capacity more than compact disk.
- According to the above statements.
- (1) Only A is true
  - (2) Only A and B are true
  - (3) Only C is true
  - (4) All are true

07. If base = n (is a number system) the largest digit in that number system equal to,  
 (1)  $2 * n$  (2)  $16 * n$  (3)  $n + 1$  (4)  $n - 1$
08. What is the minimum value (The smallest) of these numbers  $A = 45_{10}$   $B = 111000_2$   $C = 37_8$   
 $D = 1A_{16}$   
 (1) A (2) B (3) C (4) D
09. If  $P = 1110_2$   $Q = 1111_2$  then  $P + Q$  is,  
 (1)  $10010_2$  (2)  $11001_2$  (3)  $11101_2$  (4)  $11100_2$
10. The ICT teacher input the ICT subject number as 80, using computer keyboard. It store as binary code in the RAM. What is the binary number relevant this subject number.  
 (1)  $101000_2$  (2)  $1010000_2$  (3)  $1010100_2$  (4)  $100001_2$
11. Ravindu has a collection of photos. It's capacity about 2850 KB. What is the minimum capacity should have to save this photos in a flash Drive  
 (1) 1 MB (2) 1 GB (3) 3 MB (4) 2 GB
12. According to the ASCII code,  $G = 1000111_2$  what is the character of  $1000100_2$  in ASCII.  
 (1) H (2) D (3) F (4) E
13. What is the suitable logic gate to related to following truth table.

A	B	X
0	0	1
0	1	1
1	0	1
1	1	0



14. A merchant sells a pack of three items for 500/-. The pack contains 1 kg of rice (A) 1 kg of Sugar (B) The customer can select either a 400 g of milk powder (C) or 1 kg of dhal (D) as the third Item. Which of the following Boolean expression represent above scenario?  
 (1)  $(A \text{ AND } B) \text{ AND } C \text{ AND } D$  (2)  $A \text{ AND } B \text{ AND } (C \text{ OR } D)$   
 (3)  $A \text{ AND } B \text{ OR } (C \text{ OR } D)$  (4)  $A \text{ OR } B \text{ OR } (C \text{ AND } D)$
15. Thought an operating System.  
 A - manage the computer memory related to stored file, folders  
 B - guide to user for use computer giving instruction and give the help to command.  
 C - build the inter relationship between computer user and computer hardware with giving interface.

What is the correct statement among above statements?

- (1) Only A and B (2) Only A and C (3) Only B and C (4) Only A, B and C

- Consider the given spread sheet to answer question No. 16 and 17.


	A	B	C
1	Name	IT	MATHS
2	Kamal	80	75
3	Nimal	50	80
4	Pamal	60	80
5	Ruwan	75	70
6	Nuwan	90	93
7	No. of Students		

16. If formula = COUNT (B2 : B6) is written in cell B7. What is the value would be display in cell B7?

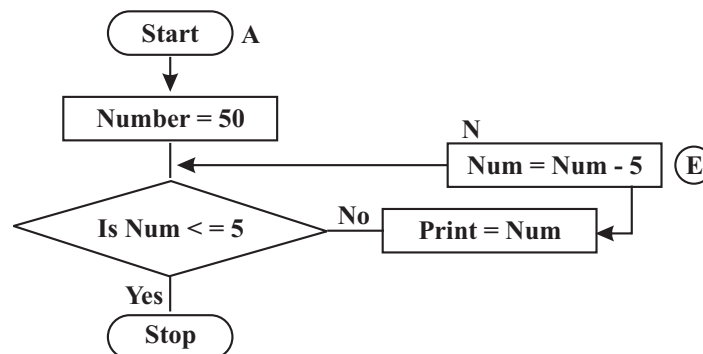
- (1) 315 (2) 05  
 (3) 90 (4) 04

17. What is the formula should write in C8 cell to find the highest maths marks in the marks range.

- (1) = Total (C2 : C6) (2) = Average (C2 : C6)  
 (3) = Max (C2 : C6) (4) = Mini (C2 : C6)

18. One of the computer user tries to make a budget report using the Microsoft word 2007 software. What is the easiest method to do the mathematical calculation tasks for that?
- (1) Open Ms excel and create a table → Copy and paste to word page
  - (2) Microsoft Word → insert → Object → object → (select the suitable software excel)
  - (3) Create in the Excel and make as a PDF file
  - (4) Open calculator on the computer screen
19. What is the Provide in a presentation software to move some image from left side to right side in a slide.
- (1) Slide layout
  - (2) Slide transition
  - (3) Animation
  - (4) Slide Design
20. What is the file extention use to save a electronic spread sheet.
- (1) .Text
  - (2) .xlsx
  - (3) .ppt
  - (4) .Doc
21.  What is the main word formation can we see in this part.
- (1) Bolt and Alignment
  - (2) Drop Cap
  - (3) Insert word Art
  - (4) Grow font
22. What is the suitable field to put the primary key in a data base?
- (1) Birthday
  - (2) Address
  - (3) Name
  - (4) National Identity card number
23. What is the most suitable data type to select to identity card number data field,
- (1) Number
  - (2) Text
  - (3) Date and Time
  - (4) Currency
24. Collection of main fields know as,
- (1) Record
  - (2) Layout
  - (3) File
  - (4) clipboard
25. What is the relevant computer generation use in Assembly language?
- (1) 1st Computer generation
  - (2) 2nd Computer generation
  - (3) 3rd Computer generation
  - (4) 4th Computer generation
26. .... is interprets a line by line in a computer programe.
- (1) Translator
  - (2) Interpreter
  - (3) compiler
  - (4) Assembler

● Considering the given flow chart to anser question number 27 and 28.



27. What is the output of above flow chart?
- (1) 50, 45, 40, 35, 30, 25, 20, 15, 10
  - (2) 50, 55, 60, 65, 70, 75, 80, 85, 90
  - (3) 05, 10, 15, 20, 25, 30, 35, 40, 45
  - (4) 55, 45, 35, 25, 15, 05

28. If num  $\oplus$  Change as Num = Num - 10 then out put may be,  
 (1) 50, 40, 30, 20, 10 (2) 40, 30, 20, 10, 0  
 (3) 10, 20, 30, 40, 50 (4) -10, -20, -30, -40, -50
29. Not a high level computer language,  
 (1) VB (2) JAVA  
 (3) Machine language (4) C++
30. What is the control structure of IF....., Else sentence in a computer programe,  
 (1) loop (2) Repetition  
 (3) Selection (4) Sequence
31. Today large number of languages can be used in computer task. What is the reason for that,  
 (1) using internet (2) use the unicode  
 (3) introduce new computers (4) use modern devices to computer
32. There is a small network which is spread in a limited geographical area. It is known as,  
 (1) LAN (2) MAN (3) WAN (4) House Network
33. Which an example for online real time processing,  
 (1) ATM (2) make telephone bill  
 (3) make paysheet (4) make result sheet
34. .... is sport to make decision for high level management.  
 (1) Executive information system  
 (2) Decision making information system  
 (3) management information system  
 (4) transaction information system
35. Which printers have heads and pins?  
 (1) Dot printers (2) Inkjet printers  
 (3) Laser printers (4) Thermal printers
36. Which is not a system development life cycle step.  
 (1) System Design (2) System Analysis  
 (3) System Classification (4) System Maintenance
37. "School is a system. In which ..... is not a sub system in it.  
 (1) Teachers (2) Mathematical unit  
 (3) Vehicle park (4) library
38. A = # B = @ C = &  
 What is or what are the symbols can we seen in e-mail address.  
 (1) Only A (2) Only B (3) Only C (4) Only A and B
39.  $10 \text{ mod } 3 = ?$  What is the value ?  
 (1) 02 (2) 3.3 (3) 1 (4) 13
40. Central processing unit is contained with,  
 (1) Alu, Cu, Input Devices (2) Output, Input, process  
 (3) Menory, Display, Input (4) Alu, Cu, Memory

# Mid Year Examination 2015

## Information & Communication Technology II

Grade 11

තොරතුරු හා සන්නිවේදන තාක්ෂණය II

Time: 2 hours

Name/ Index No.

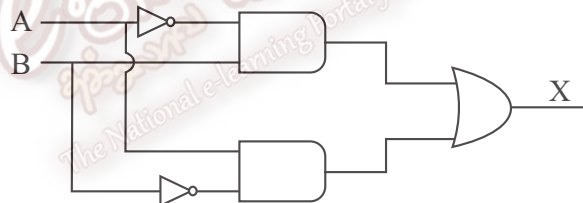
- Answer five questions only including first question and four other questions.
- The first question carries 20 marks and each of other questions carries 10 marks.

01. Write the short answers.

- (1) Classify the computers according to technology.
- (2) We can use many objects in data base management process. Write 02 objects we can use as to database.
- (3) Match A and B columns.

A	B
A type of computer network	BCD
Guided media	PS2
Half Duplex Data Transmission	WAN
Computer cording system	UTP
Connect the mouse and Key Board	Walkie-talkie

- (4) Write the boolean expression of following logic circuit and names the logic gates which use to create it.



- (5) Convert the Hexa Decimal number  $7F_{16}$  into octal number'
- (6) Fill in the A and B blanks using correct answers in the brackets.  
(Windows, Joseph Jacquard, DOS, Charles Babbage, Ada Augusta)
  - ★ Punch Card system was introduced by ..... (A) .....
  - ★ Command Line interface (CLI) has ..... (B) .....

(7) What is meant by Algorithm?

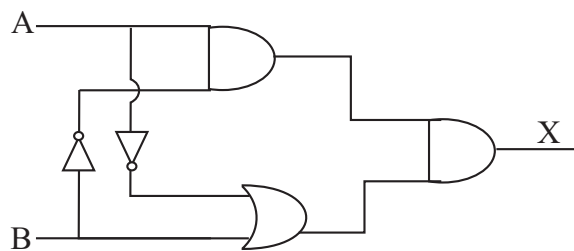
Write two types of represent the Algorithm.

- (8) Write the parts of a system (sub system and components) which are in the bank.
- (9) Write two special features of USB port.
- (10) What is meant by Intranet? (2 x 10 = 20 marks)

02. Ranil has a PC computer in his home. He tries to success his education using that and it helps him to communicate with a friend in abroad.

- (1) Write two ways of using computer for education purposes. (02 marks)
- (2) What are the main thing should have get internet facilities to computer.(02 marks)
- (3) Write three ways Ranil communicates with his friend in abroad. (03 marks)
- (4) Write three computer or ICT applications in Business and financial field. (03 m.)

03. A and B are the inputs of the logic gate circuit and X is the output.



- (1) Write the Boolean expression to represent the above logic circuit. (02 marks)
- (2) Draw the truth table for that expression. (02 marks)
- (3) Simplify the following sums.
  1.  $100111_2 + 11111_2$  (02 marks)
  2.  $100101_2 - 1001_2$  (02 marks)
- (4) Convert teh Hexa Decimal  $3D_{16}$  into Decimal. (02 marks)

04. R. U. K. Textiles is a recently developed one which started as a small industry. One worker kept the details of workers, their payings, buyings, storing and selling. Now they want to use computer system to keep records. The owner expect to give effective service to the customer, owners and to the bank by this.

- (1) a. Write two disadvantages in manual information system. (01 mark)
- b. Write four features of computerized information system. (02 marks)
- (2) Write the information system, system boundary, sub system, components and system environment according to above description. (02 marks)
- (3) What are the softwares can be used in this business industry. (02 marks)
- (4) You image as, you enter the employees data into table in this industry using data base software
  - a. Write four filed names can you use to design the table. (02 marks)
  - b. What is the most suitable field name to put the primary key in this table?(01 m.)

05. The sample spread sheet in follow shows the details of employers in a company.

	A	B	C	D	E	F
1	Name	No. of items sold	Commission for an item	Basic Salary	Commission	Gross salary
2	Kasun	10	15	3500		
3	Nuwan	12		3200		
4	Sujith	17		4000		
5	Amal	11		3500		
6	Ranil	09		3800		

- (1) Write the required formula in cell E2 to find the commission of Kasun. (02 marks)
- (2) Write how to calculate the each employee's commissions. (02 marks)
- (3) Write the required formula should enter the F2 for calculate the gross salary of Kasun. (02 marks)
- (4) Write the method or steps of calculating the gross salary of each one. (02 marks)
- (5) Write the formula should enter the F7 for calculating the total amount of gross salary. (02 marks)

06. There is a table shows the difference of change the temperature and nature of water.

Temperature	Nature of water
Less than or equal 0 °C	Ice
Less than 27 °C and greater than 0 °C	Cool water
Less than 100 °C and greater than 26 °C	Hot water
equal or greater than 100°	Stream

- (1) Draw a flowchart to represent to above incidence. (05 marks)
- (2) Write the pseudo code according that flowchart. (05 marks)

07. Write brief accounts on any four of the following titles.

- a. system development life cycle
- b. e-government concept
- c. Disadvantages of computer games
- d. Data transmission media
- e. Advantages of Network
- f. Computer memory

(2.5 x 4 = 10 marks)