

Science

Grade 08

විද්‍යාව

Time: 02 Hours

Name/ Index No.

Part - I

• Answer all questions.

01 The year, Sinharaja forest was named as a world heritage is,

- (1) 1988 (2) 1986 (3) 1989 (4) 1999

02 One of less poisonous serpents is,

- (1) Sri Lanka Krait (2) Hump nosed viper
(3) Water snake (4) 'Ahurukukka'

03 The standard unit of density is,

- (1) kg^{-1} (2) kgm^{-3} (3) gm^{-2} (4) gcm^{-3}

04 Following features can be seen in a,

- Trees are short and stunted
 - Trunks are twisted
 - Leaves are small
- (1) Thorny shrubs (2) montane forest
(3) tropical rain forest (4) wet land.

05 Percentage of CO_2 (Carbon dioxide) in air is,

- (1) 21% (2) 78%
(3) 72% (4) 0.03%

06 Following information are about one of poisonous arthropods.

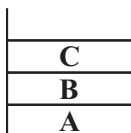
- highly poisonous
- body is covered with hair
- lives in places like tree holes, coconut trees, palm trees.
- carnivorous.

The Arthropode having these features is,

- (1) Scorpion (2) wasp (3) centipede (4) wolf spider

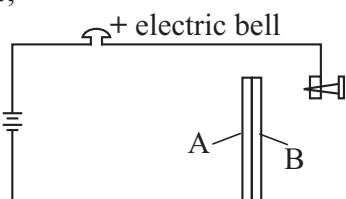
07 Following diagram shows a beaker with 3 liquids which are not mixed with one another.


Here, liquids A, B, C can be,



- (1) water, kerosene, mercury
(2) mercury, water, kerosene
(3) kerosene, water, mercury
(4) water, kerosene, mercury

- 08 Following diagram is a circuit with a bimetallic strip used for fire alarming instrument. Here, A and B are two metallic strips used to prepare the bimetallic strip. Two metals can be,



- (1) A - Aluminium B - Brass
 (2) B - Aluminium A - Brass
 (3) Both A and B are Aluminium
 (4) Both A and B are Brass
- 09 Constituent elements of water are,
 (1) Oxygen, Nitrogen (2) Carbon, Oxygen
 (3) Oxygen, Hydrogen (4) Hydrogen, Nitrogen
- 10 None of uses of Carbon dioxide gas is,
 (1) Producing cool drinks (soft drinks) (2) for fire extinguishers
 (3) for the respiration of organisms (4) for producing dry ice
- 11  This symbol represents,
 (1) a bulb (2) an electric cell
 (3) a switch (4) a LED bulb
- 12 The domestic chemical substance known as MSG is a,
 (1) germicide (2) pharmaceutical
 (3) cosmetic (4) food additive
- 13 A homo - atomic molecule is,
 (1) NH₃ (2) CO₂
 (3) O₂ (4) H₂O
- 14 E - 102 is a,
 (1) permitted paint (2) washing agent
 (3) permitted food testor (4) permitted colour for food
- 15 An instrument made by using the expansion of a liquid is,
 (1) Hydrometer (2) rain - gauge
 (3) Hygrometer (4) Thermometer
- Put (✓) mark at the correct statements and (X) at the false statements from the questions 16 - 20.
- 16 Surgical spirit is a germicide. ()
 17 Earth wire of a domestic electric circuit is red in colour ()
 18 Mercury is a metal in liquid state at room temperature. ()
 19 It is good to give king coconut when stung by a snake. ()
 20 Mangroves are plants grow associated with estuaries and lagoons. ()

(02 x 20 = 40 marks)

Part II

• **Answer 04 questions only.**

- 01 Sri Lanka is a small island known as the pearl in the Indian ocean. And it is rich with bio diversity and various climatic zones.
- (1) Name 02 natural eco-systems in our country. (02 m.)
 - (2) Name
 - (a) 2 types of plants (02 m.)
 - (b) 2 mammals can be seen in dry mixed evergreen forests. (02 m.)
 - (c) 2 districts that these forests can be seen in. (02 m.)
 - (d) Write a specific feature can be seen in trunk and root system of trees in these forests. (02 m.)
 - (3) Grasslands can be seen in every climatic zone, and they can be divided into 4 types according to climate. Name them. (02 m.)
 - (4) Mention 2 factors caused for considering wetlands as important eco-systems. (02 m.)
 - (5) What is the community of plants grow in estuaries and lagoons? (01 m.)
- 02
- (1) Write 02 common characteristics of matters. (02 m.)
 - (2) Write 3 physical states of matter. (03 m.)
 - (3) Draw 3 diagrams to show the arrangement of particles of matter in each state mentioned above. (03 m.)
 - (4) Write down the standard symbols of elements given below.
 - (a) Sodium
 - (b) Nitrogen
 - (c) Silver(03 m.)
 - (5) Mention an element used for each of following instances.
 - (a) for filling filament bulbs.
 - (b) in producing electric wires.
 - (c) when cutting glass and gems (03 m.)
 - (6) Mention a metallic element and a non - metallic element. (01 m.)
- 03
- (1) Define the word density' (02 m.)
 - (2) Write the standard international unit of measuring density and its symbol. (02 m.)
 - (3) Mass of a sphere prepared by Alluminium metal is 675 kg and its volume is 0.25 m^3 . Find the density of Alluminium. (03 m.)
 - (4) Mention 3 instances where differences in densities of substances are used to separate components from a mixture. (03 m.)
 - (5) Mention an action to be taken to prevent from the problems caused by expansion when construction concrete roads. (01 m.)
 - (6) A distended balloon kept under the sun for some time will blast. Describe the reason for this scientifically. (02 m.)
 - (7) Mention 2 electric equipments with auto heat controllers. (02 m.)

04 It brings many advantages of using standard symbols for the busy life of man. It can be used as a universal language.

- (1) Mention 2 advantages of using standard symbols. (02 m.)
- (2) Write down 4 fields that standard symbols are used. (02 m.)
- (3) Mention 3 facts to be concerned when using by preparing the standard symbols to display. (03 m.)
- (4) Draw the standard symbols used to illustrate the instances given below.
 - (a) Danger, Biological hazard
 - (b) Toxic
 - (c) No smoking
 - (d) Fire exit or emergency exit. (04 m.)
- (5) "Standard symbols are a universal language".
 - (a) Do you agree with this? (01 m.)
 - (b) Describe the reason. (02 m.)
- (6) There's a group of people who are not sensitive for standard symbols in pictures in any country. Who are they? (01 m.)

05 Man is the only group of animals who changes the natural environment. When it was changed it is a man-made environment.

- (1) Mention 3 man made environments. (03 m.)
- (2) Name one of environments mentioned above and write 2 special features of that environment. (02 m.)
- (3) Write down 2 sanitary problems can be seen in a human settlements with high population. (02 m.)
- (4) How many types of highly poisonous snakes can be seen in Sri Lanka? Name two of them. (03 m.)
- (5) Mention 2 actions to be taken when bitten by a poisonous animal. (02 m.)
- (6) What is the special feature of wolf spider one of poisonous arthropods? (01 m.)
- (7) The snakes 'mukalang thelissa', checkered keel ball, cat snake, python are belonging to non poisonous and mildly poisonous group. (02 m.)
 - (a) Name 2 non poisonous snakes
 - (b) Name 2 mildly poisonous snakes