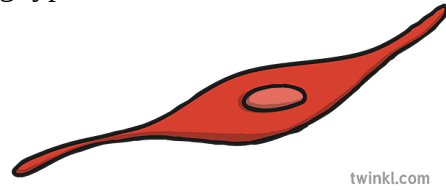


Activity Sheet (Living tissues part 02)

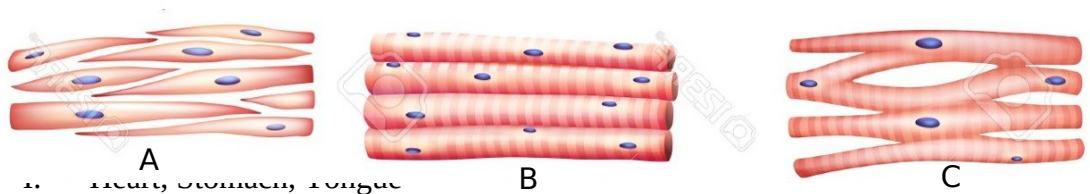
MCQ

1. The animal tissues that have the following type of cells is.

- I. A nervous tissue
- II. Epithelia tissue
- III. A muscle tissues
- IV. A connective tissue



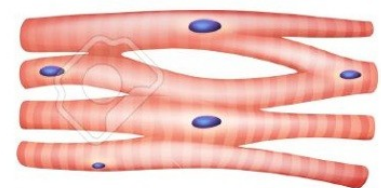
2. Following figures show three types of muscle tissues, named as A, B, C Find the answers with their locations correctly indicated.



- I. Heart, Stomach, Tongue
- II. Heart, Liver, Tongue
- III. Stomach, Neck, Heart
- IV. Skin, Tongue, Heart

3. A diagram of a muscle tissue is given blow. Select the option which gives correctly the name of the muscle tissue and its function.

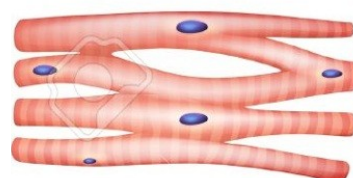
	Muscle tissue	Function
1	Cardiac muscles	Voluntarily Controlled
2	Skeletal muscles	Involuntarily Controlled
3	Skeletal muscles	Voluntarily Controlled
4	Cardiac muscles	Involuntarily Controlled

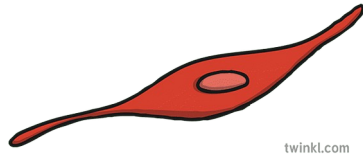


4. Which is correct about cardiac muscle fibers

- I. Non - Striated
- II. Posseses intercalated discs
- III. Multinucleate
- IV. Long, Cylindrical cells

5.





A

B

I. A and B are types of the animal tissues. Name an organ in which tissue A can be observed.

.....

II. Write a difference between tissues A and B

.....

6. A diagram of very important cell found in the body of vertebrates is given below.

a) What is the name of below given cell?

.....

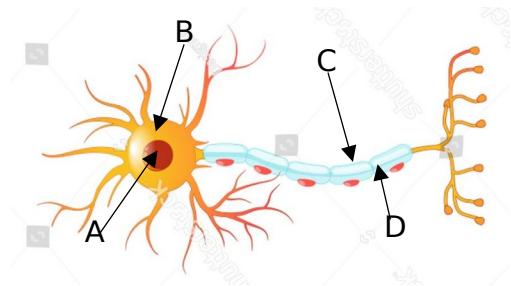
b) Name A, B, C and D in above diagram

A- .....

B- .....

C- .....

D- .....



c) What is the use of covering of D by C?

.....

7. Group of cells with a common origin that has been modified to perform particular function in the body is known as a tissue

I. Name the tissue given in the diagram

.....

II. Name A, B and C

A- .....

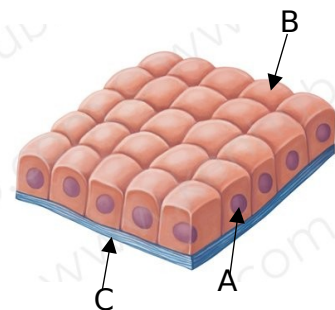
B- .....

C- .....

III. Write a common feature of this tissue

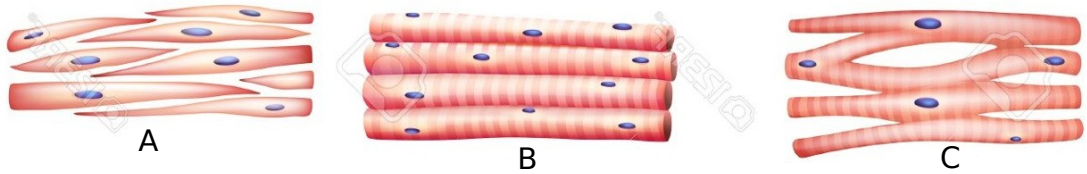
.....

IV. Write a function done by these tissues



.....  
.....

8. Diagrams of muscle tissue in the human body are given below.



a) Which tissue is controlled voluntarily and present striation

.....

b) State a place that tissue “A” can be seen

.....

c) State the letter of tissue that never become fatigue

.....

d) State structural similarity and difference between B and C tissues

Similarity: .....

Difference.....

9. What is building unit of nerve tissue of tissue of vertebrates?

.....

10. What is the neuron transmit impulses form central nervous system to effector (muscles)

.....

11. Blood is the important tissue among the connective tissues.

I. Write a structural feature of blood to consider it as a connective tissue

.....

II. What is the type of muscles that blood vessels are made up of?

.....

12. Mention the four types of animal tissues in the human body

13. What is meant by epithelial tissue?
14. Mention the features of epithelial tissue
15. Mention the location of epithelial tissue
16. What are the functions of epithelial tissue?
17. What are the two components of connective tissue?
18. What is the special of blood tissues?
19. What are the features of blood tissues?
20. Mention the function of blood tissues
21. What is the type of connective tissue that contain a fluid matrix?
22. Name two cells that make up the above tissue