

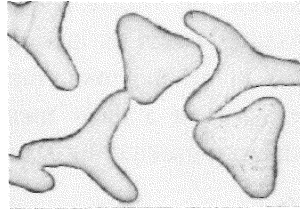
6. Which is the correct statement related to proteins?
- (1) Concentrated salts have no effect on the changes in the three dimensional structure of proteins.
 - (2) Protein complementation occurs by mixing several types of cereals in food processing.
 - (3) The antibodies which are important for the immunity of the body, do not have a protein origin.
 - (4) Actin and Myosin are two proteinous compounds which are important for the function of the muscles.
 - (5) The structure of protein contains the elements Carbon, Hydrogen, Oxygen, Nitrogen and Sulphur essentially.
7. From the following vitamins, which one is present only in animal foods?
- (1) Niacin (B_3)
 - (2) Pyridoxin (B_6)
 - (3) Riboflavin (B_2)
 - (4) Folic acid (B_9)
 - (5) Cyanocobalamin (B_{12})
8. Two hormones containing lipids are
- (1) Cortisone and Estrogen.
 - (2) Estrogen and Thyroxine.
 - (3) Cortisone and Insulin.
 - (4) Testosterone and Insulin.
 - (5) Thyroxine and Testosterone.
9. What is the correct statement regarding the foods in different groups?
- (1) Fish and dry fish contain high content of saturated fats.
 - (2) Lactose in milk is one of the main reasons for dental decay.
 - (3) Removal of bran due to polishing causes the loss of vitamins and minerals in all the types of rice.
 - (4) Fiber in vegetables reduce the absorption of cholesterol to the body.
 - (5) Of the animal proteins the biological value of proteins in egg white is low.
10. Micronutrients that cause deficiencies commonly found in Sri Lanka are
- (1) Iron, Vitamin A, Iodine and Zinc.
 - (2) Iodine, Vitamin A, Phosphorus and Zinc.
 - (3) Zinc, Vitamin K, Iodine and Selenium.
 - (4) Selenium, Vitamin A, Iron and Phosphorus.
 - (5) Phosphorus, Vitamin K, Selenium and Iron.
11. From the following, what is the correct statement about the process of the digestion of food?
- (1) Digestion of sucrose in foods starts in the mouth.
 - (2) Gastric juice contains the enzyme trypsin.
 - (3) Bile is important for the emulsification of fats.
 - (4) The pH value required for the function of enzyme lipase is about 3.
 - (5) Digestion of proteins in foods starts in the small intestine.
12. Consider the following facts.
- The consumption of, A - beverages containing caffeine.
B - foods rich in Vitamin D.
C - foods with soluble fiber.
D - foods containing phytic acid.
- From these the facts that **unfavourably** affects the absorption of calcium and magnesium to the body are,
- (1) A and B only.
 - (2) A and D only.
 - (3) B and C only.
 - (4) B and D only.
 - (5) C and D only.

13. What is the correct statement regarding malnutrition status Kwashiorkor and Marasmus?
- (1) Swelling of the face, abdomen and legs are the main symptoms of Marasmus.
 - (2) Both Kwashiorkor and Marasmus conditions can develop together at the same time.
 - (3) Lack of adequate protein intake from the foods leads to Marasmus condition of the child.
 - (4) The children aged less than 1½ years have a high tendency of getting Kwashiorkor.
 - (5) The disease Kwashiorkor is common among the children who live in populated urban areas of Sri Lanka.
14. Select the correct statement regarding the food pyramid and food plate used in meal planning.
- (1) One third of the food plate should be vegetables and green leafy vegetables.
 - (2) Food plate is introduced as food pyramid is incompatible for Sri Lanka.
 - (3) Dairy foods should be included in all the main meals and snacks consumed in a day.
 - (4) Food pyramid and food plate represent a daily meal of a person.
 - (5) Daily servings of animal foods is presented by one section of the food pyramid.
15. A correct way to control obesity is
- (1) skipping the daily meals.
 - (2) the consumption of more protein rich foods.
 - (3) drinking water before the meals.
 - (4) the consumption of yams as a substitute for rice.
 - (5) limiting the daily intake of foods only to the main meals.
16. Two types of foods that are most suitable for a patient suffering from high blood pressure and diabetes are
- (1) a piece of fruit cake, a glass of fat free milk.
 - (2) a piece of roasted fish, an Ambul plantain.
 - (3) a piece of savoury dry fish, a mixed vegetable salad.
 - (4) a slice of Kurakkan bread, a glass of mixed fruit cordial.
 - (5) a slice of low fat cheese, tempered Kohila curry.
17. To which category of additives does Sodium Nitrate used in food processing belong to?
- (1) Flavouring agents
 - (2) Curing agents
 - (3) Leavening agents
 - (4) Acidifying agents
 - (5) Emulsifying agents
18. A cooking method which uses conduction, convection and radiation as heat transferring methods is
- (1) frying.
 - (2) poaching.
 - (3) grilling.
 - (4) stewing.
 - (5) steaming.
19. Which of the following statements is correct regarding the browning reactions of foods?
- (1) There is no enzymatic influence on the Maillard reaction.
 - (2) Non enzymatic browning is named as the formation of astringency.
 - (3) A reaction of carbohydrates and proteins is needed for caramelization.
 - (4) All the browning reactions occur with the involvement of polyphenolic compounds in foods.
 - (5) In bakery products, the browning that occurs after glazing with eggs and baking is an enzymatic reaction.
20. The heat treatment method that destroys the food spoilage microorganisms as well as their spores is
- (1) blanching.
 - (2) sterilization.
 - (3) cooking/heating.
 - (4) Low Temperature Long Time pasteurization (LTLT).
 - (5) High Temperature Short Time pasteurization (HTST).
21. Which of the following situations uses technical textiles?
- (1) In agriculture
 - (2) In the garment industry
 - (3) In decorating buildings
 - (4) In preparation of curtains for offices
 - (5) In preparation of screens to separate the patients in hospitals

22. The three types of commercial stitches used in apparel industry are

- (1) lock stitch, hem stitch and covering chain stitch.
- (2) stem stitch, hand stitch and chain stitch (single thread).
- (3) hand stitch, lock stitch and chain stitch (single thread).
- (4) hem stitch, blanket stitch and covering chain stitch.
- (5) blanket stitch, stem stitch and over-edge chain stitch.

23. The following diagram shows the microscopic appearance of the cross section of a fiber. What is this fiber ?



- (1) silk (2) wool (3) linen (4) nylon (5) polyester

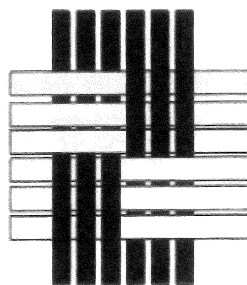
24. What kind of fiber gives a bead like residue after burning?

- (1) Silk (2) Linen (3) Decron (4) Asbestose (5) Cellulose

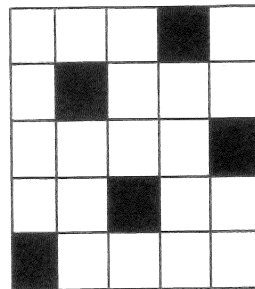
25. According to the classification of fibers the examples for synthetic fibers are

- (1) Rayon and Casein. (2) Aramid and Terylene. (3) Orlon and Casein.
 (4) Terylene and Orlon. (5) Spandex and Rayon.

26. The weaves shown in the diagrams A and B are respectively,



A



B

- (1) mat weave and satin weave.
- (2) regular twill weave and wavy twills.
- (3) weft-rib weave and satin weave.
- (4) mat weave and wavy twills.
- (5) weft-rib weave and regular twill weave.

27. Following are some statements regarding the overlock stitch used in Apparel Industry.

- A - Used in sewing designs on clothes.
 B - Used to finish the edges of clothes.
 C - No of threads 1, 2, 3, 4, 5 etc. could be used when sewing.
 D - Used in stretching areas of sports wear.

The correct statements from these are

- (1) A and B only. (2) A and C only. (3) A and D only.
 (4) B and C only. (5) B and D only.

28. The finish given to fabrics using an insoluble metallic compound is

- (1) water proof finish.
- (2) fire proof finish.
- (3) bullet proof finish.
- (4) anti bacterial finish.
- (5) chemical compound resistant finish.

29. What is the correct fact regarding communication?
- (1) Quick responses are obtained in written communication.
 - (2) The possibility of confirmation is low in written communication.
 - (3) It is easy to study again and again in oral communication.
 - (4) Raising the thumb is a non-verbal communication giving the consent.
 - (5) Use of signs to express ideas briefly is a component of verbal communication.
30. Consider following facts.
- A - The ethics of the various occasions remain unchanged.
 - B - The formal approach should always be followed when building up conversation.
 - C - The confidentiality of the information of an organization should be protected.
 - D - It is important to choose common topics when building up conversations.
- The correct facts from the above facts regarding ethics are
- (1) A and B only.
 - (2) A and C only.
 - (3) A and D only.
 - (4) B and C only.
 - (5) C and D only.
31. Number of National wild life parks in Sri Lanka which attract tourists are
- (1) 05.
 - (2) 10.
 - (3) 15.
 - (4) 20.
 - (5) 25.
32. A tour operator has organized a tour by a luxury cruise ship for a group of 500 passengers to visit the coral reefs of the pacific ocean. Which tourism stream does this belong to?
- (1) Alternative tourism
 - (2) Adventure tourism
 - (3) Mass tourism
 - (4) Eco-tourism
 - (5) Nature tourism
33. Consider following facts.
- A - Playing tennis.
 - B - Following a course in acting.
 - C - Engage in self-creations.
 - D - Engage in driving exercises.
- From these the recreational activities are
- (1) A and B only.
 - (2) A and C only.
 - (3) A and D only.
 - (4) B and C only.
 - (5) C and D only.
34. From the following select the correct statement regarding tourism.
- (1) Tourism within different geopolitical zones is Intraregional tourism.
 - (2) Tourism within and outside the country by residents of a particular country is National tourism.
 - (3) Tourism within the country by residents and Non-residents of a particular country as guests is Domestic tourism.
 - (4) Tourism within the country by residents of a particular country as guests is Internal tourism.
 - (5) Tourism outside the country by residents and non-residents as guests is Outbound tourism.
35. Examples for man made attractions are
- (1) Beautiful scenes, Museums and Rubber plantations.
 - (2) Rubber plantations, beautiful scenes and National parks.
 - (3) Conserved areas, Tea Industry and Museums.
 - (4) Handy crafts, Tea Industry and Cultural events.
 - (5) Cultural events, Handy crafts and National parks.
36. Which of the following statements is correct regarding tourists?
- (1) Tourists usually spend about three weeks in Sri Lanka.
 - (2) A large percentage of tourists travel with their children.
 - (3) Most of the tourists prefer travelling to far away countries.
 - (4) Most of the tourists tend to resort to package tours.
 - (5) Most of the tourists pay attention to their professional activities during the tour.

44. Some statements connected to functional foods and the biologically functional components in them are given below.

- A - Some times new components are added to foods so as to obtain functional foods.
- B - Pre-biotic avoids the growth of harmful bacteria in the digestive system.
- C - Two biologically functional components abundant in foods are amino acids and antioxidants.
- D - Biologically functional components are always produced by genetical modification.

The correct statements from these are

- (1) A and B only.
- (2) A and C only.
- (3) A and D only.
- (4) B and C only.
- (5) C and D only.

45. What is the characteristic specific to the adolescence?

- (1) Try to be independent
- (2) Show a liking to be isolated
- (3) Express drawback in moral development
- (4) Act with the feeling of superiority
- (5) The maturity of physical, emotional and mental development increases

46. The psychologist who defined the range of age for adolescence as 13 years to 18 years is

- (1) Gesell.
- (2) Stott.
- (3) Hurlock.
- (4) Jean Piaget.
- (5) Sigmund Freud.

47. Following are some characteristics seen in families.

- A - Chances are given to the child to participate in the daily household chores
- B - Impose rules and regulations according to parents' wishes
- C - Guidance is given to the child in problematic situations
- D - Competitive nature among the siblings

The characteristics which help in increasing the self esteem of the child are

- (1) A and B only.
- (2) A and C only.
- (3) A and D only.
- (4) B and C only.
- (5) C and D only.

48. A cognitive characteristic shown by an adolescent with mental stress is

- (1) laziness in action.
- (2) guilty feeling.
- (3) the tendency to avoid the company of others.
- (4) not responding to common situations.
- (5) weaknesses in remembering subject matters.

49. Following are some facts presented about quality control of products.

- A - It is compulsory to obtain the SLS certification for large scale productions.
- B - Social ethics and social responsibilities should be emphasized in an enterprise.
- C - The entrepreneur can decide the labelling according to his wishes.
- D - Product storage should be decided on the nature of packaging materials.

The correct fact/facts from them is/are

- (1) A only.
- (2) B only.
- (3) A and D only.
- (4) B and C only.
- (5) C and D only.

50. A fact to be emphasized in planning a small scale business is

- (1) aiming at high goals.
- (2) to follow a successful business.
- (3) to use only the five S (5S) concept.
- (4) to get involved in new products according to the success of the business.
- (5) that by increasing only the monetary inputs productivity could be increased.