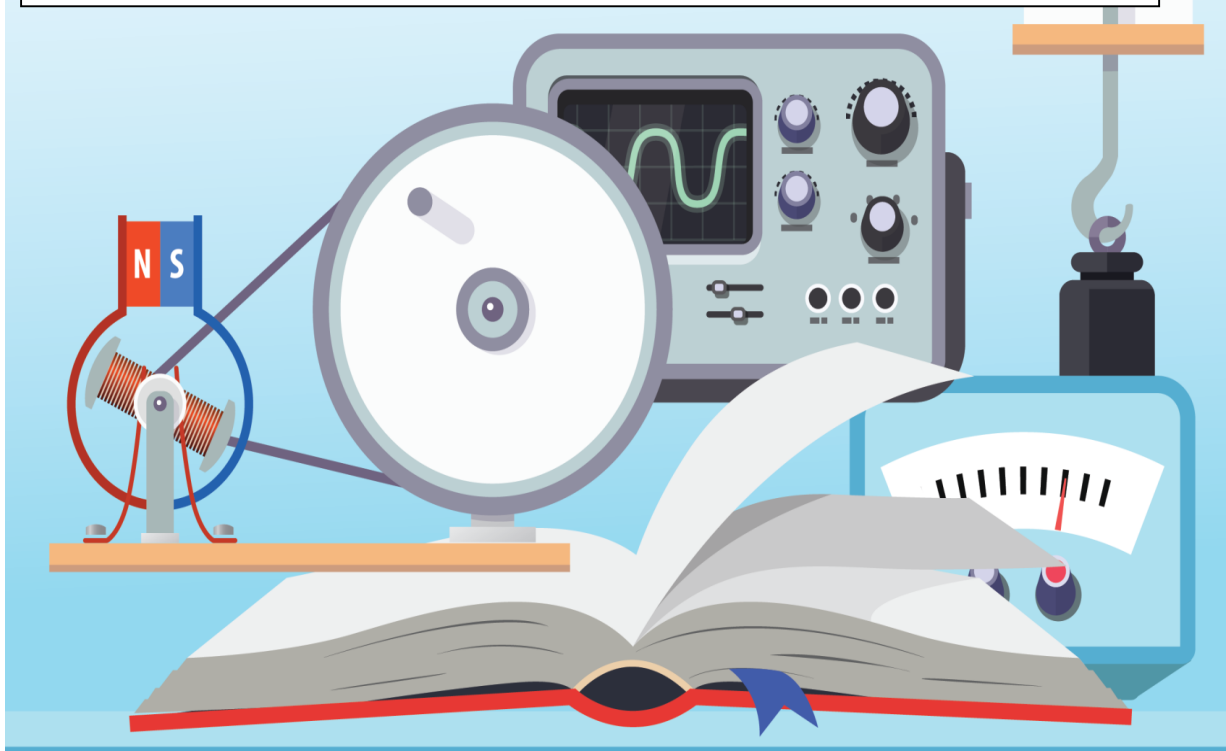


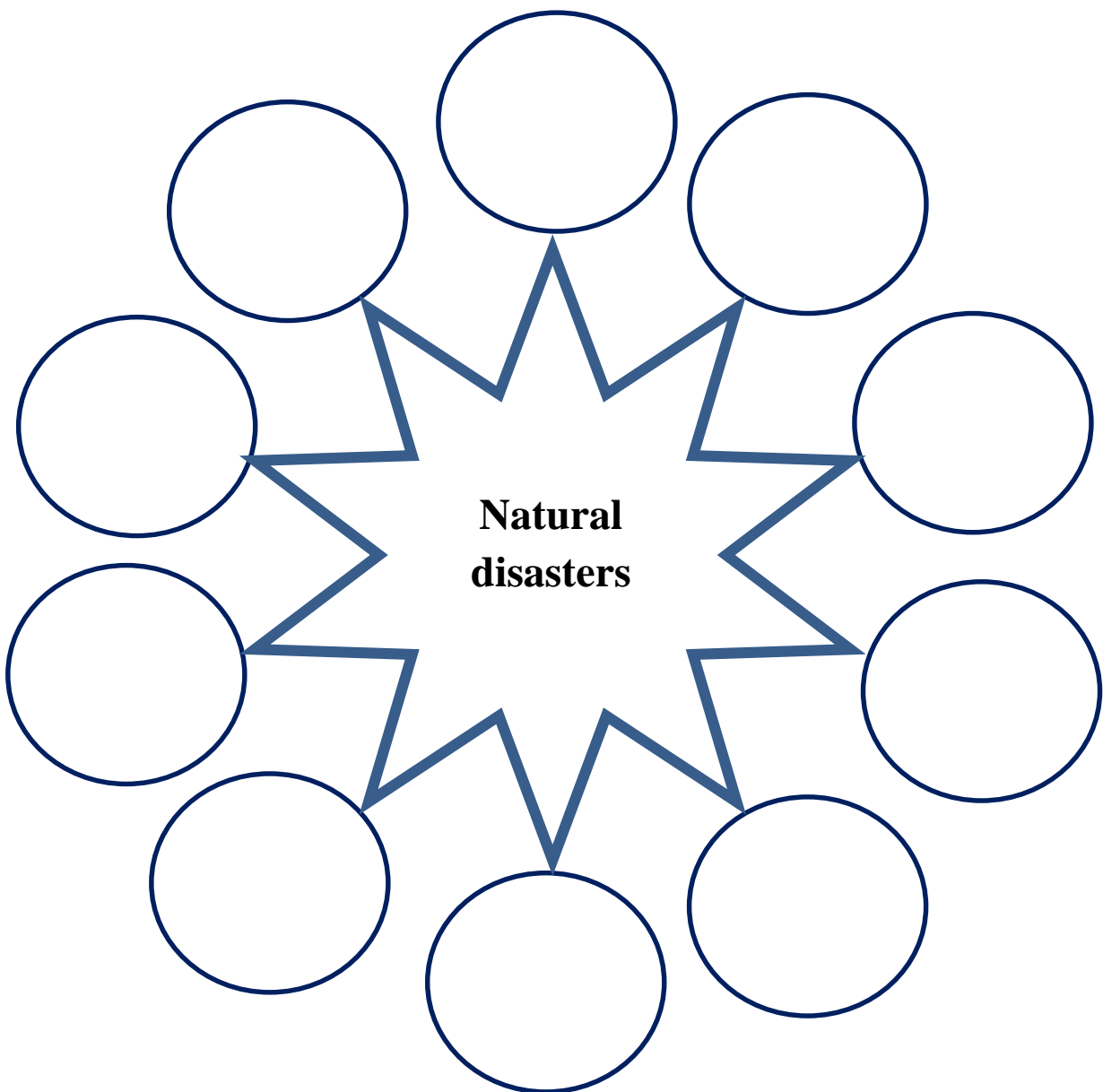
Subject - **Science**
Grade - **8**
Competency - **04**
Competency level - **4.3**
Lesson - **15, Natural Disasters.**



Activity 01

“Natural disasters are naturally occurring destructive incidents without the mediation of man causing harm to human lives property environment and economy.”

- ❖ Complete the following chart including natural disasters that affect the earth.



Drought

- ❖ Long term decrease of rain falls, due to the change of the pattern of rain fall is known as drought.

Collect more information about droughts from your elders and make a small note about it.

If you have facilities try to watch the following documentary programmers using given links.

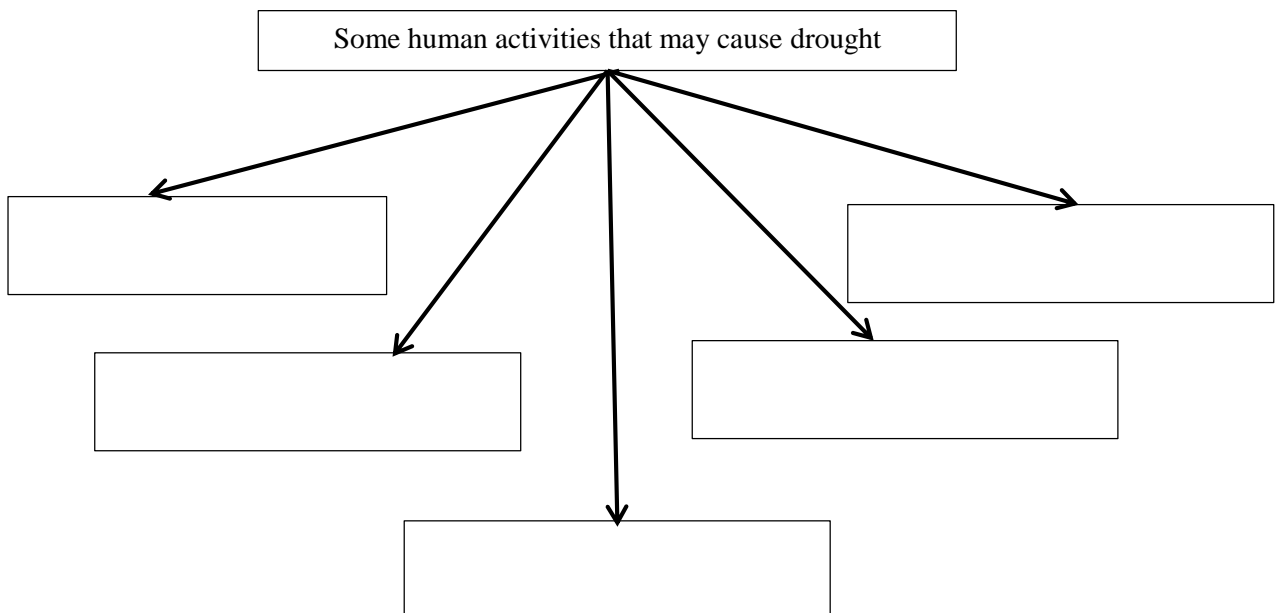
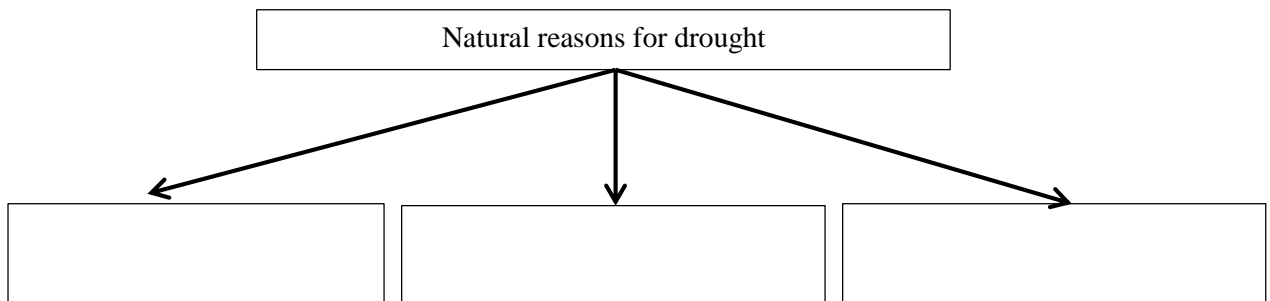
<https://www.youtube.com/watch?v=Tly6SYb8oiU>

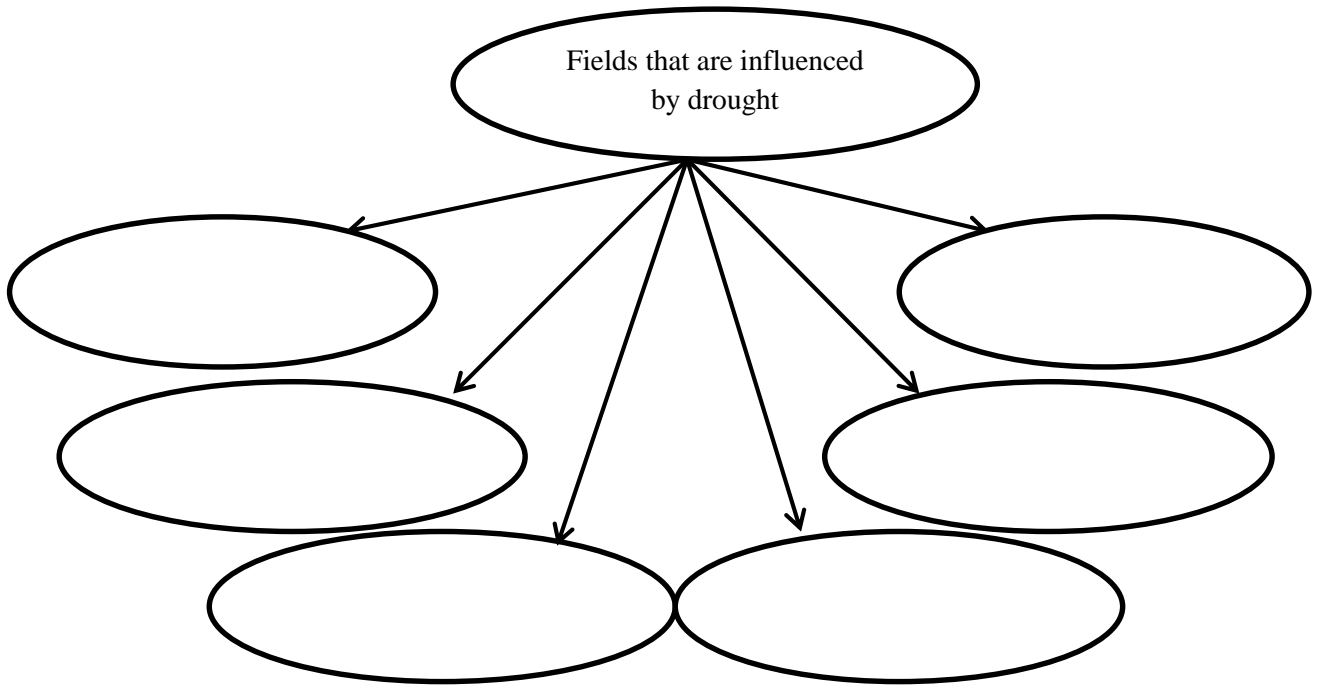
<https://www.youtube.com/watch?v=8ua9RFgX7JM>

<https://www.youtube.com/watch?v=9NoMgYOZAso>

Activity 02

- ❖ Complete the following charts using your text book.





❖ Complete the following table about drought disaster management.

	Step	Example
01	Avoiding the wastage and pollution of water.	Introducing rules and regulation.
02		
03		
04		
05		

Floods

❖ **Inundation of a usually inundating area, due to heavy rainfall in a short period of time is called a flood.**

Activity 03

❖ Study the part of flood in natural disasters (15th lesson). Collect information on flood using hyperlinks given below , if you have facilities.

- <https://www.youtube.com/watch?v=AEuUEgSu1bE>
- <https://www.aljazeera.com/videos/2018/05/24/sri-lanka-deadly-floods-displaced-hundreds-of-thousands/>

❖ What are the two categories of flood?

1.
2.

❖ What are the reasons for floods?

1.
2.
3.
4.
5.

❖ Impacts of floods.

1.
2.
3.
4.
5.

❖ Considerations in flood disaster management.

1.
2.
3.
4.
5.

Land Slide

Moving soil layer down in an upper elevation of a slope is land slide.

Activity 04

❖ Study the lesson land slide on text book. If you have facilities study on following hyperlinks and observe the way of occurring land sides

<https://www.youtube.com/watch?v=ztVIBIDnYfI>

<https://disaster.lk/aranayaka/>

<https://www.youtube.com/watch?v=mknStAMia0Q>

❖ Write 5 signs prior to landslides.

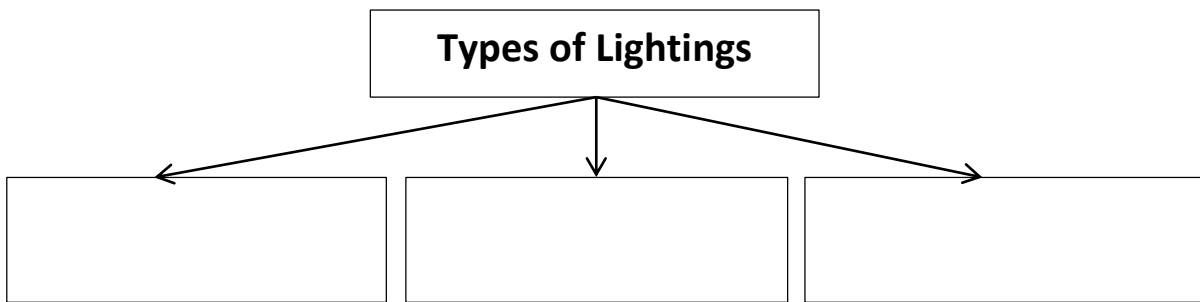
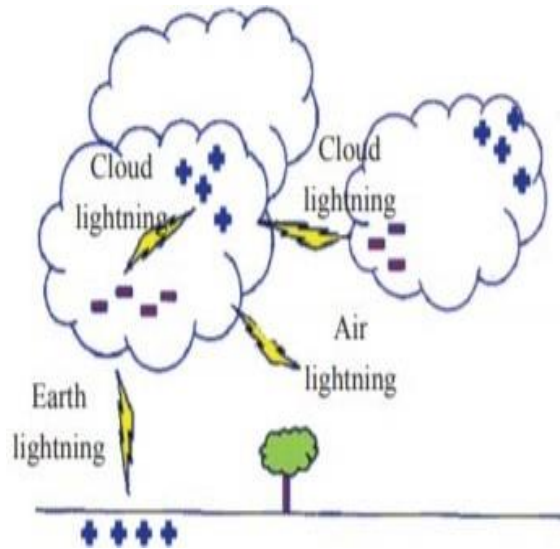
.....
.....
.....
.....
.....

❖ What are the factors should be considered when managing a landslide.

.....
.....
.....
.....
.....

Lightning

Small water drupel and ice crystals nimbus clouds are charged when rubbing with air currents. Positive charges are collected in the top and negative charges are collected in the bottom of clouds. Positive charges are generated on the surface of the earth right below that cloud. When the charges are collected to a certain level, it makes an electric discharge between them. It is known as a lightning.



What are the things that should be followed when lightning threat has forecast?

.....

.....

.....

.....

.....

.....

.....

Write the things those should be followed and should not be followed during the lightning?

.....

.....

.....

.....

.....

.....

.....

.....

Write the steps of ponding first aid to a person subjected to lightning hazard.

.....

.....

.....

.....