

Sri Jaywardanapura Educational zone

Mid term evaluation – 2014


Grade 8

Science – paper I

Answer all the questions on the paper itself

Duration : - 2 hours

Underline the most suitable answer from question number 1 to 20

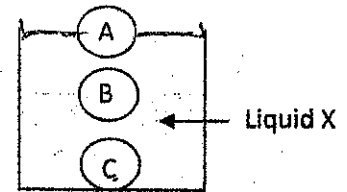
01. The load of sediment and silt brought down by the river is deposited near the mouth of estuaries is known as ?
- 1). A delta
 - 2). A lagoon
 - 3). A pond
 - 4). An island
02. The forest those found at height of 900m above the sea level and the annual rainfall is about 4000mm and subjected to strong winds and the tree trunk stunted. Choose the correct forest type
- 1). Dry mixed ever green forest
 - 2). Tropical rain forest
 - 3). Montane forest
 - 4). Dry mixed forest
03. Highly venomous serpent to man is
- 1). Polonthelissa
 - 2). Mudukarawala
 - 3). Mapila
 - 4). Polmalkarawala
04. What is the symbol below , that is associated with scientific laboratories
- 1). Highly inflammable
 - 2). Substance which can explode
 - 3). Can explode by vibrating or catching fire
 - 4). A substance react with other substances and release high amount of heat
- 
05. The scientific symbols of sodium , carbon and oxygen respectively
- 1). S,C,O
 - 2). S, K,O
 - 3). Na , C, O
 - 4). Na , K, O
06. A common characteristic feature of solid , liquid and gas is
- 1). Having a definite volume
 - 2). Having a mass
 - 3). Can be compressed
 - 4). Having a definite shape

07. The scientific international symbol for density is

- 1). g cm^{-3} 2). gcm^3 3). kgm^{-3} 4). kgm^3

08. The diagram shows, three objects A, B and C within the liquid X, which object having the equal density to the liquid X?

- 1). A 2). B 3). C 4). A and B



09. Which of the following is a monoatomic gas?

- 1). Oxygen 2). Chlorine 3). Helium 4). Hydrogen

10. Which of the following is a disinfectant

- 1). Surgical spirit 2). Phenol 3). Boric acid 4). Hydrogen peroxide

11. What is the fact given by "E- number" in relation to food

- 1). Purity 2). Standard
3). Safety 4). Permitted preservatives, dyes and flavourings

12. In which instance that the permanent magnet is used

- 1). The compass 2). Land phone 3). The electric kettle 4). The electric bell

13. Which animal show complete metamorphosis

- 1). Mosquito and cockroach
2). Mosquito and house fly
3). House fly and cockroach
4). Cockroach and beetle

14. The correct statement that shows the disease and the vector is

- 1). Malaria – Culex
2). Dengue – Anophilus
3). Filaria- Culex
4). Chicken gunya – Culex

15. What is the type of microorganisms that "mushroom belong to"

- 1). Fungi 2). Bacteria 3). Algae 4). Protozoa

16. What is the lowest layer of the atmosphere?

- 1). Stratosphere 2). Troposphere 3). Mesosphere 4). Thermosphere

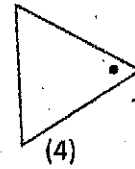
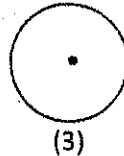
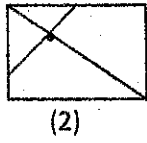
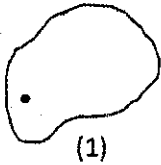
17. What is the gas that exist with the highest percentage in the atmosphere

- 1). Oxygen 2). Nitrogen 3). Carbon dioxide 4). Noble gases

18. As a science student , which of the following you should not do

- 1). When cleaning the home garden, do not harm to any organisms (Animals and plants)
- 2).Daily collected garbage used to make composite
- 3).when you find polythene , destroy them by burning
- 4). Multiple cropping within the home garden

19. Select the answer in which the gravitational point is correctly marked in the diagram



20. What is meant by the plasticity of clay

- 1). Can withstand high temperature
- 2). Turning in to red when burnt
- 3). Ability to make in to any required shape
- 4). Increase in the strength

Science – paper II
Answer first question and four other questions

1). For an assessment, the science teacher grouped the students in to four and gave instruments, to do a panel discussion. The topics given to teach group leaders are given below.

Group A – stage of life cycles and how these stages control, for own good of human being

Group B – Controlling the factors affecting the cultivation of crops for getting optimal usage

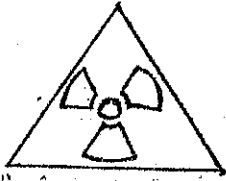
Group C – Effects of biotic factors on the environment

Group D – Effect of abiotic factors on the environment

- i). How do you prepare your groups for the panel discussion, state in four steps (2marks)
- ii). Group A introduces a phenomena metamorphosis. What is meant by that (2 marks)
- iii). Name four animals can be taken as examples to explain the phenomena metamorphosis(4 marks)
- iv). a). Out of the above four animals, name one animal that spread diseases to human being(1 mark)
b). Draw it's life cycle using an arrow diagram with words(1 mark)
- v). a). To control the harmful effects to human being; name two controllable stage of the life cycle of that animal above (iv) a(1 mark)
b). How do you control those two stages mentioned above(1 mark)
- vi). Group B introduces “ green house cultivation “ Give two advantages of this greenhouse cultivation(2 marks)
- vii). As the groups C and D explained , name two biotic factors and two abiotic factors affect the environment($1/2 \times 4 = 2$ marks)

total marks = 16

02).



- i). Mention the field that the above symbol is used (2 marks)
- ii). Name three fields that use international scientific symbols (3 marks)
- iii). Draw a symbol and express the idea of that symbol (3 marks)
- iv). Give two points that we have to pay attention , when using symbols(2 marks)
- v). Why do we consider symbols as international language(1 mark)

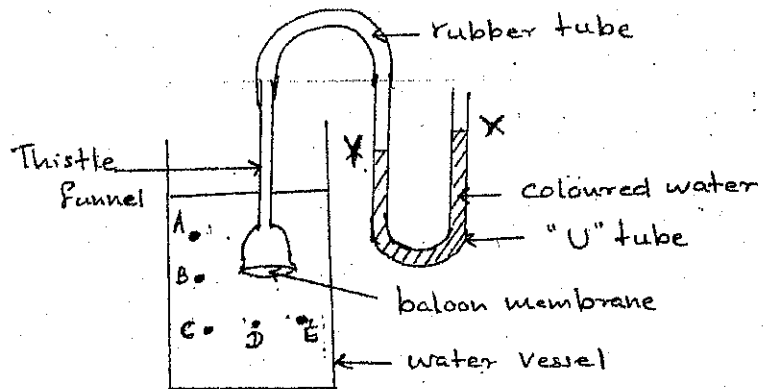
(total marks = 11)

3). An Estuary is a specific environment contained brackish water .saline water and fresh water get mixed together to form brackish water

- i). Name one animal and a plant associated with estuary(2 marks)
- ii). Name two environments that contain.
 - a). saline water
 - b). fresh water(2 marks)
- iii). Give two harmful effects to aquatic environment by human being (2 marks)
- iv). Thorny shrubs and scrublands could be seen in mannar .mullativu and in wilpattu
 - a). State two characteristics of thorny shrubs and scrublands(1 mark)
 - b). Name two plants species , that could be seen in thorny shrubs and scrublands(2 marks)
 - c). Scorpion and viper are venomous animals can be found these forests
Name the animal category of these animals(2 marks)

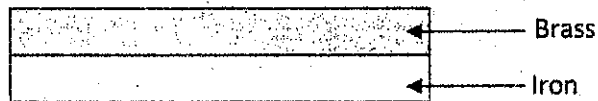
(11 marks)

4. A. i). What is meant by pressure?(1 mark)
 ii). What is the international standard unit of pressure ?(1 mark)
 iii). "Liquid pressure acts in all directions " to prove that draw a diagram and label it(2 marks)
 iv). The apparatus below used to measure the liquid pressure



- a). what can you observe , when you keep the thistle funnel at the place A, and C(1mark)
 b). what is the observation you get when you bring the thistle funnel to places C,D and E(1 mark)
 c). write two instances where decreasing pressure is used ($1/2 \times 2 = 1$)

B). Bimetallic strip shown below is made up of brass and iron



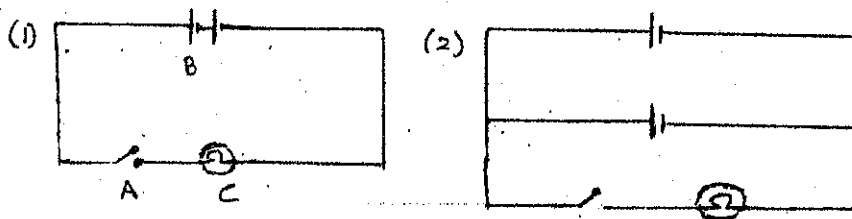
Before heating

i). Draw and label the diagram to show how the bimetallic strip would be observed after heating (2 marks)

ii). Name two instrument that use the bimetallic strips (2 marks)

(11 marks)

05). A). Following diagram show two kinds of electrical circuits



- i). Name the component A , B and C of the above circuit (3 marks)
- ii). In diagram (1) and (2) what is the method used to connect batteries?(2 marks)
- iii). Which method is used to connect batteries in your torch at home?(1 mark)

B).

- i). write down the observations in the following instances
 - a). bringing north pole of one magnet towards the north pole of another magnet
 - b). bringing north pole of one magnet towards the south pole of another magnet(2 marks)
- ii). Name two materials that are used to make magnets (2 marks)
- iii). Magnets, having magnetic power, until the current supply is available are known as electromagnets. Give two instances where electromagnets are used in day to day life (1 mark)

6). A). Matter can be divided in to two groups as elements and compounds.

- i). Give the symbols of the following elements and compounds
 - a). Sulphur
 - b). Aluminium
 - c). Carbon
 - d). Iron (1/2 × 4= 2 marks)
- ii). categorise the above elements under metals and non-metals
 - a). metals
 - b). Non-metals (2 marks)
- iii). Give two characteristics of metals (2 marks)

B). Different type of elements chemically combine to form compounds

- i). Sodium chloride, carbon dioxide and water are examples for compounds
Give one instance, where each of these elements used in day to day life
 - a). Sodium chloride
 - b). Carbon dioxide
 - c). Water (3 marks)
- ii). Name two homo atomic molecules (2 marks)

(11 marks)