



Provincial Department of Education - NWP
Provincial Department of Education - NWP
Provincial Department of Education - NWP
Provincial Department of Education - NWP
Provincial Department of Education - NWP
Provincial Department of Education - NWP
Provincial Department of Education - NWP
Provincial Department of Education - NWP
Provincial Department of Education - NWP
Provincial Department of Education - NWP

දෙවන පෙරළි පரීක්ෂණ දෙපාර්තමේන්තුව
Provincial Department of Education - NWP

22 E I

Second Term Test - Grade 13 - 2018

Index No. **Geography I** **Two Hours**

- Answer all the questions.
- Write the correct number of the correct choice in the bracket.

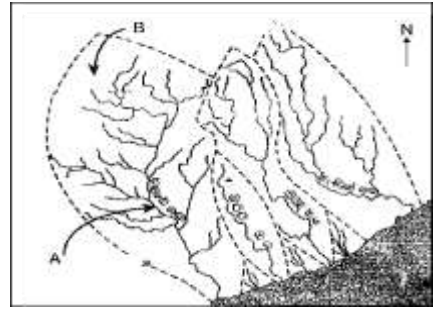
Part - I

- 1000Km² parts of topographical maps of 1:50000 scale are again divided in to 25parts. Select the scale used to divided in to 25 parts.
i. 1 : 25000 ii. 1 : 10000 iii. 1 : 100000 iv. 1 : 63360 v. 1 : 5000 (.....)
- Which answer contains the real land area covered by 6cm x 6 cm area in a topographical map of 1:50000 scale.
i. 8 km² ii. 18 km² iii. 9 km² iv. 36 km² v. 13 km² (.....)
- Select the physical and cultural features represented by black colour broken line (-----) in the topographical map.
i. Jeep road and foot path ii. Water divide and rail road iii. Spur and foot path
iv. Water divide and foot path v. Valley and rail road. (.....)
- Which one of the following cartographical techniques can be used to present continuous data ?
i. dot map ii. line graph iii. divided circle
iv. Multiple bar graph v. Clock graph (.....)
- What is the answer that contains only primary sources.
i. Questionnaire, topographical map, bank report.
ii. Interview, observations and questionnaire, investigation
iii. Landuse map, diary, administrative report
iv. Documentary film, papers, magazine
v. Computerize report, papers, journals (.....)
- In the topographical map, when presenting relief if contours bend towards the highland area, that feature is called.
i. Valley ii. Dissected plateau iii. Undulating land
iv. Spur v. Water divide (.....)

7. Letters A and B in above figure shows features associated with drainage. They are respectively.

- i. river system and water divide
- ii. Catchment area and mountain slope
- iii. river system and water fall.
- iv. tributary and catchment area.
- v. river system and catchment area

(.....)



8. What is the main drainage pattern found in rivers in South western parts of Sri Lanka.

- i. linear drainage pattern
- ii. dendritic drainage pattern
- iii. trellis drainage pattern
- iv. radial drainage pattern
- v. annular drainage pattern

(.....)

9. Where is the master control station of GPS a modern cartographical techniques, located ? ,

- i. Hawaiian Islands
- ii. Diego Garcia
- iii. Ascension Island
- iv. Colorado in USA
- v. Seychells Island

(.....)

10. In remote sensing, what is the name given for the techniques in which sensors are placed on a ladder tall building etc.

- i. a method of obtaining aerial photographs.
- ii. airborne platform
- iii. ground – base platform
- iv. space – base platform
- v. a method of obtaining satellite image.

(.....)

11. The amount of water vapour that a unit of air can hold under a given temperature condition is known as,

- i. absolute humidity
- ii. Humidity
- iii. latent heat
- iv. relative humidity
- v. Dew point

(.....)

12. Which answer correctly shows the main metamorphic rock types.

- i. quartz, marble, slate, shiest
- ii. slate, limestone, basalt, shale
- iii. shiest, slate , limestone, basalt
- iv. quartz, marble, slate, basalt
- v. marble, sandstone, quartz, shale

(.....)

13. Select the process in which river transport its load.

- i. abrasion, corrosion, traction
- ii. solution, deposition, traction
- iii. traction, saltation, suspension
- iv. corrosion, saltation. solution
- v. deposition, corrosion, solution

(.....)

14. Which of the following is a reason for the occurrence of El-Nino phenomena.

- i. graduall decreasing of temperature in Pacific ocean.
- ii. Sudden decreasing of temperature in Indian ocean.
- iii. Increasing temperature gradually in Atlantic ocean.
- iv. Increasing temperature suddenly in Pacific ocean.
- v. Increasing temperature gradually in Indian ocean.

(.....)

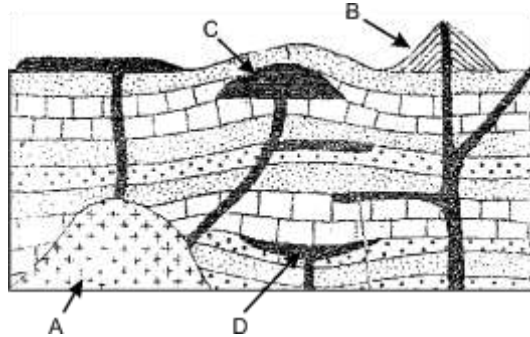
15. A landform formed due to the process of water in desert area.

- i. Barchan
- ii. Wadi
- iii. Yardang
- iv. Star sand dune
- v. Loess deposit

(.....)

16. 'Sea floor is spreading in mid Atlantic Ocean area' Select the statement that is related to above statement.
- Closer to transverse plate boundary.
 - has a convergent plate boundary.
 - had both convergent and divergent boundary.
 - destructive plate boundary
 - divergent plate boundary. (.....)

17. Following figure shows a group of volcanoes. Select the answer that contain correct order of ABCD landforms.



- A – Bacolith B - Lacolith C - Pacolith D – Lava Cone
 - A – Bacolith B - Pacolith C - Lacolith D - Lava Cone
 - A – Pacolith B - Bacolith C - Lacolith D - Lava Cone
 - A – Bacolith B - Lava Cone C - Lacolith D – Pacolith
 - A – Lacolith B - Bacolith C - Pacolith D - Lava Cone (.....)
18. Select the two layers of atmosphere in which temperature decreases gradually with altitude.
- troposphere and stratosphere
 - troposphere and stratopause
 - Mesosphere and tropopause
 - tropopause and stratopause
 - troposphere and mesosphere (.....)
19. What are the two plates that meet near the San Andreas fault ?
- Scocia and Nazca
 - Arabian & Eurasian
 - Arabian and Eurasian
 - Pacific and North America
 - Nazca and Colose (.....)
20. What are the two African areas in which tropical rainforest are seen ?
- West Africa, Indonesia
 - Congo area and Madagascar
 - Amazone and Borneo Island
 - Congo and Borneo Island
 - Califonia and Congo area (.....)
21. What is the districts that has highest rural population in Sri Lanka.
- Mannar
 - Sri Lanka
 - Kandy
 - Kegalle
 - Vavuniya (.....)
22. Select the factor that is related to green revolution in expansion of world food production.
- Increasing land area
 - Use of gene technology
 - Following irrigational method.
 - Storing harvest properly.
 - Production of high yielding new seeds. (.....)
23. What is the world famous country that adapted policies in marketing of agricultural products.
- Russia
 - USA
 - Europe
 - India
 - China (.....)

24. Select the type of mineral sand which obtaining from internal area in producing mineral sand in Sri Lanka.
- | | | | |
|-------------|--------------|------------------|---------|
| i. Rutile | ii. Ilmanite | iii. Silica Sand | |
| iv. Zircorn | v. Pospbate | | (.....) |
25. New densely populated zone which included in to modern population concentration in the world.
- | | | |
|---------------------------------|--------------------------|---------|
| i. North – Western Europe | ii. South – African area | |
| iii. South – eastern Asian zone | iv. South – Asian zone | |
| v. South – American zone | | (.....) |
26. Which features of population are changed with the time.
- | | |
|---|---|
| i. Growth, size, composition, trends | ii. Distribution, migration size, composition |
| iii. Size, growth, distribution, composition | iv. Size, composition, trends, growth rate |
| v. Migration, growth rate, trend, composition | (.....) |
27. Which answer contain the correct features that are found in rurban area.
- | | |
|--|---------|
| i. flats, commercial activities | |
| ii. hub of main transportation, collapsing industries. | |
| iii. rapid migration, residential expansion. | |
| iv. Industrialization, low residential facilities. | |
| v. Industrial collapse, flats. | (.....) |
28. Select the ascending order of energy sources that used in abundance in cooking in Sri Lanka.
- | | |
|------------------------------------|-----------------------------------|
| i. LP gas, electricity, firewood | ii. LP gas, firewood, biogas. |
| iii. Kerosene, LP gas, electricity | iv. Firewood, electricity, LP gas |
| v. Firewood, LP gas, Kerosene | (.....) |
29. The dominant company in the marketing of world agro product is,
- | | | |
|--------------|---------------|----------|
| i. Dupoint | ii. Cargill's | iii. CIC |
| iv. Monsanto | v. Browns | (.....) |
30. Present largest migration stream in the world is found in,
- | |
|--|
| i. towards Latin America from West Africa. |
| ii. towards South Europe from North Africa |
| iii. towards North America from East Asia. |
| iv. towards Australia from South Asia. |
| v. towards North America from West Europe. |
| (.....) |

Second Term Test - Grade 13 - 2018

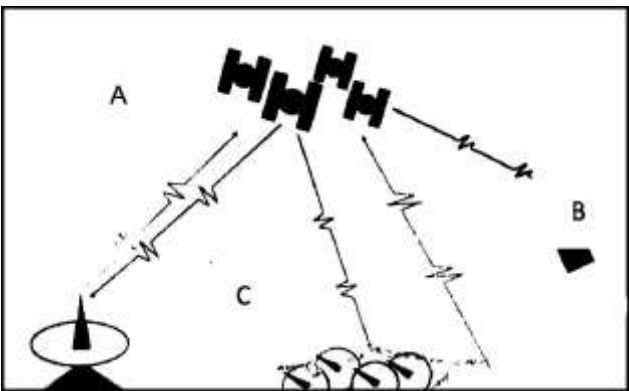
Index No. **Geography I**

Part - II

- **Answer two questions only. Selecting No. 1 and one question from questions 2 and 3.**

- 01). Using the part of topographic map of 1:50000 scale provided, answer the following questions.
- Calculate the area in Km of the north eastern quarter. (2 marks)
 - Present 3 factors to determine to which direction the slope of the map is ? (2 marks)
 - Name administrative boundary marked as A-B line. (1 mark)
 - With the help of sketch diagrams, Explain 3 factors about the relationship between relief and land utilization. (6 marks)
 - Calculate the distance of main road in Km which runs parallelly to the coast. (1 mark)
 - Discuss the physical features that have influenced the location and distribution of Settlement. (4 marks)
 - Name the physical features marked as no. 1 and cultural features marked as no. 2 and 3. (4 marks)

- 02). i. What is Remote Sensing ? (3 marks)
- ii. Name the components of GPS marked as ABC in the following diagram. (3 marks)
- iii. Discuss 4 advantages of modern cartographical techniques on cartography. (8 marks)
- iv. Explain 3 problems that have to be faced in using data without updating. (6 marks)



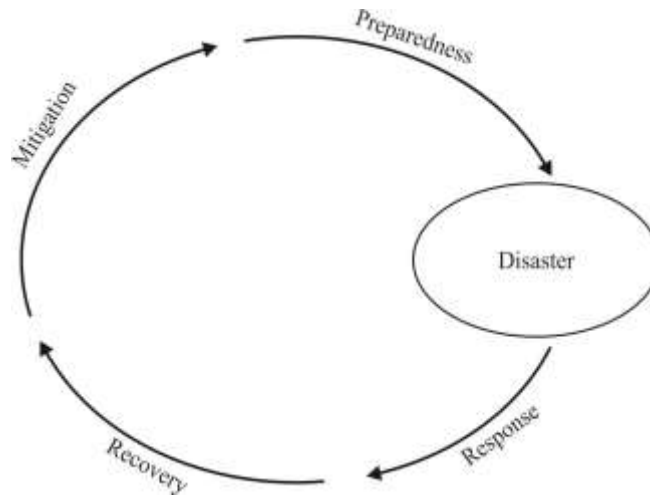
- 03). i. Write 02 measurements of central tendency and 02 measurements of variability in organizing and interpreting data in statistics. (4 marks)
- ii. Calculate mean deviation separately for Africa and North America using data table below. (6 marks)
- iii. Create dual bar graph using data table used in part (ii) above. (6 marks)
- iv. State 04 special features of data table with the help of graph you created. (4 marks)

Growth of population in Africa and North America (by millions.)

Year	Africa	North America
1970	356	232
1980	467	255
1990	619	282
2000	794	314
2010	997	342
2020 (Projected)	1231	370
Total	4464	1795

Source – United Nation's report.

- 04). i. State the difference between natural hazard and disaster. (6 marks)
- ii. Name 03 natural disasters that occur suddenly and write 2 areas for each they are abundantly seen in the world. (4 marks)
- iii. Explain giving examples 02 influences on human society and physical environment that caused by natural disasters. (3 marks)
- iv. A model of disaster management cycle is shown below. Explain the steps that are followed in each phases in the cycle according to the various natural disasters. (7 marks)



Part – II (Human Geography)

International Migration

Year	Total Migrants (Million)	Total World Population (Million)	Migration as a Percentage of Total World Population
1965	75.0	3,300	2.3
1970	81.5	3,800	2.2
1975	87.0	4,000	2.2
1980	99.8	4,500	2.2
1985	105.0	4,850	2.2
1990	154.8	3,300	2.9
1995	165.1	5,700	2.9
2000	174.9	6,115	2.8
2005	190.6	6,512	2.9
2010	213.9	6,909	3.0
2015	228.2	7,333	3.2

- 05). i. According to the table above, Name 3 special features that can be seen in international migration during the period of 1965-2010. (3 marks)
- ii. Name 05 countries where international migrants are abundantly found? (5 marks)
- iii. Explain with examples how population migration affect the size, composition and growth of population in a country. (6 marks)
- iv. Describe 03 problems faced by a country because of refugees. (6 marks)

- 06). Mineral resources can be categorized in to 3 as metal mineral, nonmetal mineral and energy minerals.
- Name 02 mineral types for each group that can be seen in Sri Lanka. (3 marks)
 - Name 04 mineral types with their 02 product which are used as industrial raw materials in Sri Lanka. (5 marks)
 - Describe 03 adverse effect of mineral on environment. (6 marks)
 - Explain 02 measures that have been taken by the Sri Lankan government for minimization the damage to environment. (6 marks)

- 07). i. Name 03 human and 03 physical factor that affect the location of manufacturing industries in the world. (3 marks)
- ii. Important cities for shipbuilding industry are marked on the following map. Name them in order. (5 marks)



- Explain briefly, 03 factors that affect the location of ship building industry. (6 marks)
- Discuss 03 modern trends in ship building industry. (6 marks)

- 08). i. Five main tourism zones in Sri Lanka are marked in the map by letters ABCDE. Name them in order. (5 marks)
- State 04 reasons for tourists to visit Sri Lanka. (4 marks)
 - Describe separately economical and social impact of tourism industry in Sri Lanka. (6 marks)
 - Explain the measures for the development of tourism industry. (5 marks)

