

## Department of Education - Western Province

### Year End Evaluation - 2013

#### Grade 8 Geography

Name/ Index No : .....

Time : 2 hours

#### Part I

❖ Answer all the questions.

● Underline the correct answer.

1. The planet known as “ The evening star , The star of dawn , and the Lamp star” is,
  1. Venus
  2. Mercury
  3. Saturn
  4. Jupiter
2. The region bounded by the Himalayan Ranges from the north , Indian Ocean in the south , Arabian sea in the west , and the Bay of Bengal from the east is known as ,
  1. African continent
  2. South Eastern Asia
  3. South Asian region
  4. European continent
3. Economical, cultural and social development of man is known as,
  1. Recurrence
  2. Attainment
  3. Social security
  4. Development
4. The most beautiful planet in the solar system which is only second to Jupiter in size is ,
  1. Uranus
  2. Mars
  3. Saturn
  4. Venus
5. The season in which the temperature rises gradually , the flowers start to bloom , and the young leaves appeared is,
  1. Autumn
  2. Spring
  3. Winter
  4. Summer

● Select the suitable word from the bracket and fill in the blanks.

(Lepcha, Sherpas, Pakistan, Bhutan, wheat, paddy, Fishing industry, Tourism)

6. The main crop grown in south Asian region is .....
7. Hindukush , Sulaiman . Bolan , Kirthar mountain ranges are located in .....
8. The tribal community living in the hilly regions of Nepal is known as .....
9. The ..... is the main source of foreign exchange in Maldives.
10. The country which has the greatest distribution of forests among the countries of South Asian Region is .....

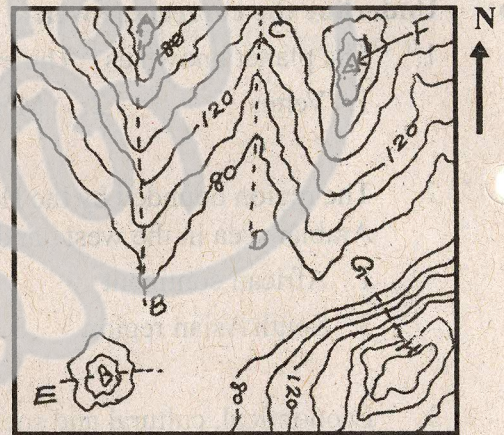
- (6). 1. Write two criterias to assess "Personal development" (2)
2. When we compared with other countries in the South Asian Region the ratio of "Infant Mortality Rate and Maternal Mortality Rate" of Sri Lanka have been reduced. Write four reasons for it. (4)
3. Mention five facilities that Sri Lankan government has provided you in order to develop your literacy.(Ability to write, read and understand a particular language). (5)
- (7). 1. Draw the conventional symbols used to show the provincial and district boundaries in 1:50000 topographical maps with their correct colours. (2)
2. Draw the conventional symbols used for the following vegetation (crops) in those maps with their correct colours.
- |                      |                        |
|----------------------|------------------------|
| A. Paddy cultivation | B. Rubber cultivation  |
| C. Home garden       | D. Coconut cultivation |
- (4)
3. Select one from the following physical features and write a short description about it.
1. Valley
  2. Conical hills
  3. Mountain ranges (5)

- From 11-15, write ( T ) if the given statement is correct and write ( F ) if not in the given bracket.

- Seasons are the result of the revolution of the Earth around the sun. ( )
- Providing free education is considered as a private service in many countries. ( )
- Red Gate and Saranath statue are diverse cultural heritages of India. ( )
- The goat is considered as sacred and divine by Indian people. ( )
- Bangladesh is very famous for Jute industry. ( )

- Study the given topographical map and answer the questions from 16-20. Select the correct answer from the words given in the brackets and underline it.

- The physical feature shown by the line A-B is,  
(A gap, A valley, A spur)
- The physical feature shown by the line C-D is,  
(A valley, A spur, A gap)
- E, indicates,  
(A mountain range, A conical hill, A plain)



- The symbol indicated by F is,  
(Height of the place, Trigonometrically station, A spur)
- The line G-H indicates a,  
(steep slope, gentle slope, valley)

( 2 x 20 = 40 )

## Part II

- ❖ Question number **one** is compulsory.
  - ❖ Write answers for **five** questions including question number one.
- (1). Answer the following questions based on the “Information file about South Asian countries” you prepared as a school based Assessment.
1. Write two advices given by your teacher to do this group activity. (2)
  2. Under which title or sub titles that your group collected information. (2)
  3. Write two sources from where you collected information for the above topics. (2)
  4. Write two materials you used to do this activity creatively. (2)
  5. Explain two illustrations you used to develop the creativity and beauty of your production. (4)
  6. Explain briefly how you and your group members work together in cooperation while doing this group activity. (4)
- (2). 1. Name the closest and furthest planets from the sun. (2)
2. a. According to the rotation of the Earth how many hours does it take to turn 360 longitudes? (2)
  - b. According to that , how many minutes does it take to rotate 15<sup>o</sup> longitudes? (4)
  3. Write a description about five sentences to emphasize.  
“ The special and unique planet in the solar system is the Earth.” (5)
- (3). 1. What is the layer that protects the Earth from Ultra Violet Rays coming from the sun.(2)
2. The atmosphere consists of four main layers. Name them. (4)
  3. Name three features of hydrosphere and explain two uses of it for us. (5)
- (4). 1. Name the capital cities of the following countries.
- A. Bangladesh .....
  - B. Pakistan .....
2. “Cultural heritages are divided into two sections as Tangible heritages and Intangible heritages.” Name two tangible heritages and two intangible heritages. (4)
3. Write a description of five sentences about the crops grown under the subsistence agriculture in South Asian Region and their special features. (5)
- (5). “Energy helps to improve the life style of the man”
1. Write two energy sources used in your home. (2)
  2. Explain in brief the uses of them. (4)
  3. a. Name the energy source is that mostly used by the Indians.
  - b. Write a short description how they produce that energy source and the uses they get from it. (5)