



WESTERN MUSIC

GRADE 9

Self – Learning Pack
(Term III)

Ministry of Education
Aesthetic Education Branch



Advisors

- Prof. K. Kapila C.K. Perera - Secretary,
Ministry of Education
- Dr. M. Upali Sedara - Secretary,
State Ministry of Education Reforms,
Open Universities and Distance Learning Promotion

Guidance

- H.U. Premathilake - Additional Secretary
Education Quality Development
Ministry of Education
- G.M. Niel Gunadasa - Additional Secretary
State Ministry of Education Reforms,
Open Universities and Distance Learning Promotion

Coordination

- Dr. Nishadh Hadunpathirana – Director,
Aesthetics Education,
Ministry of Education

Direction & Monitoring

- Ushitha A. Samarakoon – Deputy Director (Western Music)
Ministry of Education
- Thushari Liyanage - Assistant Director (Aesthetic Education)
Kurunegala Zonal Education Office

Writers

- Sammani Peramunugama - Maliyadeva Boys’ College, Kurunegala
- Teshani Wanninayake - Maliyadeva Model Maha Vidyalaya, Kurunegala
- Ferdita Tennakoon - St. Anne’s College, Kurunegala
- Iresha Jayaweera - Maliyadeva Balika Vidyalaya, Kurunegala
- Janitha Premadasa - Lakdas De Mel College, Kurunegala
- Priyanwada Jayasundara - Vishvoda National College, Kurunegala
- Neranja Eramudugolla - Mayurapada Central College, Narammala

CONTENT

- * **3.2.1** Concertos, Ballets, Overtures and Suite.
- * **5.1.1** Instruments of the Woodwind section of the orchestra.
- * **5.2.1** The mechanism of the Piano
- * **6.3.1** Ornaments used in Music - Appoggiatura, Acciaccatura, Mordant
- * **6.7.1** Form in music - Simple Rondo form
- * **6.8.1** Terms and Signs - Performs music expressively;
Dynamics, Tempo, Articulation and Mood.
- * **7.2.1** Writing rhythmic patterns of known and unknown melodies.
- * **7.2.2** Composing a melody of 4 Bars.

Competency	- 7.0	Identifies and Interprets what is heard, Creates and responds to music.
Competency Level	-7.2	Notates a melody on hearing and composes a melody.
Activity	- 7.2.2	Composing a melody of 4 Bars.

COMPOSING A MELODY

* When composing a melody, it is necessary to note the following:

- a) Is the melody meant for voice or an instrument?
- b) Its length and Key.

* A melody is made up of a succession of varied notes grouped according to a rhythm.

* If the melody is meant for singing, it must be within the range that can be sung by the singer. A melody moving smoothly without unwanted leaps in it is best for singing.

Ex: - Compose a 4 bar melody in F major, 4/4 time, by using the following rhythm patterns.



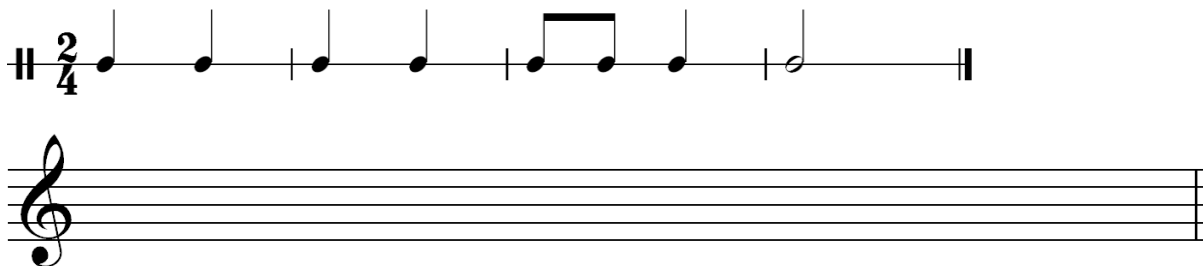
(It is best to have a long note in the last bar to suit the time.)



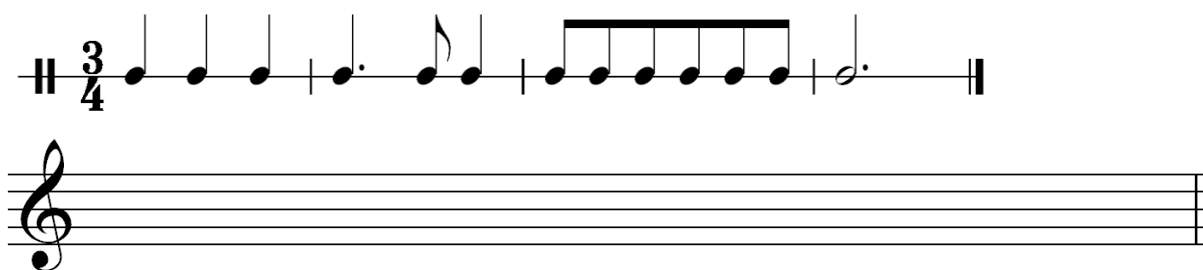
Evaluation

1) Compose melodies according to the given rhythm patterns and keys.

a) C major - 2/4 time



b) D major - 3/4 time



c) G minor - 3/8 time

