



English



Self-Learning pack

Grade 6



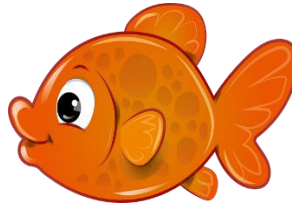
31. Determiners

A determiner is a word that introduces a noun. It always comes before a noun

Look at the underlined words. They are **determiners**.



These books



a fish



an elephant



that kite

Determiners

a
an
the

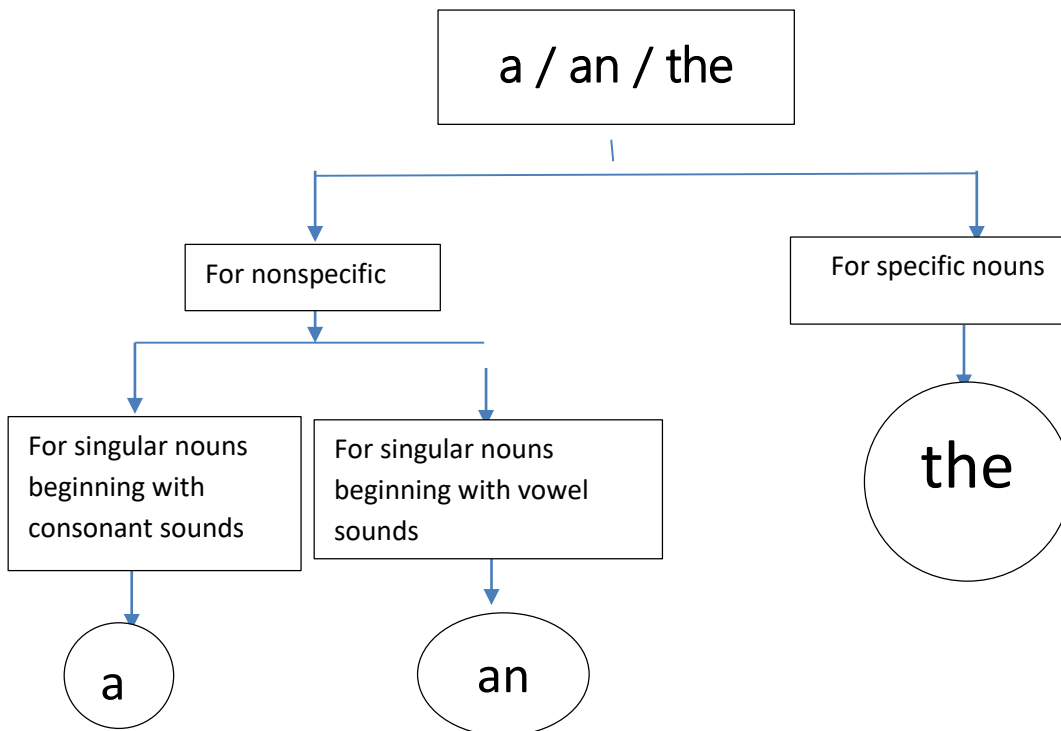
my our
your their
his its
her

this
that
these
..

one
two
three
four

first
second
third

several many
a few some
any a lot
of



Ex: -

- a child
- a book
- a table
- a duck
- a pen

Ex: -

- an ant
- an elephant
- an ice cream
- an owl
- an umbrella

The determiners “a” or “an” → used with singular nouns.



a child



an ice cream

We use “the” with both singular and plural nouns. We say the When it is clear which thing we mean.



the children



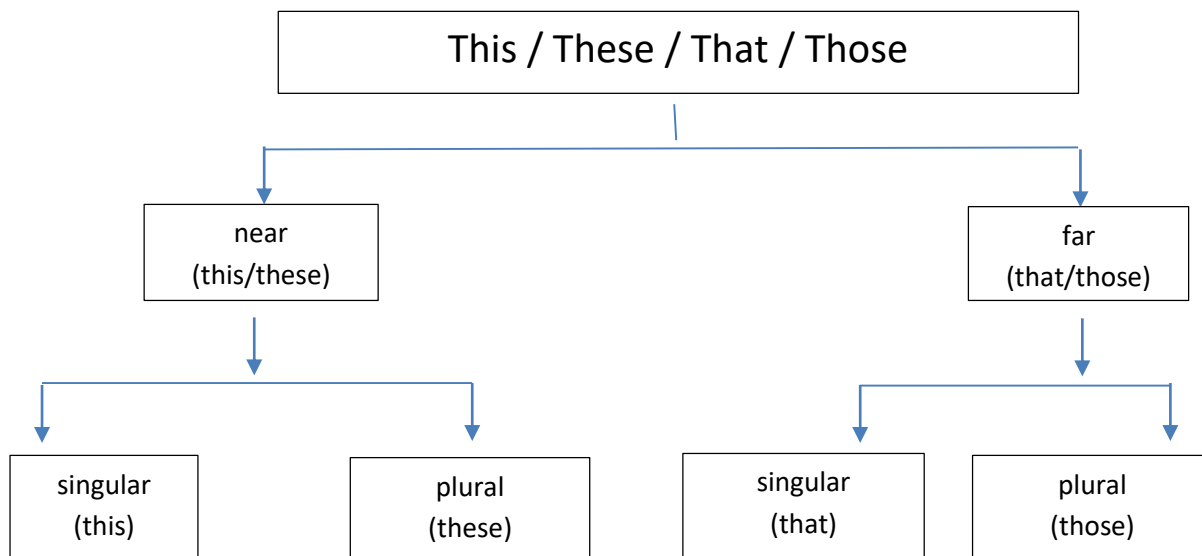
the tree



Activity 1

Fill in the blanks with a/an or the

1. I can ride a bicycle.
2. She is cutting carrot.
3.principal of the school hoists the school flag in the morning.
4. Piduruthalagala is highest mountain in Sri Lanka.
5. Kusum is very nice person.
6. I boughtink bottle.
7. My mother is writingletter.
8. I sawairplane flying in the sky.
9. What is name of this village?
10. We live in old house near station.





This cow is near the child.



That cow is far from the child.



These cows are near the child.



Those cows are far from the child.

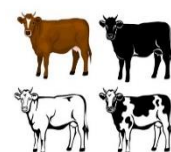
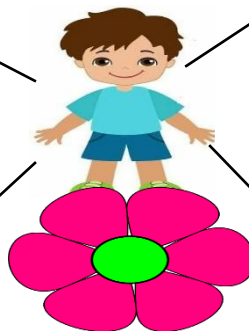
Activity 2

Look at the pictures and fill in the blanks. Use “this”, “these”, “that” or “those”

One is done for you. Arrows show the distant things.



Me



1. Those are birds.
2.are fruits.
3.is a mango.
4.are cows.
5.is a pen.
6.is a flower.
7.are kites.

Activity 4

Fill in the blanks by selecting the correct word from the given words.

1.



.....are his books. (this/that/these)

2.



.....girls are going home. (this/these/that)

3.



Hey!.....is my plane. (this/that/those)

4.



Look,are horses. (this/that/those)

5.



Isa ruler? (this/that/those)

6.



.....is a tree. (those/this/that)