



PROVINCIAL DEPARTMENT OF EDUCATION-NORTH WESTERN PROVINCE

SECOND TERM TEST - 2018

Grade 10

WESTERN MUSIC - I

One Hour.

Name / Index No. :

- Answer all questions.

01. Corresponding compound time-signature of $\frac{2}{2}$ time ?

- (1) $\frac{6}{8}$ (2) $\frac{6}{16}$ (3) $\frac{6}{4}$ (4) $\frac{4}{2}$

02. Change the position of a melody to the required pitch ?

- (1) Form (2) Ornament (3) Harmony (4) Transposition

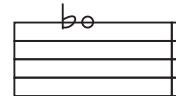
03. Composer was not born in Germany,

- (1) Ravel (2) Beethoven (3) Wagner (4) Mendelssohn

04. What is indicated by a dot above or below a note.

- (1) Play the note Short and detached (2) Play the note Smoothly
(3) Play the note with an accent (4) Adding half it's value to it's length

05. Which clef would make the given note the Dominant of A^b major ?



- (1) Treble clef (2) Alto clef
(3) Tener clef (4) Bass clef

06. Most suitable rests to complete the given bar ?



- (1) $\frac{7}{4}$ $\frac{7}{4}$ (2) $\frac{7}{4}$ $\frac{7}{4}$ $\frac{7}{4}$ (3) $\frac{7}{4}$ $\frac{7}{4}$ (4) $\frac{7}{4}$ $\frac{7}{4}$

07. Which of the following cannot be played on the Recorder ?



- (1) (2) (3) (4)

08. What happens to an interval when turned upside down ?

- (1) It remains the same
- (2) New triad is formed
- (3) New interval is formed
- (4) Non of these

09. Which of the following terms would best be used after the term Ritardando ?

- (1) A Tempo
- (2) Crescendo
- (3) Adagio
- (4) Diminuendo

10. Note rarely used now a days ?

- (1) Semi breve
- (2) Quaver
- (3) Breve
- (4) Minim

11. Correct way of playing the given Ornament.



- (1)
- (2)
- (3)
- (4)

12. Which of the following determines whether a Triad is major or minor

- (1) 1st note
- (2) 3rd note
- (3) 4th note
- (4) 5th note

13. Closely associated with Rhythm ?

- (1) Clef and key-singature
- (2) Sharps and Flats
- (3) Beats and bars
- (4) Major and minor


14. Tonic minor of C major ?

- (1) G major
- (2) A minor
- (3) C minor
- (4) C[#] minor

15. An Instrument has 7 or more Octaves ?

- (1) Flute
- (2) Piano
- (3) Violin
- (4) Non of these

16. A Note equal to two double dotted quavers ?

- (1) 
- (2) 
- (3) 
- (4) 

17. Decrescendo denotes decrease in the

- (1) Frequency
- (2) Amplitude
- (3) Vibration
- (4) Hz

18. All major and minor 2nd and 7th are called

- (1) Concords
- (2) Discords
- (3) Chords
- (4) Triads

19. Seasonal Festival bird?

- (1) Crow (2) Mynah (3) Koha (4) Magpie robin

20. 1809 - 1847 these are the years of Birth and Death of?

- (1) Bach (2) Wagner (3) Debussy (4) Mendel ssohn

21. Which of the following will lengthen a note ?

- (1) Sharp (2) Dot (3) Slur (4) Ornament

22. How many Tones are there in an interval of per 5th?

- (1) 7 (2) 6 (3) 5 (4) 3 1/2

23. Irregular note group occur in compound time ?

- (1) Triplet (2) Duplet (3) Duple (4) Triple

24. Enharmonic equivalent to the Leading note of F minor ?

- (1) E flat (2) E sharp (3) F flat (4) F sharp

25. Composer did not write an opera ?

- (1) Bach (2) Handel (3) Vardi (4) Wagner

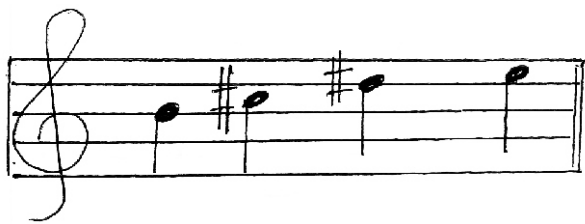
26. Drama is influenced by South Indian music ?

- (1) Baila (2) Viridu (3) Nadagam (4) Nurthi

27. Which of the following singer is least related to the others ?

- (1) Amaradeva (2) Ananda Samarakoon
(3) Nanda malini (4) M.S. Fernando

28. Which of the following scales have the notes given below in common ?



- (1) B major / Dmajor (2) B minor / C[#] minor
(3) E major / C minor (4) B major / E major

29. Which of the following is a false ?

- (1) Clarinet is a Single reed instrument.
(2) Concert master plays the viola
(3) Kettle drum is a definite pitch instrument
(4) Upright piano is a keyboard instrument

30. An instrument Originated in Southern province of Sri Lanka ?
 (1) Getaberaya (2) Bummediya (3) Yak beraya (4) Dawula
31. Bass instrument in a string quartet ?
 (1) 1st violin (2) cello (3) viola (4) Double bass
32. A note has only one other enharmonic equivalents ?
 (1) C sharp (2) F flat (3) G sharp (4) B flat
33. Associated with simple time-signature,
 (1) upper figure will be 6,9,12 (2) Beat is dotted
 (3) Beat is divisible by 2 (4) Beat is divisible by 3
34. Basic element in variation form ?
 (1) Change of Rhythm (2) Change of Dynamics
 (3) Change of Harmony (4) All of these
35. The best note to be doubled in arranging a triad for 4 voices ?
 (1) 3rd note (2) 5th note (3) Root (4) All these
36. An instrument will usually have its notation written in the G clef?
 (1) Bassoon (2) Double bass (3) Viola (4) Violin
37. Correct method to find the relative minor from a major key ?
 (1) Counting 3 notes above the key note of the major
 (2) Counting 3 semitones above the key note of the major
 (3) Counting 3 tones below the key note of the major
 (4) Counting 3 letter names which contain 3 semitone
38. Which Instrument is known as "Clown of the Orchestra" ?
 (1) Viola (2) Side drum (3) Bassoon (4) Double bass
39. Smallest distance between 2 notes ?
 (1) Tone (2) Semitone (3) Sharp (4) major 2nd
40. Another name for "festival overture"?
 (1) Peter and the wolf (2) Leonora Overture
 (3) William tell Overture (4) 1812 Overture



PROVINCIAL DEPARTMENT OF EDUCATION NORTH WESTERN PROVINCE

SECOND TERM TEST - 2018

Grade 10

WESTERN MUSIC - II

Two Hours

Name / Index No. :

No. 01 which is compulsory and 04 others.

Theme from 'Symphony No. 40' G minor K. 550

Composed by Wolfgang Amadeus Mozart

(01)

Allegro molto

Answer the following by using above

- (i) Write the Nationality and the period of the composer
- (ii) Name another composer of the same period
- (iii) What does the term "Allegro" mean ?
- Name a dynamic mark in the piece
- (iv) In which key does the music begin.
- (v) Melody begins with an Anacrusis (True / False)
- (vi) Describe the time Signature
Simple or Compound
- (vii) Give the time value of the longest note in the piece

02. Group the following notes and rests

-
- Handwritten musical notation for the first staff of the song 'The Rose Tree'. The staff is in treble clef with a key signature of one flat (B-flat) and a time signature of 6/8. The melody consists of the following notes: a quarter rest, a quarter note B-flat, an eighth note A, an eighth note G, a quarter note F, an eighth note E, an eighth note D, a quarter note C, an eighth note B-flat, an eighth note A, a quarter note G, an eighth note F, an eighth note E, a quarter note D, and a final quarter note C. The piece ends with a double bar line.

- [illegible]

-

-
- Handwritten musical notation for the first staff of 'The Rose Tree'. The staff is in treble clef with a key signature of one sharp (F#) and a time signature of 4/4. The melody consists of the following notes: a quarter note G4, a dotted half note A4, a quarter note B4, a quarter note A4, a quarter note G4, a quarter note F#4, a quarter note E4, and a quarter note D4. The staff ends with a double bar line.

-

-
- (01 mark)

-
-
-
-

-
- A musical staff in bass clef with a key signature of one sharp (F#) and a time signature of 4/4. The melody consists of the following notes: G2 (quarter), A2-B2 (eighth pair), C3 (quarter), D3 (half), E3-F#3 (eighth pair), G3-A3 (eighth pair), B3-C4 (eighth pair), D4-E4 (eighth pair), F#4-G4 (eighth pair), A4-B4 (eighth pair), C5-D5 (eighth pair), E5-F#5 (eighth pair), G5-A5 (eighth pair), B5-C6 (eighth pair), D6-E6 (eighth pair), F#6-G7 (eighth pair), A7-B7 (eighth pair), C8 (quarter).

(6x1/2=3)

04. Rewrite the following in open score.

(3x4=12)

05. (i) Write the following cadences

(i) Perfect cadence in G minor with key-signature

(ii) Imperfect cadence in B major without key-signature

(3x2=6)

(ii) Describe what would be the inversion of the following interval.

(2)

(iii) Re-write the following passage correcting all errors.

(1/2x8=4)

06. (i) Answer 4 of the following

Give the opposite term of the given words.

- a) Accelerando -
- b) Definite pitch -
- c) Pianissimo -
- d) Forte -
- e) Decrescendo -

(4 x 1/2=2)

(ii) Describe these triads



Key

Scale degree

Position (3x2=6)

(iii) Categorize the following forms.

Three blind mice, Harmonious Black Smith, Fur Elise, Home on the Range, Humoresque
Ah vous diraj Je maman, Ash Grove, Air for mozart.

	Binary form	Ternary form	Rondo form	Variation form
i)				
ii)				
iii)				

(1/2x8=4)

07. Answer any 6 of the following.

(i) Name 2 different types of works by Beethoven.

i) Symphony

ii) Piano sonata

iii) Opera

(ii) Name wood wind instruments that

a) Transposing and single reed

b) Non transposing and reed less

(iii) Name musical instruments used during the Baroque period ?

a) b)

(iv) Name the composers who was know as

a) Father of the string Quartet

b) Prince of concertos

(v) Name these as Calypso song, old favorites, Rounds or Musical.

a) Banana boat song

b) Softly sings the donkey

(vi) Name 2 kinds of Sri Lanka Folk songs

a)

b)

(vii) a) Name composer who associated with the Ballet ?

b) What was his Nationality

(6 x 2 = 12)

Grade 10

ANSWER PAPER




Western Music 1/2

Paper - I

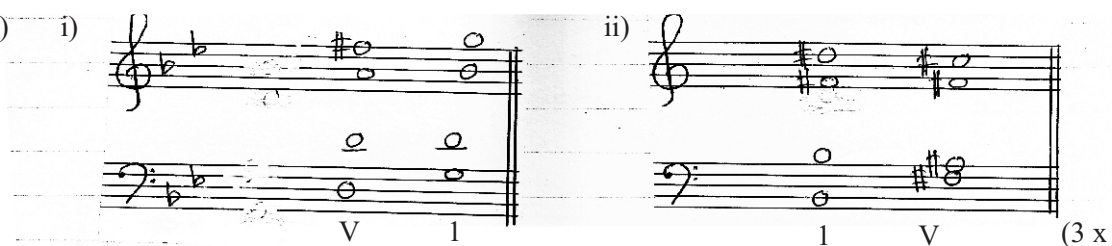
1 -(3) 2 -(4) 3 -(1) 4 -(1) 5 -(3) 6 -(3) 7 -(2) 8 -(3) 9 -(1) 10 -(3)
 11-(4) 12 -(2) 13 -(3) 14 -(3) 15 -(2) 16 -(1) 17 -(2) 18 -(2) 19 -(3) 20 -(4)
 21-(2) 22 -(4) 23 -(2) 24 -(3) 25 -(1) 26 -(3) 27 -(4) 28 -(4) 29 -(2) 30 -(3)
 31-(2) 32 -(3) 33 -(3) 34 -(4) 35 -(3) 36 -(4) 37 -(4) 38 -(1) 39 -(2) 40 -(4)

01. (i) Austrian, Classical (ii) Haydn, Beethoven (Marks 01x40=40)
 (iii) Fast P or f (iv) B^b major
 (v) true (vi) simple
 (vii) Semi breve (viii) G
 (ix) (a) Rhythm, key, Dynamics (b) Pitch. (1 x 12 = 12)

02. (i) 
 (ii) 
 (ii) 
 (iv)  (3 x 4 = 12)

03. (i)  (03 marks)
 (ii) a) E major (01 mark)
 b)  (05 marks)
 (iii)  (06 x 1/2 = 3 marks)

04.  (3 x 4 = 12)

05. (i) i)  (3 x 2 = 6)

(ii) Unison(02 marks)

(iii)