

2

Nature of the Land in the Immediate Surroundings of the House

The building in which you live with your parents and other family members is called the house. Most probably, your house may be located in an urban, estate or a rural environment with physical features such as highlands, coastal belts, plains or lowlands, slopes, rivers and forests.

The objective of this chapter is to study the nature of the land, plant and animal diversity and the activities of the community in the immediate surroundings of your house.

Observe the houses located in different environments in figure 2.1.



Figure 2.1
Houses located in different environments

Activities

Study the figure 2.1 and do the following activity.

- Match the number of the picture with the caption given below and write the correct number in the relevant box provided.

- The house located in a rural environment.
- The house located in a coastal environment.
- The house located in an estate environment.
- The house located on a highland.
- The house located on a plain.
- The house located on a slope.
- The house located in an urban environment.
- The house located in a slightly hilly land.

- Write the features of the lands in which those houses are located and write the advantages and the disadvantages of those features in the following grid.

Nature of the land in which the houses are located	Features	Advantages	Disadvantages

- Observe the nature of the immediate surroundings of your house and mention the features you see.

Assignments

- Select a group of students from your class. Find information about the nature of the land of the immediate surroundings of their houses and identify the variety of lands.

Name	Plains	Coastal areas	Highlands	Areas with slopes
Kamal				

- Discuss the advantages and the disadvantages of living in such an environment and present them to the class.

Wherever your house is located, it is your duty and responsibility to protect the land. Even when beautifying the environment around the house, it should be done carefully. The land should not be misused.

Plant and Animal Diversity

Due to plant and animal diversity, different environments are created in the immediate surroundings of the house. Diverse kinds of plants and animals exist in various eco-systems in Sri Lanka because of the nature of the land and climatic conditions. Plants are very useful for the existence of the living beings. If you are living in a rural environment, you may find plants in abundance. Eventhough you live in an urban environment, you can beautify the immediate surroundings of your house by growing plants. When selecting plants, you should consider not only their beauty but also whether they are suitable for the environment and the health of the man.

The species of animals that live facing the challenges of the hot sun, rain, threats from enemies and diseases are also a part of our environment. Animal community is also important for the existence of man.

You may have noticed some special kinds of birds in the environment of your house during certain periods of the year. Some species of birds are found only in a particular period. The singing of the koha bird or the Asian koel during the season of the Sinhala and Tamil New Year is familiar to you.

Sometimes, we see some birds migrating to our country during the winter season as they are unable to bear the coldness there. Those birds are migrant birds. Indian Pitta, Paradise fly catcher (*Sudu Redi Hora*) and *Sivuru Hora* are examples for migrant birds.



Figure 2.2
Migrant Birds

Figure 2.3 shows the benefits we gain from plants and animals and their different effects on the environment.

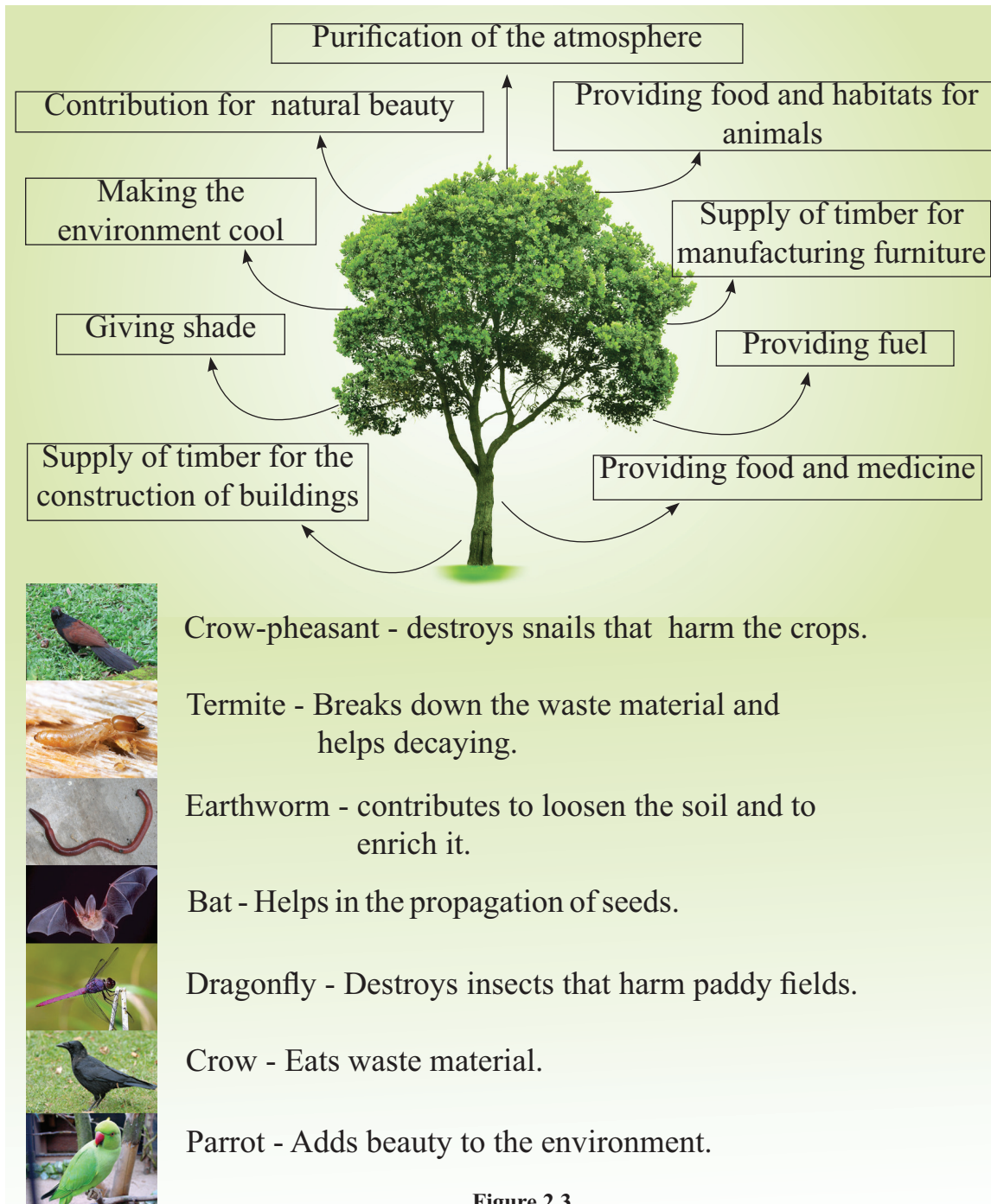


Figure 2.3
Effects and uses of plants and animals in the environment

Activities

- Enter the names of animals and plants you find in the immediate surroundings of your house in the following table.

Animals	Plants

- Put a '√' in the relevant cage in the following table to identify the uses of the above plants. Several uses can also be obtained from the same plant.

Uses of plants					
Kind of plant	Food	Medicine	Making furniture	Ornaments	Other

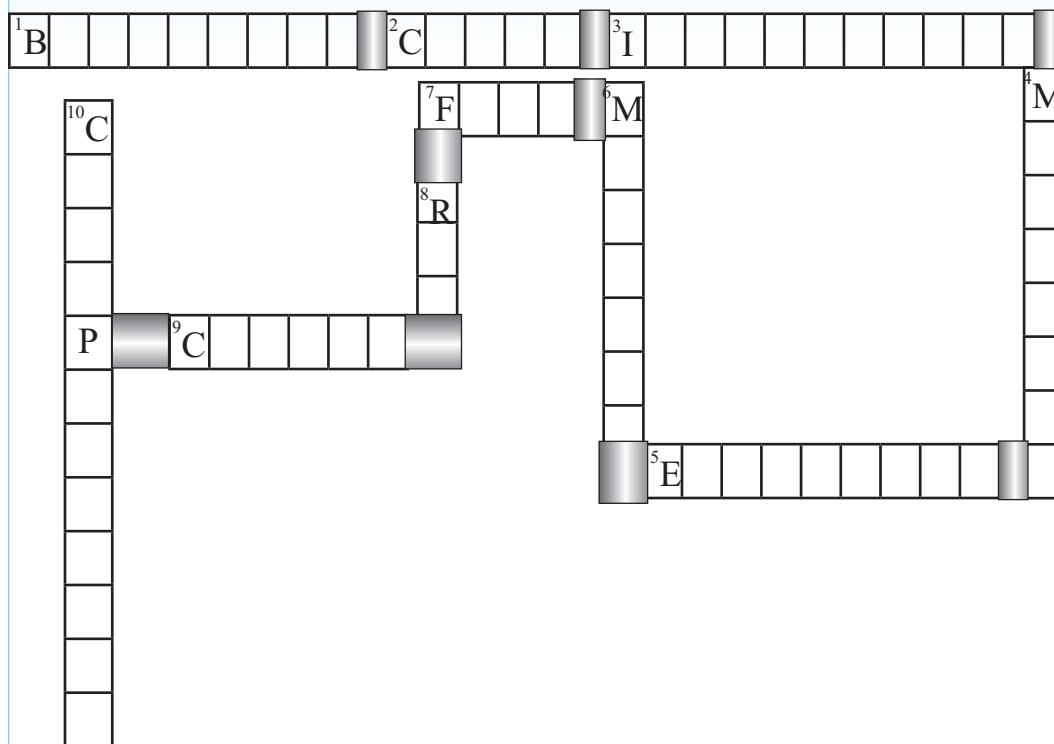
- Write three uses that man, animal and the environment can obtain from each plants.
- Classify the animals you find in these pictures, under the categories given in the following table.



1. Insects that help pollination.	
2. Animals that spread diseases to man.	
3. Nocturnal animals.	
4. Poisonous reptiles that harm the man.	

5. Complete the cross-word puzzle with the help of the clues given.

1. Beautify the environment.
2. A poisonous snake.
3. A migratory bird.
4. Spreads diseases such as Dengue and Malaria.
5. Helps soil conservation.
6. A reptile that is protected by law.
7. Forecasts the weather.
8. Spreads a disease called plague.
9. Helps paddy cultivation and brings an income to the house hold.
10. Destroys snails that harm the crops.



Assignment

1. Contribute to protect the environment by growing plants in the immediate surroundings of your school/ house.
2. Take steps to grow various kinds of plants in your home garden or in the school garden on special days like your birthday, New Year day or on the National Tree Planting Day.

Human Activities in the Immediate Surroundings of Your School / House

Identification of the Community in the Immediate Surroundings of Your School /House

There may be families in your community that belong to various ethnic groups and religious groups. They may be Sinhala, Tamil, Muslim, Burgher or Malay. They may follow different religions such as Buddhism, Hinduism, Catholicism and Islam. There are traditions and rituals linked to those ethnic and religious groups. Although there are many differences, they are your neighbours. Therefore,

we should learn to live with them in co-operation. An example is, working with unity in sports activities, in various associations and in welfare activities without considering the ethnicity and the religion.



Figure 2.4
Various religious symbols and religious institutions

Activities

1. Study figure 2.4 and identify the religions shown in those pictures. Complete the following table including the festivals related to those religions.

Religions	Religious festivals
Ex. Buddhism	Wesak, Poson

2. Mention the ethnic groups in the area where your home is located and their religions.
3. Give three examples to show that you work in co-operation with your neighbours during national and religious festivals.
4. Name three associations or clubs established for the development of the community in your area. Mention two activities done by each.
5. Draw a picture of an occasion where the communities of your area work together to develop the area.

Assignment

Draw a picture depicting festivals of ethnic and religious groups and display it in your classroom.

Economic Activities of the People in the Immediate Surroundings of Your School

Economic activities of the area depend on the resources found in the area. Among them agricultural, industrial and service sectors play a major role.

Agricultural Activities

Fishing industry, livestock farming and cultivation of crops are carried out under land utilization in different parts of Sri Lanka. Various parts of our country consist of different topographical and climatic features. Accordingly, specific agricultural activities are conducted in those areas. See figure 2.5.



People in your area may have cultivated various crops according to the nature of the land. For example, cultivation of coconut on the plains, paddy cultivation in river valleys, tea and rubber cultivation in hilly areas.

If your area is located close to a sea, a river, a reservoir or a tank, fisheries industry may be the main occupation of people. Similarly, there may be some people who engage in livestock farming like rearing of cattle, pigs or poultry as their occupation.

Activity

Name the crops cultivated in the immediate surroundings of your school/ home and the animals reared for livestock farming.

Assignment

1. Write the names of the cultivated crops and the crops that can be cultivated in your home garden and school garden in the following table.

	Grains	Yams	Vegetables	Fruits	Other
Cultivated Crops					
Crops that can be cultivated					

2. Write three instances where you can contribute to the cultivation of crops in your home garden or your school garden.

Industrial Activities

Apart from the agricultural industry, there may be industries which use raw materials found in your area. For example, the furniture available in your home may be the products of the timber found in the immediate surroundings of your home. There could also be pots, tiles

and bricks made using clay and flower pots and bricks produced using cement.



Figure 2.6
Industries based on resources found in the area

In most of the areas, various industries are carried out using the natural resources found in that area. Small scale domestic industries are also spread all over Sri Lanka. Production of sweet meats, products related to rice flour, sewing garments and coir products are examples for those industries.

Table 2.1
Industries based on traditional technological skills

Industry	Area
Furniture	Moratuwa
Masks	Ambalangoda
Brassware	Pilimathalawa
Cane products	Radawadunna
Mats	Dumbara

There are places which are famous for industries based on traditional technological skills in our country. See Table 2.1.



Map 2.1
Location of several industries based on traditional technological skills

Activities

1. Name three industries established in your area. Mention the benefits your area has received from them.
2. Using the information given in Table.2.2, prepare your own table to indicate the location of each industry according to the area, district and the province.

Table 2.2			
Industry	Area	Province	District
Masks Brassware Mats Tiles and Bricks	Pilimathalawa Ambalangoda Bangadeniya Dumbara	Southern Central North Western	Galle Kandy Puttalam

Assignment

Complete the following table with the industries that can be conducted based on the natural resources available in your area.

Natural resources	Industry

Services

Among the economic activities found in the immediate surroundings of your school and home, services are also important. If a particular institution provides services for human needs, it is a service. There are services such as Health, Education, Postal, Transport, Banking and Security in your area as well as in other areas.

Some of these services are provided by the government free of charge and some are provided by the private sector.

There are services provided by the government at a concessionary price too. Issuing season tickets in transportation and providing medicines at a concessionary price at 'Osu Sala' are examples. Several such services are shown in figure 2.7.



Figure 2.7
Various services

These services are important for the people in the area to maintain their day to day living.

Some people in your area may be engaged in providing these services. If they are engaged in agricultural, industrial sectors or providing a service utilizing their manual labour, they render a great social service. Similarly, people who engage in various professions contribute in whatever way to build the society.

Activities

1. Write down different services you find in your area and mention two activities carried out by each of them.
2. Write three services you enjoy as a school student.
3. Write down your duties towards the country when you benefit from those services.

Glossary

• Environment	- பரீசரய	- சூழல்
• Nature of the land	- ஐதீயே ஸீவலாவய	- நிலத்தின் இயல்பு
• Observation	- திரீக்ஷணய	- அவதானித்தல்
• Human environment	- லாதுஷ பரீசரய	- மனித சூழல்
• Physical environment	- ஸீயதீக பரீசரய	- பௌதீகச் சூழல்
• Plant diversity	- லாக விவிதன்வய	- தாவர பல்வகைமை
• Animal diversity	- ஸதன்வ விவிதன்வய	- விலங்குப் பல்வகைமை
• Community	- ப்ரஸாவ	- சமூகம்
• Coastal belt	- வரல தீர	- கரையோரம்
• Plains	- துதீதலா	- சமவெளி
• Slopes	- லுதுதீ	- சாய்வுகள்
• Mountainous lands	- துதூகர தீதீ	- உயர் நிலம்
• System	- பதீததீய	- தொகுதி
• Climatic effects	- தீதீதூதீக லலபதீதீ	- காலநிலைத் தாக்கங்கள்
• Organisms	- தீவீதீ	- அங்கி
• Rural environment	- ஸ்ராதீய பரீசரய	- கிராமச் சூழல்
• Urban environment	- தாஸரீக பரீசரய	- நகரச் சூழல்
• Animal community	- ஸதன்வ ப்ரஸாவ	- விலங்குச் சமூகம்
• Migrant birds	- ஸலாரக பதீதீதீ	- இடம்பெயர் பறவைகள்
• Birds species	- துதூலூ விதீதீ	- பறவைகளின் இனங்கள்
• Atmosphere	- வாதூஸோஸ	- வளிமண்டலம்
• Waste	- தபதூவ	- கழிவு
• Seeds	- தீத / தீல	- விதை
• Insects	- தாதீதீ	- பூச்சிகள்
• Pollination	- பராதணய	- மகரந்தம்
• Reptiles	- ஸரததீதீ	- ஊர்வன
• Natural beauty	- ஸீவாலதீக ஸீயதீதீரீயய	- இயற்கை அழகு
• Soil conservation	- பாலூ ஸரக்ஷணய	- மட்பாதுகாப்பு
• Coexistence	- ஸததீவதய	- சக ஜீவனம்

• Ethnic group	- ජනවර්ග	- இனப்பிரிவு
• Occupation	- ජීවනෝපාය	- தொழில்
• Economic activities	- ආර්ථික කටයුතු	- பொருளாதார நடவடிக்கைகள்
• Agricultural activities	- කෘෂිකාර්මික කටයුතු	- விவசாய நடவடிக்கைகள்
• River valley	- ගං මිටියාවත	- நதிப் பள்ளத்தாக்கு
• Wet zone	- තෙත් කලාපය	- ஈரவலயம்
• Dry zone	- වියළි කලාපය	- உலர் வலயம்
• Intermediate zone	- අතරමැදි කලාපය	- இடைவலயம்
• Informal	- අවිධිමත්	- முறைசாராத
• Raw materials	- අමුද්‍රව්‍ය	- மூலப்பொருட்கள்
• Technological skills	- ශිල්ප ශ්‍රේණිය	- கலைஞானம் தொழில்நுட்பம்